

Concealed wall-mounted single-lever mixer mixer on right -

35 816 970 90



- 2x female thread 1/2" connections
- 2x 1/2" x 1000mm high pressure hose
- 1x female thread 1/2" outlet for wall spout
- cartridge
- gauge 100 mm
- lead-free

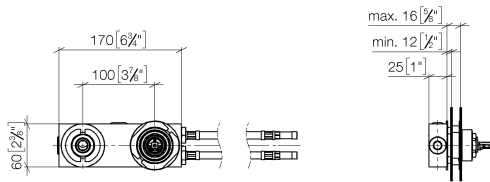
Recommended combination for this fitting:Rear walls with- wall thickness: 12-16 mm- spout hole diameter: 40 mm- mixer hole diameter: 58 mm- clear width behind wall: 25 mm

NOTE:Not suitable for concealed installation.Connection by means of angle valves, mounted with screws to back wall.

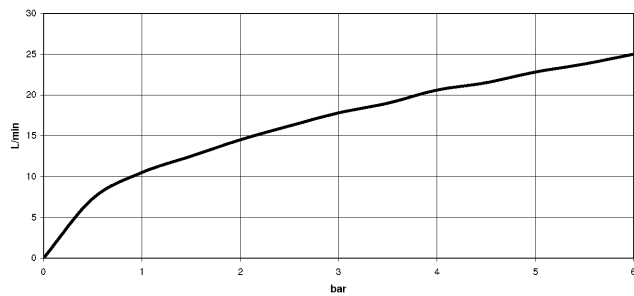
Concealed wall-mounted single-lever mixer mixer on right -

35 816 970 90

mm [inches]



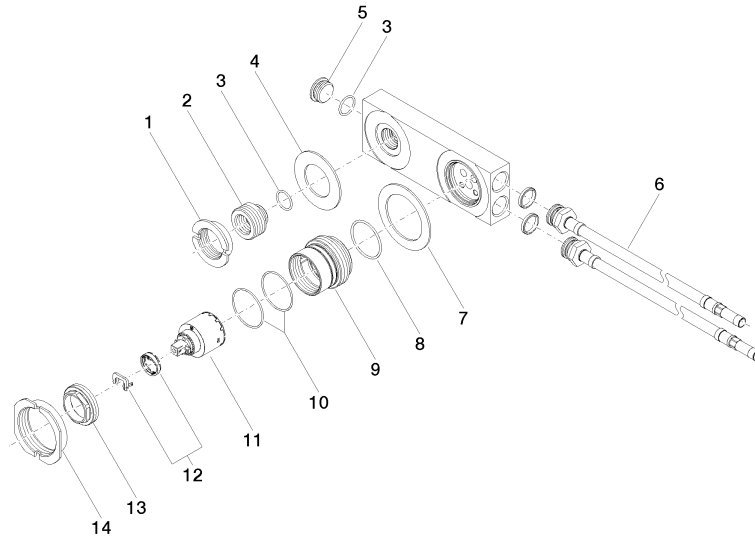
Flow rate chart



Concealed wall-mounted single-lever mixer mixer on right -

35 816 970 90

Product version from 3/16/2015





Concealed wall-mounted single-lever mixer mixer on right -

35 816 970 90

Spare parts list

Product version from 3/16/2015

| No. | Item Number | Name | Quantity used | Delivery time |
|-----|-----------------|------|---------------|---------------|
| | 09 23 10 019-07 | nut | 17 | 30 |