

**Bath cascade spout for wall mounting - Champagne (22kt Gold)**

MEM

13 430 740



- 200mm projection
- cascade
- plate 180 mm x 60 mm
- hole diameter 40 mm
- 1/2" connection
- plug-link mounting
- max. flow 26.5 l/min at 3 bar flow pressure
- WRAS 240502013, 1809017

	Champagne (22kt Gold)	13 430 740-47
	Chrome	13 430 740-00
	Brushed Platinum	13 430 740-06
	Platinum	13 430 740-08
	Dark Chrome	13 430 740-19
	Brushed Durabronze (23kt Gold)	13 430 740-28
	Matte Black	13 430 740-33
	Brushed Champagne (22kt Gold)	13 430 740-46
	Brushed Dark Platinum	13 430 740-99

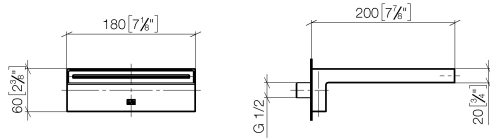
**Recommended miscellaneous**



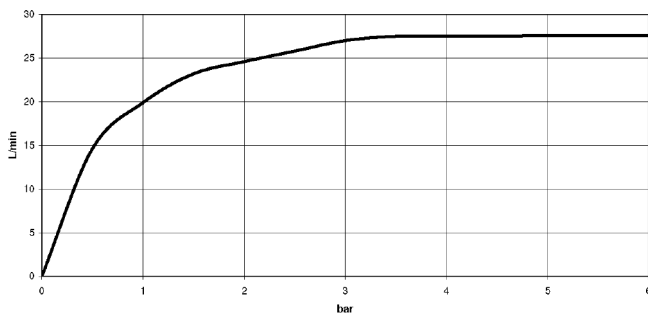
- Concealed wall elbow -** 35 085 970 90
- max. recess depth 163 mm
  - min. recess depth 90 mm

13 430 740

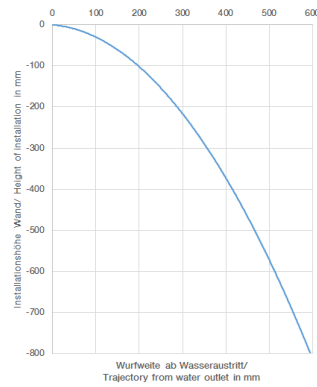
mm [inches]



**Flow rate chart**



**Trajectory diagram**



**Codes & Standards**

Scottish Water  
Byelaws

UK Water Supply  
Regulations



Bath cascade spout for wall mounting - Champagne (22kt Gold)

---

MEM

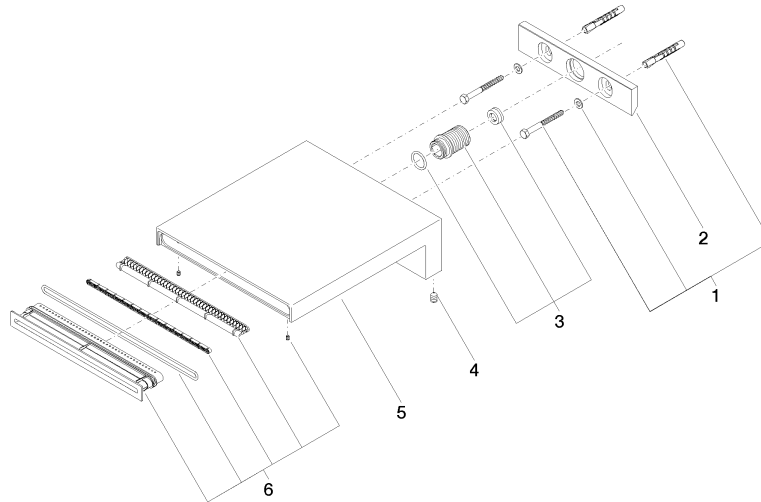
13 430 740

Certificates

---

WRAS\_240502

13 430 740





## Bath cascade spout for wall mounting - Champagne (22kt Gold)

MEM

13 430 740

### Spare parts list

No.	Item Number	Name	Quantity used	Delivery time
	04 30 31 014 00 90	fixing set	7	2