



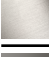



**CL.1 Wall-mounted basin spout without pop-up waste - Brushed Dark Platinum**

CL.1

13 800 705



- 200mm projection
- fixed spout
- rectangular spray pattern with 40 individual jets
- hole diameter 37 mm
- lead-free
- 1/2" connection
- plug-link mounting
- max. flow 4.5 l/min
- This product can help a building meet the requirements of Green Building Rating Systems, e.g. LEED®, BREEAM®, DGNB
- WRAS 1512013

	Brushed Dark Platinum	13 800 705-99
	Chrome	13 800 705-00
	Brushed Platinum	13 800 705-06
	Dark Chrome	13 800 705-19
	Brushed Champagne (22kt Gold)	13 800 705-46
	Champagne (22kt Gold)	13 800 705-47

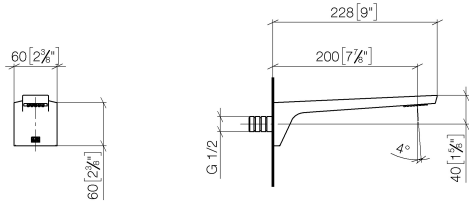
**Recommended miscellaneous**



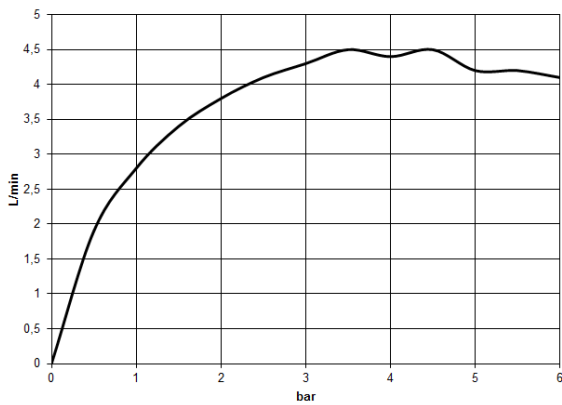
- Concealed wall elbow -** 35 085 970 90
- max. recess depth 163 mm
  - min. recess depth 90 mm

13 800 705

mm [inches]



**Flow rate chart**



**Codes & Standards**

DIN 4109

EPA WaterSense

ISO 3822

NSF372

NSF61

Scottish Water  
Byelaws

UK Water Supply  
Regulations

Ü-Zeichen

WaterSense





CL.1 Wall-mounted basin spout without pop-up waste - Brushed Dark Platinum

---

CL.1

13 800 705

Certificates

---

IAPMO\_N-4

IAPMO\_8834

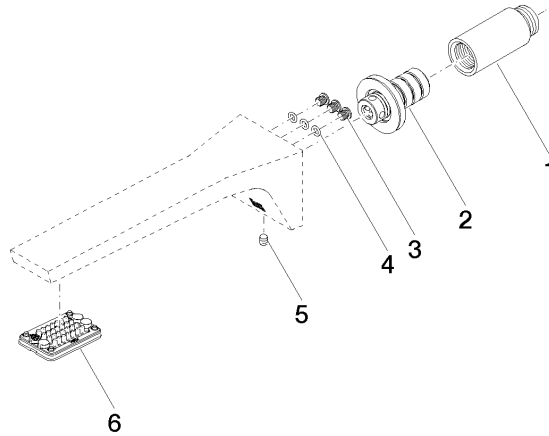
LGA\_28

IAPMO\_6

WRAS\_1512

13 800 705

**Product version from 3/9/2015**





CL.1 Wall-mounted basin spout without pop-up waste - Brushed Dark Platinum

CL.1

13 800 705

**Spare parts list**

**Product version from 3/9/2015**

No.	Item Number	Name	Quantity used	Delivery time
	09 24 03 081 10 90	extension	10	2