

TARA Deck valve clockwise closing - Matte Black

TARA

20 000 882

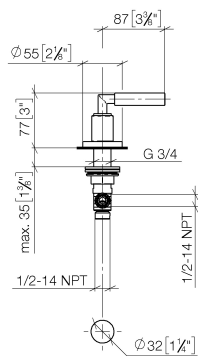


- hole diameter 32 mm
- rosette Ø 55 mm
- WRAS

	Matte Black	20 000 882-33
	Dark Chrome	20 000 882-19
	Brushed Dark Brass	20 000 882-39
	Brushed Bronze	20 000 882-42
	Brushed Champagne (22kt Gold)	20 000 882-46
	Champagne (22kt Gold)	20 000 882-47

20 000 882

mm [inches]



Flow rate chart



Codes & Standards

ASME A112.18.1	cUPC	Scottish Water Byelaws	UK Water Supply Regulations
----------------	------	------------------------	-----------------------------



## TARA Deck valve clockwise closing - Matte Black

---

TARA

20 000 882

Certificates and sustainability

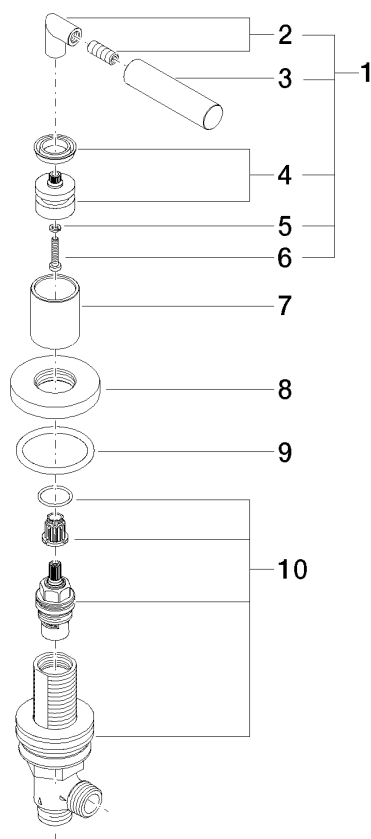
---

WRAS\_2112

IAPMO\_4976

20 000 882

Parts for other  
finishes can be found  
here: Dark Chrome



## Spare parts list

No.	Item Number	Name	Quantity used	Delivery time
3	09 20 88 052-33	handle	1.00	30
7	09 21 02 140-33	sleeve	1.00	30
4	90 12 12 007 00-33	base	1.00	30
1	04 20 88 052 00-33	handle	1.00	30
8	09 27 89 105-33	rosette	1.00	30
2	04 18 20 022 00-33	angle	1.00	30
10	90 17 11 040 31 90	side panel	1.00	2
6	90 30 30 075 00 90	screw	1.00	2
9	90 14 10 043 00 90	seal	1.00	2
5	90 30 11 029 00 90	disc	1.00	2