


TARA Deck valve anti-clockwise closing - Brushed Platinum

TARA

20 000 883

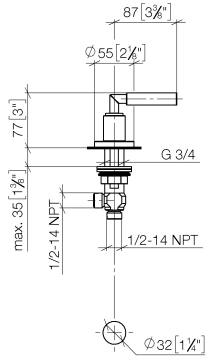


- hole diameter 32 mm
- rosette Ø 55 mm
- WRAS 2112061

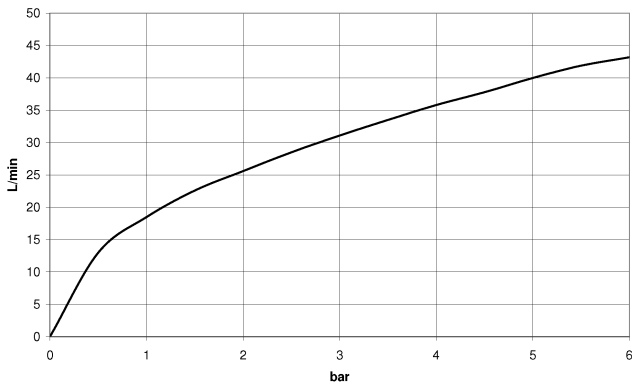
	Brushed Platinum	20 000 883-06
	Brushed Bronze	20 000 883-42
	Brushed Champagne (22kt Gold)	20 000 883-46
	Champagne (22kt Gold)	20 000 883-47

20 000 883

mm [inches]



Flow rate chart



Codes & Standards

ASME A112.18.1

cUPC

Scottish Water
Byelaws

UK Water Supply
Regulations



TARA Deck valve anti-clockwise closing - Brushed Platinum

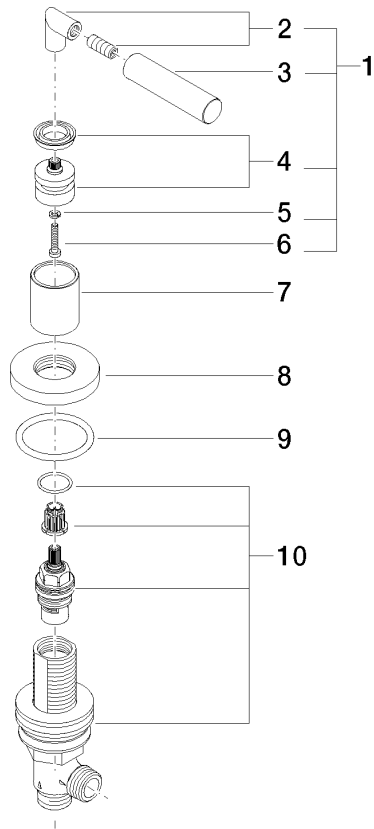
TARA

20 000 883

Certificates

IAPMO_4976

WRAS_2112





TARA Deck valve anti-clockwise closing - Brushed Platinum

TARA

20 000 883

Spare parts list

No.	Item Number	Name	Quantity used	Delivery time
	04 20 88 052 00-06	handle	10	10