

**TARA Deck valve clockwise closing cold or hot - Brushed Champagne (22kt Gold)**

TARA

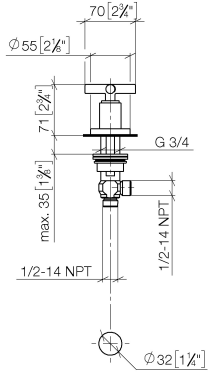
20 000 892



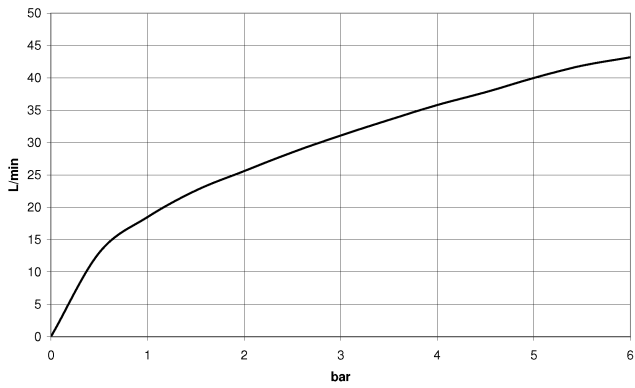
- hole diameter 32 mm
- rosette Ø 55 mm
- WRAS 2112061

	Brushed Champagne (22kt Gold)	20 000 892-46
	Chrome	20 000 892-00
	Brushed Platinum	20 000 892-06
	Platinum	20 000 892-08
	Dark Chrome	20 000 892-19
	Brushed Durabronze (23kt Gold)	20 000 892-28
	Matte Black	20 000 892-33
	Brushed Bronze	20 000 892-42
	Champagne (22kt Gold)	20 000 892-47
	Brushed Chrome	20 000 892-93
	Brushed Dark Platinum	20 000 892-99

20 000 892  
mm [inches]



**Flow rate chart**



**Codes & Standards**

Scottish Water  
Byelaws

UK Water Supply  
Regulations



TARA Deck valve clockwise closing cold or hot - Brushed Champagne (22kt Gold)

TARA

---

20 000 892

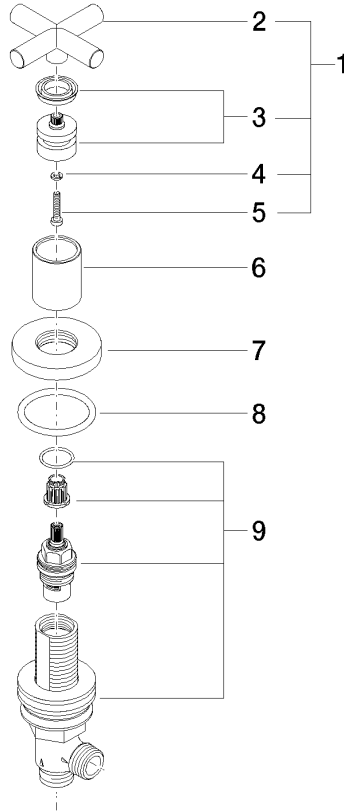
Certificates

---

WRAS\_2112

20 000 892

Parts for other finishes can be found here: [Chrome](#)





TARA Deck valve clockwise closing cold or hot - Brushed Champagne (22kt Gold)

TARA

20 000 892

### Spare parts list

No.	Item Number	Name	Quantity used	Delivery time
	90 20 89 010 10-46	handle	9	30