

## TARA Single-hole basin mixer with pop-up waste - Champagne (22kt Gold)



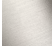
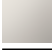




TARA

22 513 892 Product version from 5/27/2021



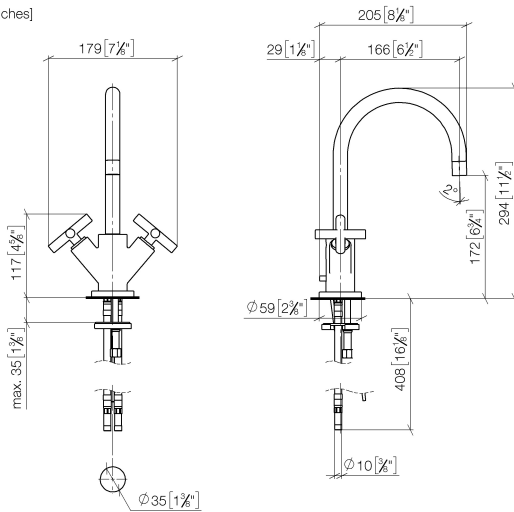
- 165mm projection
- pivotable spout 360°
- circular, air-enriched flow
- height of mixer 295 mm
- height up to aerator 172 mm
- hole diameter 35 mm
- rosette Ø 59 mm
- 2x screw-in M 10 x 1 pressure hose, leak-tested
- max. flow 7 l/min
- lead-free
- This product can help a building meet the requirements of Green Building Rating Systems, e.g. LEED®, BREEAM®, DGNB
- WRAS

Only suitable for basins with an overflow.

|   |                                |               |
|---|--------------------------------|---------------|
|    | Champagne (22kt Gold)          | 22 513 892-47 |
|    | Chrome                         | 22 513 892-00 |
|    | Brushed Platinum               | 22 513 892-06 |
|    | Platinum                       | 22 513 892-08 |
|    | Dark Chrome                    | 22 513 892-19 |
|    | Brushed Durabronze (23kt Gold) | 22 513 892-28 |
|    | Matte Black                    | 22 513 892-33 |
|    | Brushed Dark Brass             | 22 513 892-39 |
|    | Brushed Bronze                 | 22 513 892-42 |
|   | Brushed Champagne (22kt Gold)  | 22 513 892-46 |
|  | Brushed Chrome                 | 22 513 892-93 |
|  | Brushed Dark Platinum          | 22 513 892-99 |

22 513 892 Product version from 5/27/2021

mm [inches]



### Flow rate chart



### Codes & Standards

|                           |                                |                             |            |
|---------------------------|--------------------------------|-----------------------------|------------|
| DIN 4109                  | EN 200                         | Executive Order<br>no. 1007 | ISO 3822   |
| Scottish Water<br>Byelaws | UK Water Supply<br>Regulations | Ü-Zeichen                   | VA-Zeichen |



TARA Single-hole basin mixer with pop-up waste - Champagne (22kt Gold)

TARA

22 513 892    Product version from 5/27/2021

Certificates and sustainability

|        |        |          |             |
|--------|--------|----------|-------------|
| ETA_18 | LGA_18 | GDV_0400 | WRAS_240702 |
|--------|--------|----------|-------------|

22 513 892 Product version from 5/27/2021

Parts for other  
finishes can be found  
here: [Chrome](#)

