

TARA Angle valve - Brushed Platinum

TARA

22 900 892 Product version up to 5/27/2021

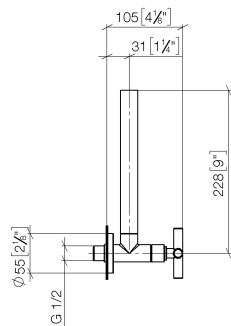


- rosette Ø 55 mm
- hose covering 200mm, for shortening

	Brushed Platinum	22 900 892-06
	Chrome	22 900 892-00
	Platinum	22 900 892-08
	Dark Chrome	22 900 892-19
	Brushed Durabronze (23kt Gold)	22 900 892-28
	Matte Black	22 900 892-33
	Brushed Dark Brass	22 900 892-39
	Brushed Bronze	22 900 892-42
	Brushed Champagne (22kt Gold)	22 900 892-46
	Champagne (22kt Gold)	22 900 892-47
	Brushed Dark Platinum	22 900 892-99

22 900 892 Product version up to 5/27/2021

mm [inches]



Flow rate chart

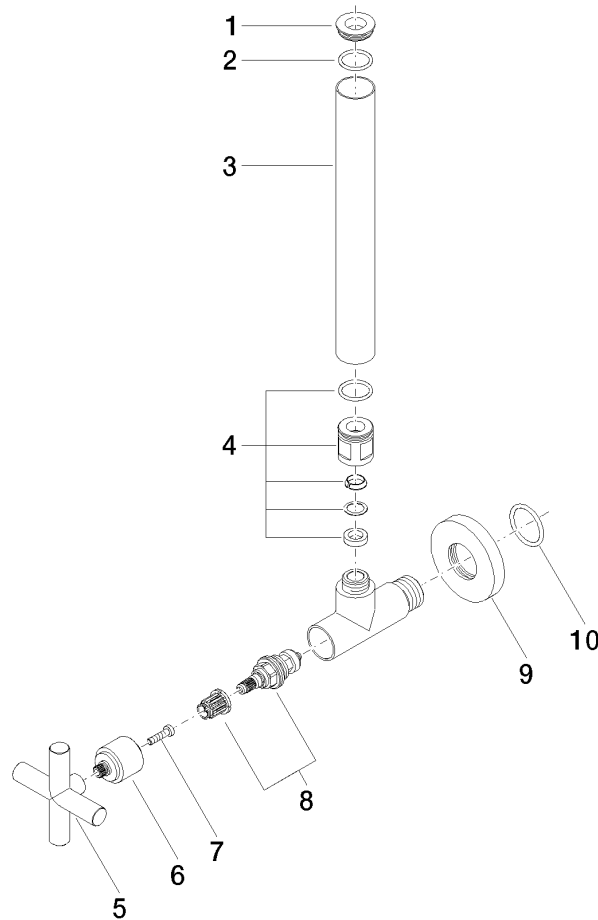


TARA Angle valve - Brushed Platinum

TARA

22 900 892 Product version up to 5/27/2021

Parts for other
finishes can be found
here: [Chrome](#)



Spare parts list

No.	Item Number	Name	Quantity used	Delivery time
1	09 21 22 000-06	nipple	1.00	10
7	09 30 30 069 90	screw	1.00	2
6	09 12 12 041-06	base	1.00	10
4	04 24 04 220 01-06	threaded connector	1.00	-
Spare part can no longer be ordered, please order the replacement item				
8	90 90 03 006 00 90	top	1.00	2
5	09 20 89 010-06	handle	1.00	60
10	09 14 10 093 90	seal	1.00	2
9	09 27 22 015-06	rosette	1.00	10
3	09 28 22 020-06	pipe	1.00	10
2	90 14 10 010 00 90	seal	1.00	2