

Hand shower set for bath rim or tile edge installation - Brushed Dark Brass

SERIES SPECIFIC

27 702 979 Product version from 5/15/2020



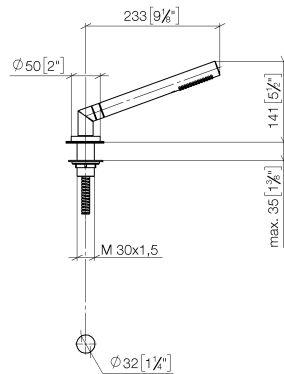
- COMPACT RAIN, max. flow rate 6.8 l/min (at 3 bar)
- with anti-scale system
- rosette Ø 50 mm
- hole diameter 32 mm
- metal shower hose 1750mm with integrated anti-twist protection
- WRAS

Two-piece design allows hose to later be changed without dismantling the fitting.

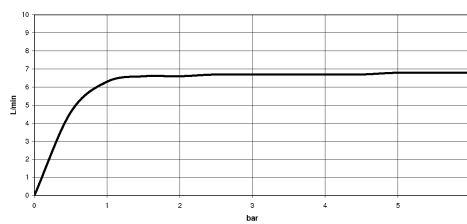
Intrinsic protection against back flow.

| | | |
|---|-------------------------------|---------------|
|  | Brushed Dark Brass | 27 702 979-39 |
|  | Chrome | 27 702 979-00 |
|  | Brushed Platinum | 27 702 979-06 |
|  | Platinum | 27 702 979-08 |
|  | Durabrass (23kt Gold) | 27 702 979-09 |
|  | Dark Chrome | 27 702 979-19 |
| | Brushed Light Gold | 27 702 979-27 |
|  | Brushed Durabrass (23kt Gold) | 27 702 979-28 |
|  | Matte Black | 27 702 979-33 |
|  | Brushed Bronze | 27 702 979-42 |
|  | Brushed Champagne (22kt Gold) | 27 702 979-46 |
|  | Champagne (22kt Gold) | 27 702 979-47 |
|  | Brushed Chrome | 27 702 979-93 |
|  | Brushed Dark Platinum | 27 702 979-99 |

mm [inches]



Flow rate chart



Codes & Standards

DIN 4109

ISO 3822

Scottish Water
Byelaws

UK Water Supply
Regulations

Ü-Zeichen



Hand shower set for bath rim or tile edge installation - Brushed Dark Brass

SERIES SPECIFIC

27 702 979 Product version from 5/15/2020

Certificates and sustainability

LGA_29

WRAS_2209

27 702 979 Product version from 5/15/2020

Parts for other
finishes can be found
here: [Chrome](#)

