

**Body spray without volume control FlowReduce - Chrome**

IMO

28 518 782



Fits: IMO, MEM, CL.1, CYO

- spray head Ø 55mm
- ball-joint pivotable through 25° (in any direction)
- rain flow
- anti-scale system
- rosette 60 x 60 mm
- 1/2" connection
- max. flow 5 l/min
- WRAS 1809018
- This product can help a building meet the requirements of Green Building Rating Systems, e.g. LEED®, BREEAM®, DGNB

	Chrome	28 518 782-00
	Brushed Platinum	28 518 782-06
	Platinum	28 518 782-08
	Dark Chrome	28 518 782-19
	Brushed Light Gold	28 518 782-27
	Brushed Durabross (23kt Gold)	28 518 782-28
	Matte Black	28 518 782-33
	Brushed Champagne (22kt Gold)	28 518 782-46
	Champagne (22kt Gold)	28 518 782-47
	Brushed Chrome	28 518 782-93
	Brushed Dark Platinum	28 518 782-99

**Recommended miscellaneous**



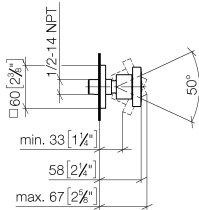
**Concealed wall elbow -**

35 085 970 90

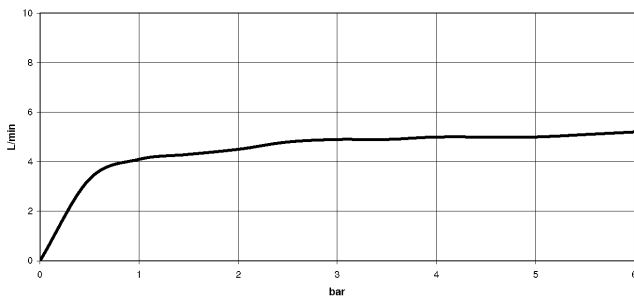
- max. recess depth 163 mm
- min. recess depth 90 mm

28 518 782

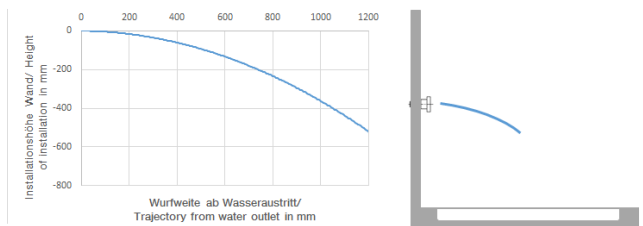
mm [inches]



**Flow rate chart**



**Trajectory diagram**



**Codes & Standards**

ASME A112.18.1

cUPC

DIN 4109

ISO 3822

Scottish Water  
Byelaws

UK Water Supply  
Regulations

Ü-Zeichen



Body spray without volume control FlowReduce - Chrome

IMO

28 518 782

Certificates

LGA\_38

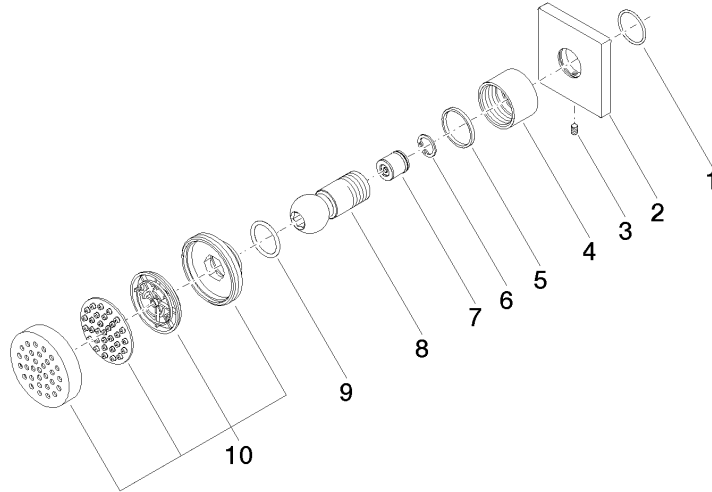
IAPMO\_4976

WRAS\_1809

WRAS\_240602

28 518 782

Product version from 3/10/2014





Body spray without volume control FlowReduce - Chrome

IMO

28 518 782

**Spare parts list**

**Product version from 3/10/2014**

No.	Item Number	Name	Quantity used	Delivery time
	09 14 10 098 90	seal	10	2