

LOT BAR TAP Two-hole mixer with individual rosettes - Brushed Platinum

LOT

32 805 680
Product version from 5/31/2010 to 3/10/2021



- 165mm projection
  - pivotable spout 360°
  - air-enriched flow
  - height of mixer 230 mm
  - height up to laminar flow regulator 205 mm
  - individual rosette 55 x 55 mm
  - hole diameter spout 35 mm
  - single-lever mixer hole diameter 44 mm
  - max. flow 8 l/min at 3 bar flow pressure
  - lead-free
  - WRAS
  - This product can help a building meet the requirements of Green Building Rating Systems, e.g. LEED®, BREEAM®, DGNB
- Operating unit can be positioned freely.

|   |                               |               |
|---|-------------------------------|---------------|
|  | Brushed Platinum              | 32 805 680-06 |
|  | Chrome                        | 32 805 680-00 |
|  | Platinum                      | 32 805 680-08 |
|  | Dark Chrome                   | 32 805 680-19 |
|  | Brushed Durabrass (23kt Gold) | 32 805 680-28 |
|  | Brushed Bronze                | 32 805 680-42 |
|  | Brushed Champagne (22kt Gold) | 32 805 680-46 |
|  | Champagne (22kt Gold)         | 32 805 680-47 |
|  | Brushed Dark Platinum         | 32 805 680-99 |

Recommended miscellaneous

Dispenser with rosette - Brushed Platinum
82 439 970-06



Recommended miscellaneous

Strainer waste with control handle - Brushed Platinum
10 711 970-06



32 805 680 Product version from 5/31/2010 to 3/10/2021



**Flow rate chart**



**Codes & Standards**

|                           |                                |                             |            |
|---------------------------|--------------------------------|-----------------------------|------------|
| DIN 4109                  | EN 817                         | Executive Order<br>no. 1007 | ISO 3822   |
| Scottish Water<br>Byelaws | UK Water Supply<br>Regulations | Ü-Zeichen                   | VA-Zeichen |



LOT BAR TAP Two-hole mixer with individual rosettes - Brushed Platinum

LOT

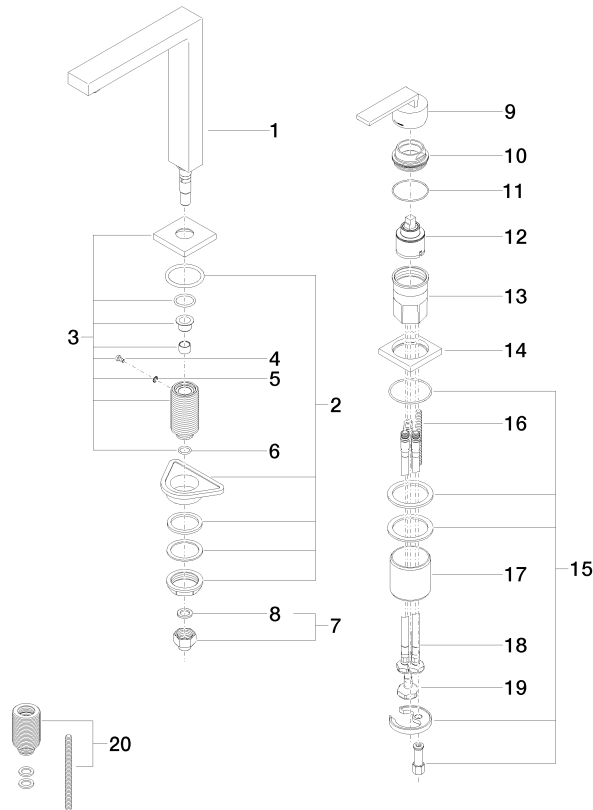
32 805 680    Product version from 5/31/2010 to 3/10/2021

Certificates and sustainability

|          |        |        |             |
|----------|--------|--------|-------------|
| GDV_0400 | LGA_18 | ETA_18 | WRAS_250402 |
|----------|--------|--------|-------------|

32 805 680 Product version from 5/31/2010 to 3/10/2021

Parts for other finishes can be found here: [Chrome](#)



## Spare parts list

| No. | Item Number        | Name            | Quantity used | Delivery time |
|-----|--------------------|-----------------|---------------|---------------|
| 20  | 12 802 970 90      | Extension set - | 1.00          | 60            |
| 19  | 04 30 04 019 00 90 | hose            | 1.00          | 2             |
| 15  | 04 30 11 038 02 90 | fixing set      | 1.00          | 2             |
| 9   | 90 20 78 040 00-06 | handle          | 1.00          | 10            |
| 18  | 04 30 04 104 00 90 | hose            | 2.00          | 2             |
| 17  | 09 18 40 079 90    | sleeve          | 1.00          | 2             |
| 3   | 90 27 78 023 00-06 | rosette         | 1.00          | 10            |
| 11  | 09 14 10 037 90    | seal            | 1.00          | 2             |
| 10  | 09 24 04 142-06    | nut             | 1.00          | 10            |
| 5   | 09 30 11 028 90    | disc            | 1.00          | 2             |
| 13  | 09 30 01 100 10 90 | sleeve          | 1.00          | 2             |
| 4   | 09 30 30 057 90    | screw           | 1.00          | 2             |
| 14  | 09 27 78 007-06    | rosette         | 1.00          | 10            |
| 1   | 90 11 06 192 04-06 | spout           | 1.00          | 10            |
| 16  | 09 31 11 011 90    | pin             | 1.00          | 2             |
| 2   | 04 23 10 044 01 90 | fixing set      | 1.00          | 2             |
| 7   | 04 24 04 166 10 90 | nipple          | 1.00          | 2             |
| 6   | 90 14 10 077 00 90 | seal            | 1.00          | 2             |
| 8   | 90 14 20 002 00 90 | seal            | 1.00          | 2             |
| 12  | 90 15 05 045 00 90 | cartridge       | 1.00          | 2             |