

33 840 790



- 235mm projection
- pivotable spout 360°
- air-enriched flow
- height of mixer 337 mm
- height up to aerator 300 mm
- hole diameter 35 mm
- fabric braided hose 1500 mm
- max. flow 8.8 l/min at 3 bar flow pressure
- lead-free
- This product can help a building meet the requirements of Green Building Rating Systems, e.g. LEED®, BREEAM®, DGNB

Intrinsic protection against back flow.

	Brushed Champagne (22kt Gold)	33 840 790-46
	Chrome	33 840 790-00
	Brushed Platinum	33 840 790-06
	Platinum	33 840 790-08
	Dark Chrome	33 840 790-19
	Brushed Durabronze (23kt Gold)	33 840 790-28
	Champagne (22kt Gold)	33 840 790-47
	Brushed Chrome	33 840 790-93
	Brushed Dark Platinum	33 840 790-99

**Recommended miscellaneous**



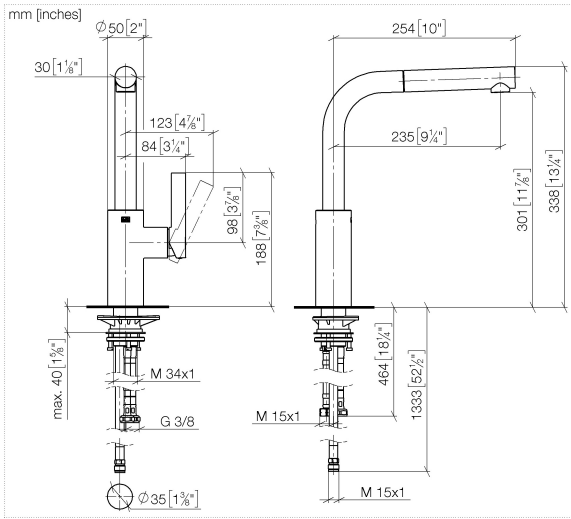
**Dispenser without rosette -  
Brushed Champagne (22kt Gold)** 82 424 970-46

**Recommended miscellaneous**



**Strainer waste with control handle  
- Brushed Champagne (22kt Gold)** 10 712 970-46

33 840 790



**Flow rate chart**



**Codes & Standards**

DIN 4109

EN 1717

Executive Order  
no. 1007

ISO 3822

**Ü-Zeichen**



ELIO Single-lever mixer Pull-out - Brushed Champagne (22kt Gold)

---

ELIO

33 840 790

Certificates

---

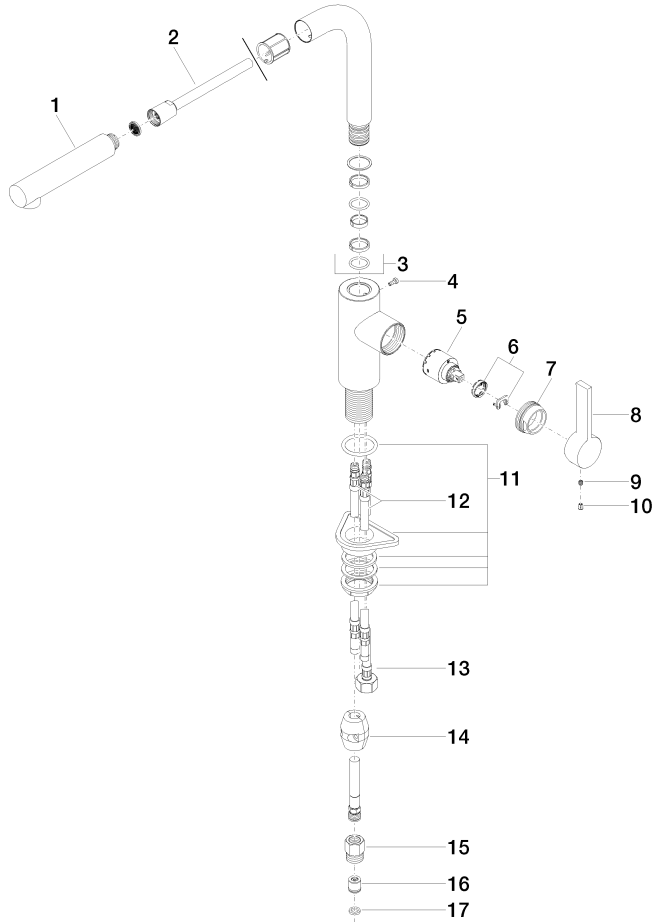
Belgaqua\_22\_277\_2 LGA\_19

GDV\_0400

33 840 790

**Product version from 6/1/2022**

Parts for other finishes can be found here: [Chrome](#)





33 840 790

## **Spare parts list**

**Product version from 6/1/2022**