

33 870 790



- 235mm projection
- pivotable spout 360°
- air-enriched flow and spray flow
- height of mixer 342 mm
- height up to aerator 292 mm
- hole diameter 35 mm
- fabric braided hose 1500 mm
- max. flow 8 l/min at 3 bar flow pressure
- lead-free
- This product can help a building meet the requirements of Green Building Rating Systems, e.g. LEED®, BREEAM®, DGNB

Intrinsic protection against back flow.

	Brushed Chrome	33 870 790-93
	Chrome	33 870 790-00
	Brushed Platinum	33 870 790-06
	Platinum	33 870 790-08
	Dark Chrome	33 870 790-19
	Brushed Durabronze (23kt Gold)	33 870 790-28
	Brushed Champagne (22kt Gold)	33 870 790-46
	Champagne (22kt Gold)	33 870 790-47
	Brushed Dark Platinum	33 870 790-99

**Recommended miscellaneous**

**Dispenser without rosette -  
Brushed Chrome** 82 424 970-93

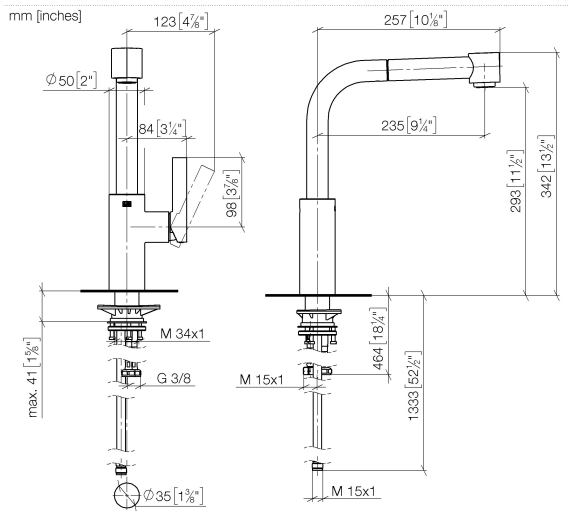


**Recommended miscellaneous**

**Strainer waste with control handle  
- Brushed Chrome** 10 712 970-93



33 870 790



**Flow rate chart**



**Codes & Standards**

EN 1717

Executive Order  
no. 1007



## ELIO Single-lever mixer Pull-out with spray function - Brushed Chrome

---

ELIO

33 870 790

### Certificates

---

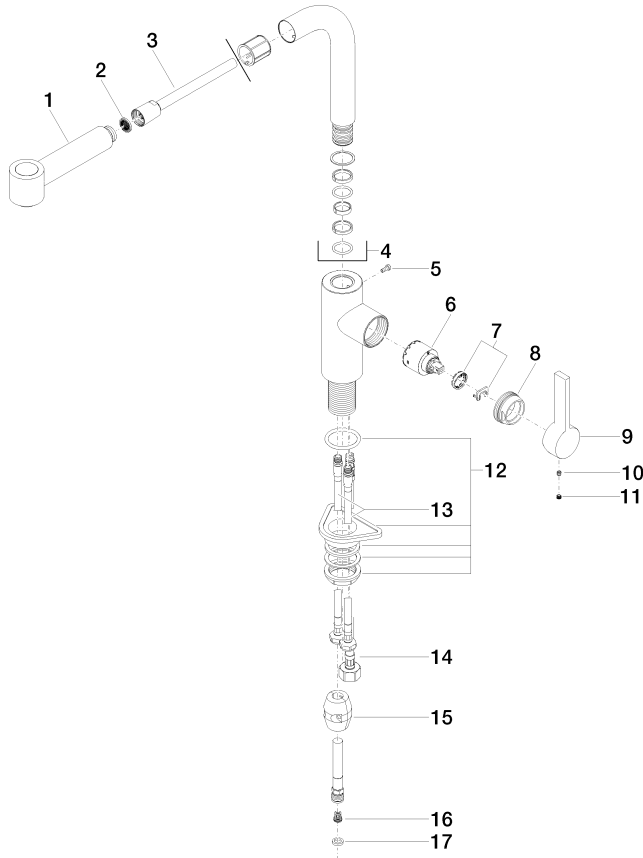
GDV\_0400

Belgaqua\_21-379-2

33 870 790

**Product version from 6/1/2022**

Parts for other finishes can be found here: [Chrome](#)





33 870 790

## **Spare parts list**

**Product version from 6/1/2022**