

## SYNC Single-lever mixer Pull-down with spray function - Chrome

SYNC

33 875 895 Product version from 2/26/2015



- 240mm projection
- pivotable spout 360°
- Optional swivel limiter available with swivel limiter set 12 821 970 90
- laminar and spray flow
- height of mixer 420 mm
- height up to laminar flow regulator 240 mm
- hole diameter 35 mm
- 1800 mm metal shower hose
- sprayface with anti-scaling system
- max. flow 10.4 l/min at 3 bar flow pressure
- lead-free
- Flow modes can be changed while the water is running
- This product can help a building meet the requirements of Green Building Rating Systems, e.g. LEED®, BREEAM®, DGNB

Intrinsic protection against back flow.

|   |                                |               |
|---|--------------------------------|---------------|
|    | Chrome                         | 33 875 895-00 |
|    | Brushed Platinum               | 33 875 895-06 |
|    | Platinum                       | 33 875 895-08 |
|    | Durabronze (23kt Gold)         | 33 875 895-09 |
|    | Dark Chrome                    | 33 875 895-19 |
|    | Brushed Durabronze (23kt Gold) | 33 875 895-28 |
|    | Matte Black                    | 33 875 895-33 |
|    | Brushed Bronze                 | 33 875 895-42 |
|    | Brushed Champagne (22kt Gold)  | 33 875 895-46 |
|   | Champagne (22kt Gold)          | 33 875 895-47 |
|  | Brushed Chrome                 | 33 875 895-93 |
|  | Brushed Dark Platinum          | 33 875 895-99 |

### Recommended miscellaneous

**Swivel limitation set -**

12 821 970 90



### Recommended miscellaneous

**Strainer waste with control handle - Chrome**

10 712 970-00



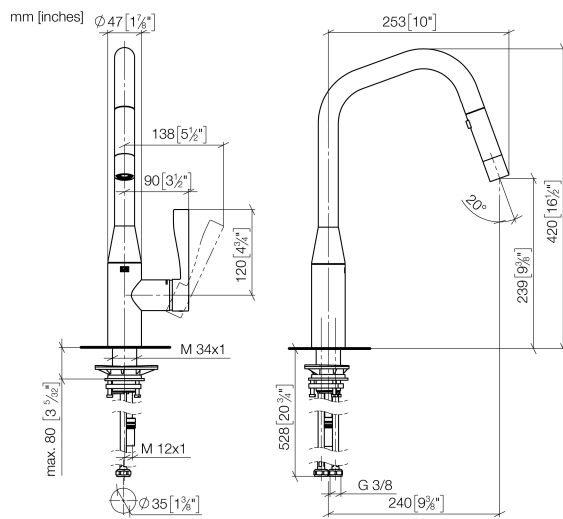
### Recommended miscellaneous

**Dispenser without rosette - Chrome**

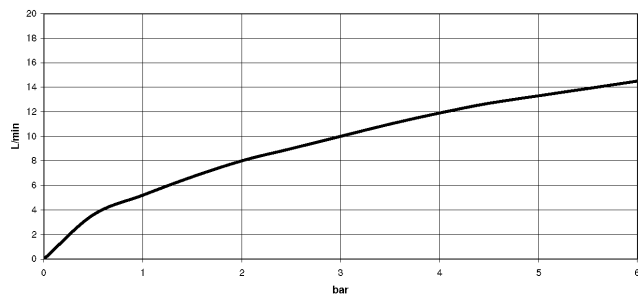
82 424 970-00



33 875 895 Product version from 2/26/2015



**Flow rate chart**



**Codes & Standards**

DIN 4109

EN 1717

Executive Order  
no. 1007

ISO 3822

Ü-Zeichen



## SYNC Single-lever mixer Pull-down with spray function - Chrome

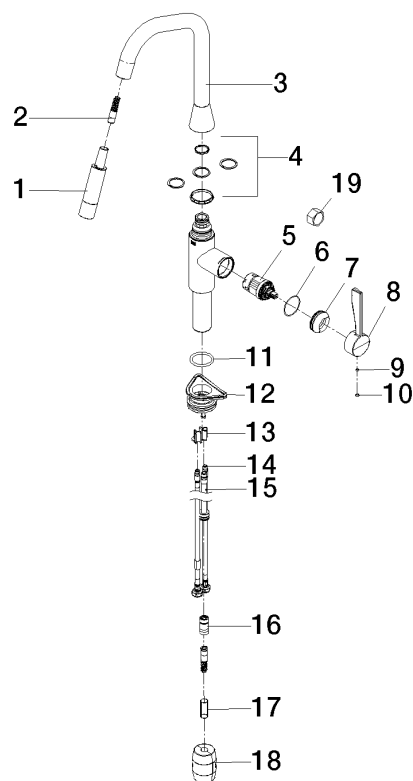
SYNC

33 875 895 Product version from 2/26/2015

### Certificates and sustainability

Belgaqua\_21-027-2 LGA\_28

GDV\_0400



## Spare parts list

| No. | Item Number           | Name                    | Quantity used | Delivery time |
|-----|-----------------------|-------------------------|---------------|---------------|
|     | 10 90 31 20 087 00-00 | plug                    | 1.00          | 10            |
|     | 2 04 30 02 120 00-00  | hose                    | 1.00          | 10            |
|     | 8 09 20 89 020-00     | handle                  | 1.00          | 10            |
|     | 18 04 21 50 010 00 90 | accessories             | 1.00          | 2             |
|     | 17 09 30 03 038 90    | hose                    | 1.00          | 2             |
|     | 7 09 28 30 030-00     | cover                   | 1.00          | 10            |
|     | 6 09 14 10 190 90     | seal                    | 1.00          | 2             |
|     | 16 90 24 03 253 00 90 | adaptor                 | 1.00          | 2             |
|     | 3 90 28 22 301 00-00  | spout                   | 1.00          | 10            |
|     | 19 90 30 09 031 00 90 | key                     | 1.00          | 2             |
|     | 9 90 31 11 063 00 90  | pin                     | 1.00          | 2             |
|     | 15 04 28 20 067 00 90 | pipe                    | 1.00          | 2             |
|     | 5 90 15 05 046 05 90  | cartridge               | 1.00          | 2             |
|     | 4 12 821 970 90       | Swivel limitation set - | 1.00          | 2             |
|     | 1 90 12 11 184 00-00  | shower                  | 1.00          | 10            |
|     | 12 04 30 11 040 00 90 | fixing set              | 1.00          | 2             |
|     | 14 04 30 04 101 00 90 | hose                    | 2.00          | 2             |
|     | 11 09 14 10 036 90    | seal                    | 1.00          | 2             |
|     | 13 09 20 93 056 90    | insert                  | 1.00          | 2             |