


**Concealed single-lever mixer with backflow preventor -**

35 021 970 90




- lead-free, dezincification resistant
- safety combination
- 2x back flow preventer
- 2x male thread 1/2" connection
- 3x outlet G 1/2"
- dust cover
- anti-water packing
- sound and thermal insulation
- 2x integrated supply stop
- gauge 60 mm
- WRAS 2207012


**Recommended miscellaneous**

<b>Extension 25 mm -</b>	12 191 970 90
	


**Recommended miscellaneous**

<b>Extension 25 mm -</b>	12 190 970 90
	


**Recommended miscellaneous**

<b>Leak protection 1/2" -</b>	12 010 970 90
 <ul style="list-style-type: none"> <li>● This article is needed 2x.</li> </ul>	


**Recommended miscellaneous**

	<b>Drybox Concealed single-lever mixer with and without diverter -</b>	39 121 970 90
	<ul style="list-style-type: none"> <li>● Overflow is part of the scope of delivery.</li> </ul>	

**Recommended miscellaneous**

	<b>xGRID Attachment set for integrating in the dry wall construction -</b>	12 340 970 90
---	--	---------------

**Required miscellaneous**

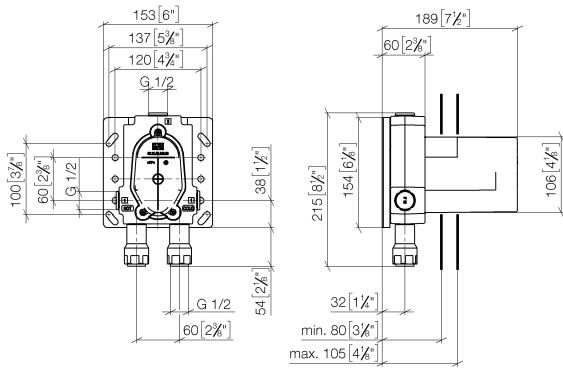
	<b>xGRID Installation track 555 mm -</b>	12 360 970 90
---	--	---------------



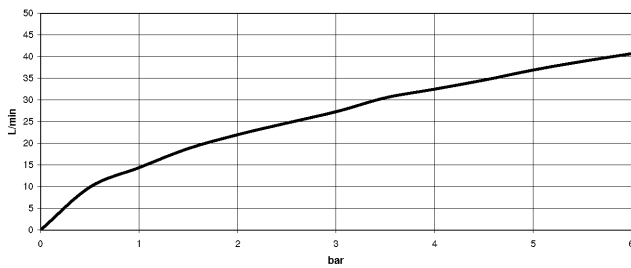
## Concealed single-lever mixer with backflow preventor -

35 021 970 90

mm [inches]



### Flow rate chart



### Codes & Standards

DIN 4109

EN 1717

EN 817

ISO 3822

Scottish Water  
Byelaws

UK Water Supply  
Regulations

Ü-Zeichen



## Concealed single-lever mixer with backflow preventor -

---

35 021 970 90

### Certificates

---

DVGW\_DW-  
6512DN0

WRAS\_2207

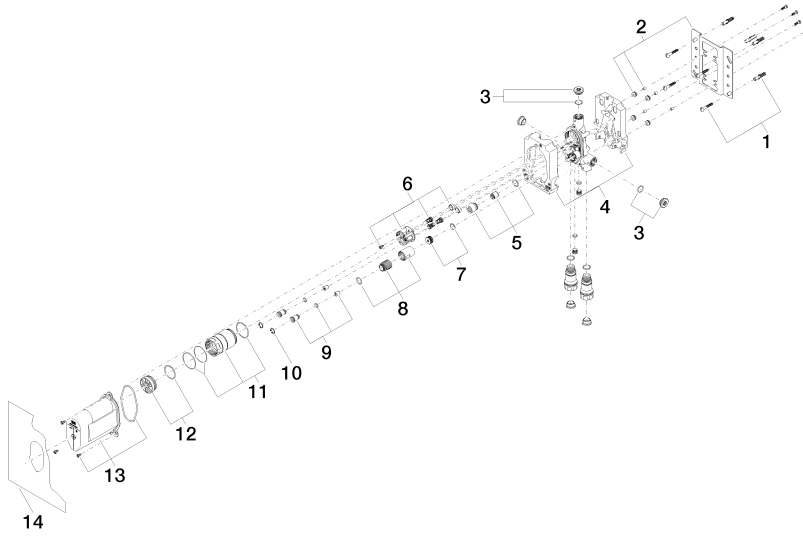
LGA\_19

Belgaqua\_21-385-  
27

Concealed single-lever mixer with backflow preventor -

---

35 021 970 90





## Concealed single-lever mixer with backflow preventor -

---

35 021 970 90

### Spare parts list

No.	Item Number	Name	Quantity used	Delivery time
	04 30 31 024 01 90	fixing set	18	2