

## Concealed wall-mounted single-lever mixer mixer on right -

---

35 816 970 90



- 2x female thread 1/2" connections
- 2x 1/2" x 1000mm high pressure hose
- 1x female thread 1/2" outlet for wall spout
- cartridge
- gauge 100 mm
- lead-free

Recommended combination for this fitting:Rear walls with- wall thickness: 12-16 mm- spout hole diameter: 40 mm- mixer hole diameter: 58 mm- clear width behind wall: 25 mm

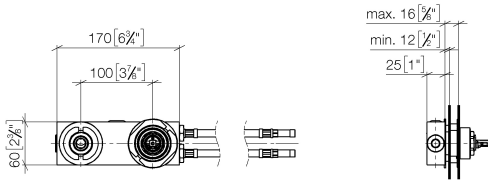
NOTE:Not suitable for concealed installation.Connection by means of angle valves, mounted with screws to back wall.



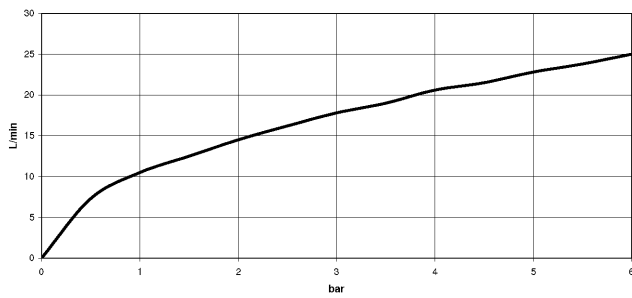
## Concealed wall-mounted single-lever mixer mixer on right -

35 816 970 90

mm [inches]



### Flow rate chart

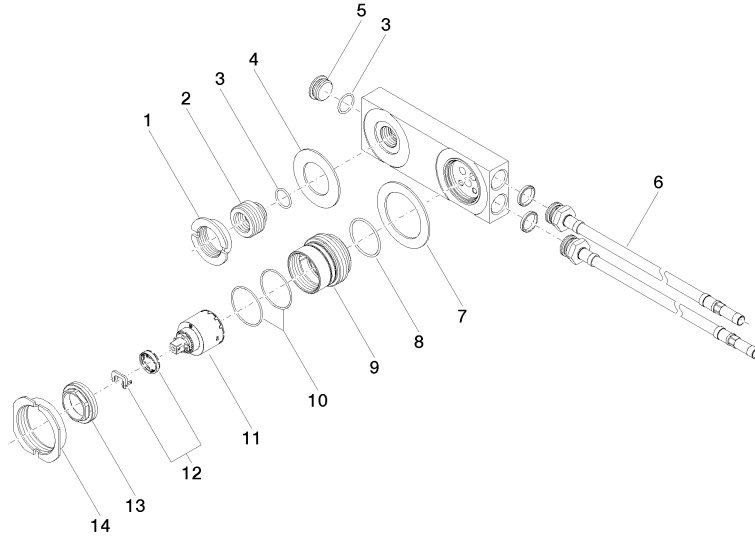


Concealed wall-mounted single-lever mixer mixer on right -

---

35 816 970 90

Product version from 3/16/2015





## Concealed wall-mounted single-lever mixer mixer on right -

---

35 816 970 90

### Spare parts list

#### Product version from 3/16/2015

No.	Item Number	Name	Quantity used	Delivery time
	09 23 10 019-07	nut	17	30