

## WATER POINTS Concealed body spray - Brushed Bronze

36 525 979 Product version from 10/1/2023



- HORIZONTAL RAIN, max. flow rate 9 l/min (at 3 bar)
- with anti-scale system
- cover plate 120 x 120 mm

|   |                                     |               |
|---|-------------------------------------|---------------|
|    | Brushed Bronze                      | 36 525 979-42 |
|    | Chrome                              | 36 525 979-00 |
|    | Brushed Platinum                    | 36 525 979-06 |
|    | Platinum                            | 36 525 979-08 |
|    | Dark Chrome                         | 36 525 979-19 |
|    | Light Gold                          | 36 525 979-26 |
|    | Brushed Light Gold                  | 36 525 979-27 |
|    | Brushed Durabronze<br>(23kt Gold)   | 36 525 979-28 |
|    | Matte Black                         | 36 525 979-33 |
|   | Brushed<br>Champagne (22kt<br>Gold) | 36 525 979-46 |
|  | Champagne (22kt<br>Gold)            | 36 525 979-47 |
|  | Brushed Chrome                      | 36 525 979-93 |
|  | Brushed Dark<br>Platinum            | 36 525 979-99 |

### Required miscellaneous



**WATER POINTS Adapter plate -** 12 305 970 90

### Recommended miscellaneous



**xGRID Attachment set for  
integrating in the dry wall  
construction -** 12 340 970 90

### Required miscellaneous



**Concealed wall installation box -** 35 205 970 90  
 • min. recess depth mm  
 • max. recess depth mm

### Required miscellaneous

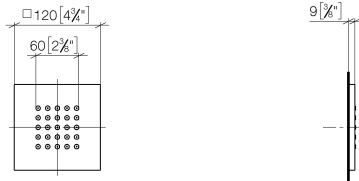


**xGRID Installation track 555 mm -** 12 360 970 90

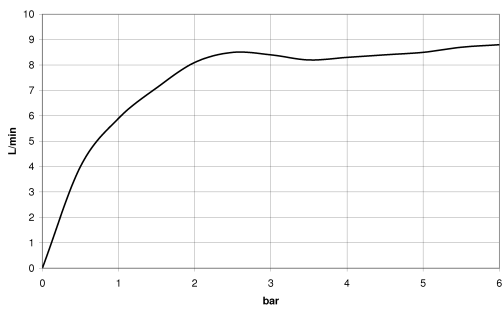
## WATER POINTS Concealed body spray - Brushed Bronze

36 525 979 Product version from 10/1/2023

mm [inches]



### Flow rate chart



### Codes & Standards

DIN 4109

ISO 3822

Ü-Zeichen



## WATER POINTS Concealed body spray - Brushed Bronze

---

36 525 979 Product version from 10/1/2023

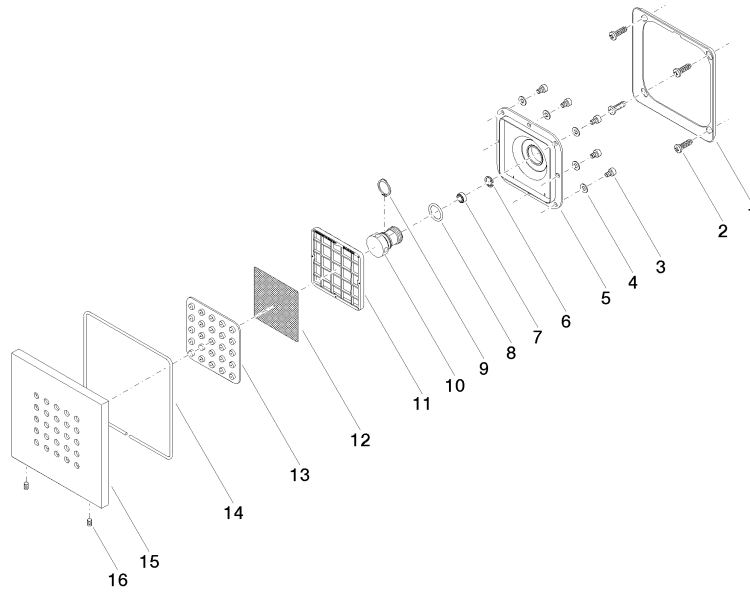
### Certificates

---

LGA\_38

**WATER POINTS Concealed body spray - Brushed Bronze**

36 525 979 Product version from 10/1/2023



**Spare parts list**

| No. | Item Number     | Name         | Quantity used | Delivery time |
|-----|-----------------|--------------|---------------|---------------|
| 1   | 09 28 01 024 90 | holder       | 1             | 2             |
| 2   | 09 30 31 022 90 | screw        | 4             | 2             |
| 3   | 09 30 30 031 90 | screw        | 8             | 2             |
| 4   | 09 30 11 024 90 | disc         | 8             | 2             |
| 5   | 09 12 12 205 90 | base         | 1             | 2             |
| 6   | 09 16 01 016 90 | ring         | 1             | 2             |
| 7   | 09 23 01 136 90 | flow reducer | 1             | 2             |
| 8   | 09 14 10 130 90 | seal         | 1             | 2             |
| 9   | 09 16 01 017 90 | ring         | 1             | 2             |
| 10  | 09 17 11 146 90 | distributor  | 1             | 60            |
| 11  | 09 17 97 057 90 | holder       | 1             | 2             |
| 12  | 09 29 30 043 90 | insert       | 1             | 2             |
| 13  | 09 12 01 075 90 | insert       | 1             | 2             |
| 14  | 09 14 03 117 90 | seal         | 1             | 2             |
| 15  | 09 27 98 004-42 | rosette      | 1             | 60            |
| 16  | 09 31 11 048 90 | pin          | 2             | 2             |