




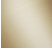


## CL.1 Deck-mounted basin spout without pop-up waste - Brushed Platinum

CL.1

13 714 705

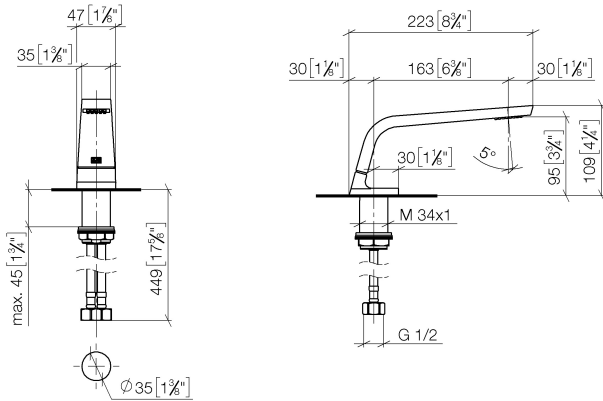


- 160mm projection
- fixed spout
- rectangular spray pattern with 40 individual jets
- height of mixer 108 mm
- height up to aerator 94 mm
- hole diameter 35 mm
- 2x screw-in M 10 x 1 pressure hose, leak-tested
- 1/2" connection
- max. flow 4 l/min
- lead-free
- This product can help a building meet the requirements of Green Building Rating Systems, e.g. LEED®, BREEAM®, DGNB
- WRAS 1512011

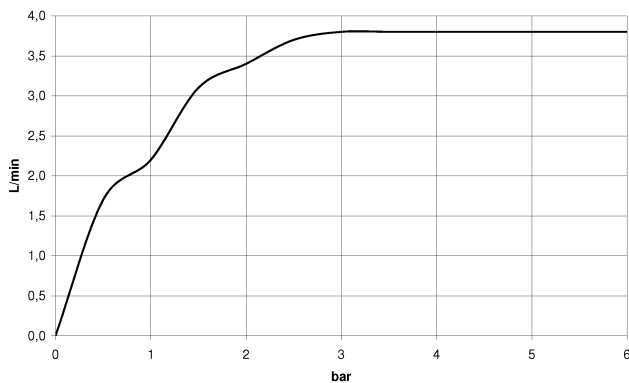
	Brushed Platinum	13 714 705-06
	Chrome	13 714 705-00
	Dark Chrome	13 714 705-19
	Brushed Champagne (22kt Gold)	13 714 705-46
	Champagne (22kt Gold)	13 714 705-47
	Brushed Dark Platinum	13 714 705-99

13 714 705


mm [inches]



**Flow rate chart**



**Codes & Standards**

ASME A112.18.1	cUPC	DIN 4109	EPA WaterSense
Executive Order no. 1007	ISO 3822	NSF372	NSF61
Scottish Water Byelaws	UK Water Supply Regulations	Ü-Zeichen	WaterSense 



CL.1 Deck-mounted basin spout without pop-up waste - Brushed Platinum

CL.1

13 714 705

Certificates

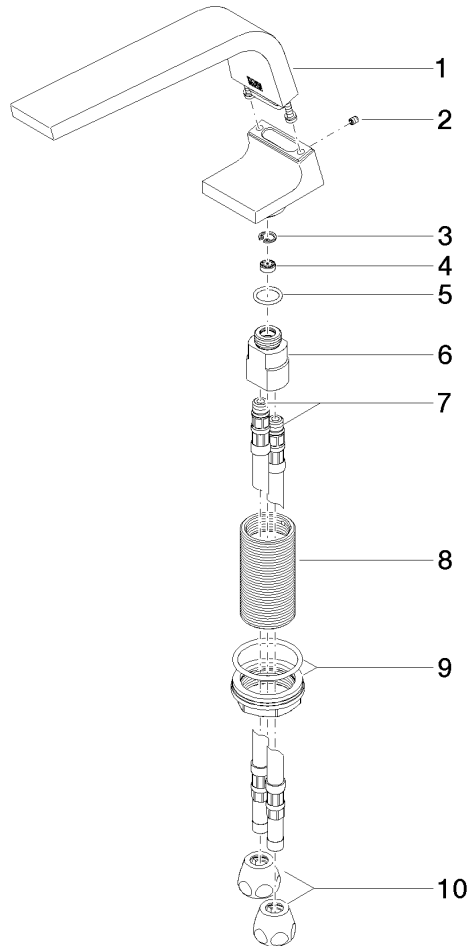
LGA_28	GDV_0400	IAPMO_N-4	IAPMO_8834	IAPMO_6
IAPMO_4976	WRAS_1512			

13 714 705

Product version from 6/15/2021

**Product version from 7/1/2021 to 6/15/2021**

Parts for other  
finishes can be found  
here: [Chrome](#)





## CL.1 Deck-mounted basin spout without pop-up waste - Brushed Platinum

CL.1

13 714 705

### Spare parts list

Product version from 6/15/2021

#### Product version from 7/1/2021 to 6/15/2021

No.	Item Number	Name	Quantity used	Delivery time
	90 11 70 002 00-06	spout	12	10