

MEM Wall-mounted basin spout without pop-up waste - Brushed Dark Brass

MEM

13 800 782 Product version from 3/10/2014

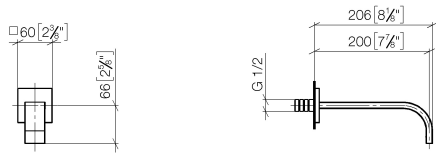


- 200mm projection
- fixed spout
- rectangular, air-enriched flow
- hole diameter 37 mm
- rosette 60 x 60 mm
- 1/2" connection
- max. flow 5.7 l/min
- lead-free
- WRAS
- This product can help a building meet the requirements of Green Building Rating Systems, e.g. LEED®, BREEAM®, DGNB

| | | |
|---|--------------------------------|---------------|
|  | Brushed Dark Brass | 13 800 782-39 |
|  | Chrome | 13 800 782-00 |
|  | Brushed Platinum | 13 800 782-06 |
|  | Platinum | 13 800 782-08 |
|  | Dark Chrome | 13 800 782-19 |
|  | Brushed Durabronze (23kt Gold) | 13 800 782-28 |
|  | Brushed Champagne (22kt Gold) | 13 800 782-46 |
|  | Champagne (22kt Gold) | 13 800 782-47 |
|  | Brushed Dark Platinum | 13 800 782-99 |

13 800 782 Product version from 3/10/2014

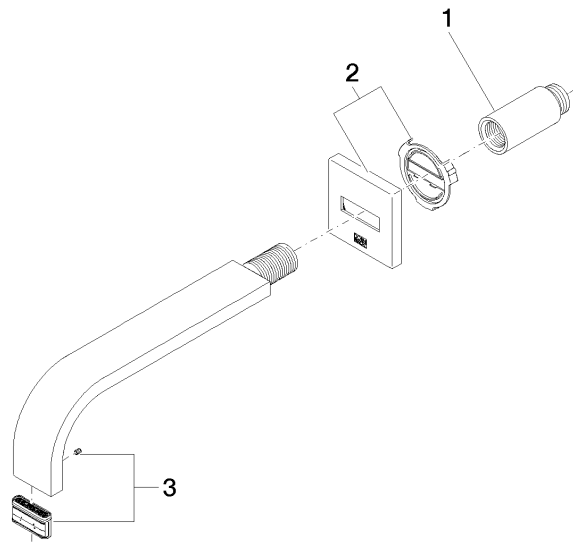
mm [inches]



Flow rate chart



Parts for other finishes can be found here: [Chrome](#)



Spare parts list

| No. | Item Number | Name | Quantity used | Delivery time |
|-----|--------------------|-----------|---------------|---------------|
| 2 | 90 27 78 035 00-39 | rosette | 1.00 | 30 |
| 1 | 09 24 03 081 10 90 | extension | 1.00 | 2 |
| 3 | 90 29 03 109 00 90 | aerator | 1.00 | 2 |