

TARA Bath spout for wall mounting - Brushed Platinum

TARA

13 801 892



- 200mm projection
- circular normal flow
- rosette Ø 55 mm
- hole diameter 37 mm
- 1/2" connection
- max. flow 29 l/min at 3 bar flow pressure
- WRAS 1811020

| | | |
|--|--------------------------------|---------------|
|  | Brushed Platinum | 13 801 892-06 |
|  | Chrome | 13 801 892-00 |
|  | Platinum | 13 801 892-08 |
|  | Dark Chrome | 13 801 892-19 |
|  | Brushed Durabronze (23kt Gold) | 13 801 892-28 |
|  | Matte Black | 13 801 892-33 |
|  | Brushed Bronze | 13 801 892-42 |
|  | Brushed Champagne (22kt Gold) | 13 801 892-46 |
|  | Champagne (22kt Gold) | 13 801 892-47 |
|  | Brushed Chrome | 13 801 892-93 |
|  | Brushed Dark Platinum | 13 801 892-99 |

Recommended miscellaneous



Concealed wall elbow -

35 085 970 90

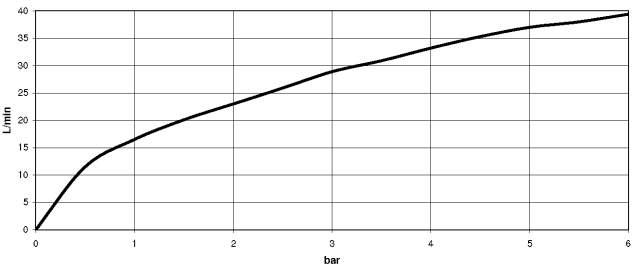
- max. recess depth 163 mm
- min. recess depth 90 mm

13 801 892

mm [inches]



Flow rate chart



Codes & Standards

ASME A112.18.1

cUPC

DIN 4109

ISO 3822

Scottish Water
Byelaws

UK Water Supply
Regulations

Ü-Zeichen



TARA Bath spout for wall mounting - Brushed Platinum

TARA

13 801 892

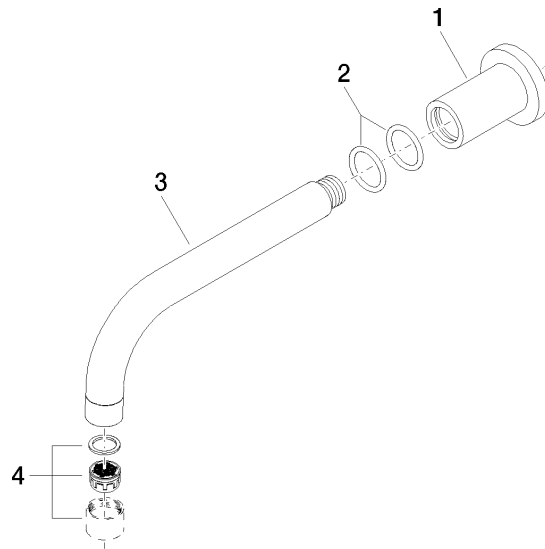
Certificates

WRAS_1811

LGA_18

IAPMO_4976

Product version from 4/1/2024





TARA Bath spout for wall mounting - Brushed Platinum

TARA

13 801 892

Spare parts list

Product version from 4/1/2024

| No. | Item Number | Name | Quantity used | Delivery time |
|-----|-----------------|---------|---------------|---------------|
| | 09 27 89 009-06 | rosette | 5 | 10 |