

VAIA Three-hole bridge mixer Pull-down with spray function - Brushed Bronze
VAIA

19 875 809
Product version from 7/1/2023



- 240mm projection
- pivotable spout 360°
- Optional swivel limiter available with swivel limiter set 12 823 970 90
- air-enriched flow and spray flow
- 1800 mm metal shower hose
- sprayface with anti-scaling system
- max. flow 8 l/min at 3 bar flow pressure
- lead-free
- Flow modes can be changed while the water is running
- This product can help a building meet the requirements of Green Building Rating Systems, e.g. LEED®, BREEAM®, DGNB


Intrinsic protection against back flow.

	Brushed Bronze	19 875 809-42
	Chrome	19 875 809-00
	Brushed Platinum	19 875 809-06
	Platinum	19 875 809-08
	Durabrass (23kt Gold)	19 875 809-09
	Dark Chrome	19 875 809-19
	Brushed Durabrass (23kt Gold)	19 875 809-28
	Matte Black	19 875 809-33
	Brushed Champagne (22kt Gold)	19 875 809-46
	Champagne (22kt Gold)	19 875 809-47
	Brushed Chrome	19 875 809-93
	Brushed Dark Platinum	19 875 809-99

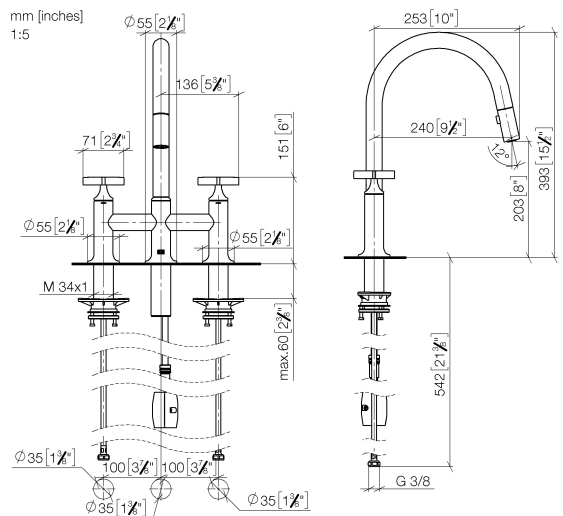
Recommended miscellaneous

	
Swivel limitation set -	12 823 970 90

Recommended miscellaneous

	
VAIA Dispenser with rosette - Brushed Bronze	82 434 809-42

19 875 809 Product version from 7/1/2023



Flow rate chart



## Codes & Standards

DIN 4109

EN 1717

ISO 3822

Ü-Zeichen



## VAIA Three-hole bridge mixer Pull-down with spray function - Brushed Bronze

---

VAIA

19 875 809 Product version from 7/1/2023

### Certificates and sustainability

---

LGA\_38

Belgaqua\_24-005-2



## Spare parts list

No.	Item Number	Name	Quantity used	Delivery time
2	90 20 80 036 00-42	handle	2.00	30
12	90 18 40 317 00-42	shower	1.00	30
9	04 30 02 120 00-42	hose	1.00	-
Spare part can no longer be ordered, please order the replacement item				
1	90 28 22 397 00-42	spout	1.00	30
4	90 90 03 131 00 90	top	2.00	2
7	04 30 04 100 00 90	hose	2.00	2
8	04 21 50 010 00 90	accessories	1.00	2
5	04 30 11 040 00 90	fixing set	2.00	2
11	90 14 10 043 00 90	seal	3.00	2
10	90 24 03 253 00 90	adaptor	1.00	2
3	90 12 12 232 00 90	fixing cap	2.00	2
6	04 28 20 066 00 90	pipe	1.00	2