

LISSE Three-hole basin mixer with pop-up waste - Brushed Platinum

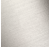


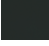


LISSE

20 713 845



- 130mm projection
 - fixed spout
 - circular, air-enriched flow
 - height of mixer 95 mm
 - height up to aerator 75 mm
 - hole diameter valve 32 mm
 - hole diameter spout 35 mm
 - rosette Ø 48 mm
 - max. flow 5.7 l/min
 - lead-free
 - WRAS 2210005
 - This product can help a building meet the requirements of Green Building Rating Systems, e.g. LEED®, BREEAM®, DGNB
- Only suitable for basins with an overflow.**

Only suitable for basins with an overflow.

| | | |
|--|-----------------------|---------------|
|  | Brushed Platinum | 20 713 845-06 |
|  | Chrome | 20 713 845-00 |
|  | Dark Chrome | 20 713 845-19 |
|  | Matte Black | 20 713 845-33 |
|  | Brushed Chrome | 20 713 845-93 |
|  | Brushed Dark Platinum | 20 713 845-99 |

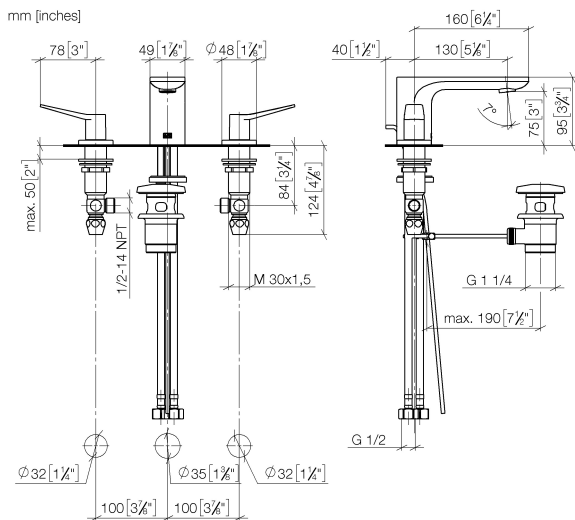
Required miscellaneous



High pressure hoses -
• 2x 3/8" x 1/2" x 500mm high pressure hose

12 506 970 90

20 713 845



Flow rate chart



Codes & Standards

DIN 4109

ISO 3822

Scottish Water
Byelaws

UK Water Supply
Regulations

Ü-Zeichen



LISSE Three-hole basin mixer with pop-up waste - Brushed Platinum

LISSE

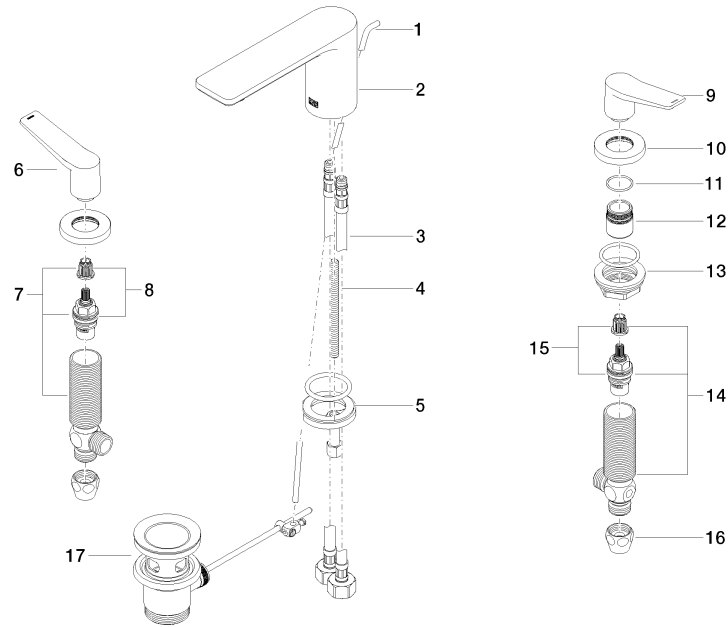
20 713 845

Certificates

LGA_29

WRAS_2210

Product version from 3/9/2016





LISSE Three-hole basin mixer with pop-up waste - Brushed Platinum

LISSE

20 713 845

Spare parts list

Product version from 3/9/2016

| No. | Item Number | Name | Quantity used | Delivery time |
|-----|-----------------|----------|---------------|---------------|
| | 09 31 09 120-06 | pull-rod | 23 | 10 |