

## TARA Three-hole basin mixer with pop-up waste - Chrome

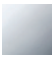

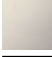
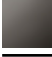




TARA

20 713 892



- 165mm projection
- pivotable spout 360°
- circular, air-enriched flow
- height of mixer 285 mm
- height up to aerator 163 mm
- hole diameter valve 32 mm
- hole diameter spout 35 mm
- rosette Ø 55 mm
- 2x screw-in M 10 x 1 pressure hose, leak-tested
- max. flow 7 l/min
- lead-free
- WRAS 2212026
- This product can help a building meet the requirements of Green Building Rating Systems, e.g. LEED®, BREEAM®, DGNB

Only suitable for basins with an overflow.

|  |                                |               |
|--|--------------------------------|---------------|
|   | Chrome                         | 20 713 892-00 |
|   | Brushed Platinum               | 20 713 892-06 |
|   | Platinum                       | 20 713 892-08 |
|   | Dark Chrome                    | 20 713 892-19 |
|   | Brushed Durabronze (23kt Gold) | 20 713 892-28 |
|   | Matte Black                    | 20 713 892-33 |
|   | Brushed Champagne (22kt Gold)  | 20 713 892-46 |
|   | Champagne (22kt Gold)          | 20 713 892-47 |
|   | Brushed Chrome                 | 20 713 892-93 |
|  | Brushed Dark Platinum          | 20 713 892-99 |

### Recommended miscellaneous



#### High pressure hoses -

- 2x 3/8" x 1/2" x 500mm high pressure hose

12 506 970 90

20 713 892



### Flow rate chart



### Certificates

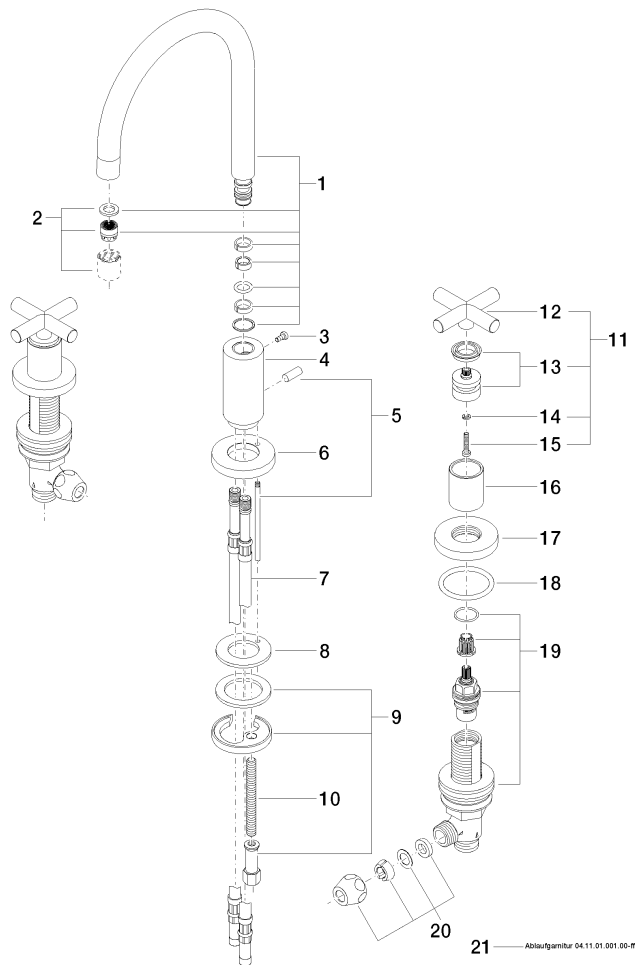
LGA\_18925.

ETA\_18514.

WRAS\_2212026.

ACS\_20 ACC LY 736. GDV\_0400289.

20 713 892



## Spare parts list

| No. | Item Number        | Name               | Quantity used | Delivery time |
|-----|--------------------|--------------------|---------------|---------------|
| 1   | 90 28 22 213 01-00 | spout              | 1             | 10            |
| 2   | 90 23 01 028 03-00 | aerator            | 1             | 10            |
| 3   | 09 30 30 057 90    | screw              | 1             | 2             |
| 4   | 09 11 10 087 10-00 | connection         | 1             | 10            |
| 5   | 04 20 89 030 80-00 | pull-rod           | 1             | 10            |
| 6   | 09 28 10 133-00    | ring               | 1             | 10            |
| 7   | 04 30 04 019 00 90 | hose               | 2             | 2             |
| 8   | 09 14 05 047 90    | seal               | 1             | 2             |
| 9   | 04 30 11 038 00 90 | fixing set         | 1             | 2             |
| 10  | 09 31 11 011 90    | pin                | 1             | 2             |
| 11  | 90 20 89 010 10-00 | handle             | 2             | 10            |
| 12  | 09 20 89 010-00    | handle             | 2             | 60            |
| 13  | 90 12 12 007 00-00 | base               | 2             | 10            |
| 14  | 90 30 11 029 00 90 | disc               | 2             | 2             |
| 15  | 90 30 30 075 00 90 | screw              | 2             | 2             |
| 16  | 09 21 02 140-00    | sleeve             | 2             | 10            |
| 17  | 09 27 89 105-00    | rosette            | 2             | 10            |
| 18  | 90 14 10 043 00 90 | seal               | 2             | 2             |
| 19  | 90 17 11 040 51 90 | side panel         | 2             | 2             |
| 20  | 90 23 30 040 00-00 | threaded connector | 4             | 10            |
| 21  | 90 11 01 001 00-00 | pop-up waste       | 1             | 10            |