

MEM Single-lever bath mixer with stand pipe for free-standing assembly with hand shower set - Brushed Champagne (22kt Gold)

MEM

25 863 782



- 281mm projection
- spout: cascade
- max. flow 25.1 l/min at 3 bar flow pressure
- Hand shower: COMPACT RAIN, max. flow rate 6.8 l/min (at 3 bar)
- bar-type hand shower with anti-scale system
- wall bracket
- automatic bath/shower diverter
- total height 1139 - 1209 mm
- stand pipe height 598 - 668 mm
- height up to aerator 968 – 1038 mm
- push-on rosette 131 x 131 mm
- metal shower hose 1250mm with integrated anti-twist protection
- WRAS 240502007

| | | |
|--|--------------------------------|---------------|
|  | Brushed Champagne (22kt Gold) | 25 863 782-46 |
|  | Chrome | 25 863 782-00 |
|  | Brushed Platinum | 25 863 782-06 |
|  | Platinum | 25 863 782-08 |
|  | Dark Chrome | 25 863 782-19 |
|  | Brushed Durabronze (23kt Gold) | 25 863 782-28 |
|  | Champagne (22kt Gold) | 25 863 782-47 |
|  | Brushed Dark Platinum | 25 863 782-99 |

Required miscellaneous



Concealed floor mounting -

35 945 970 90

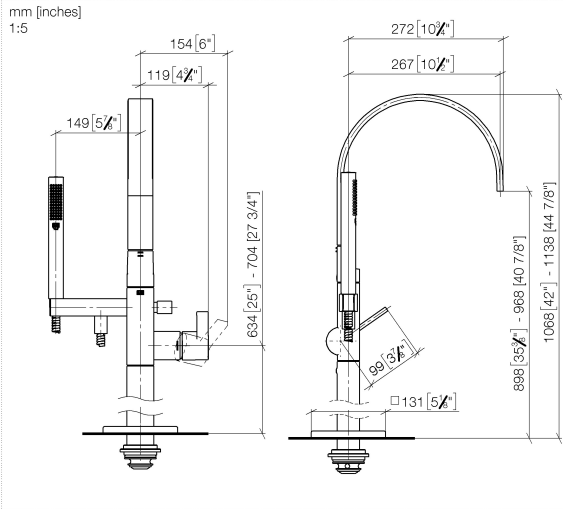
- max. recess depth 150 mm
- min. recess depth 80 mm

MEM Single-lever bath mixer with stand pipe for free-standing assembly with hand shower set - Brushed Champagne (22kt Gold)

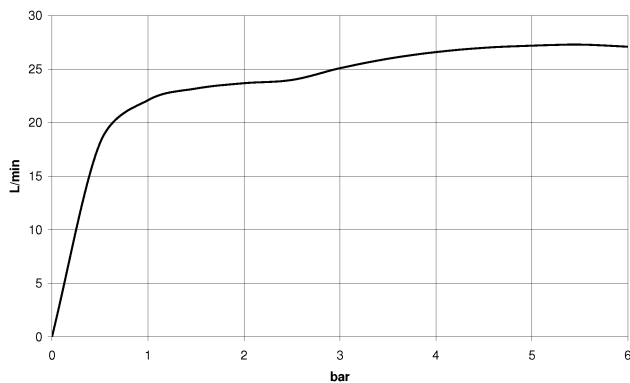
MEM

25 863 782

mm [inches]
1:5



Flow rate chart



Codes & Standards

DIN 4109

ISO 3822

Scottish Water
Byelaws

UK Water Supply
Regulations

Ü-Zeichen



MEM Single-lever bath mixer with stand pipe for free-standing assembly with
hand shower set - Brushed Champagne (22kt Gold)

MEM

25 863 782

Certificates

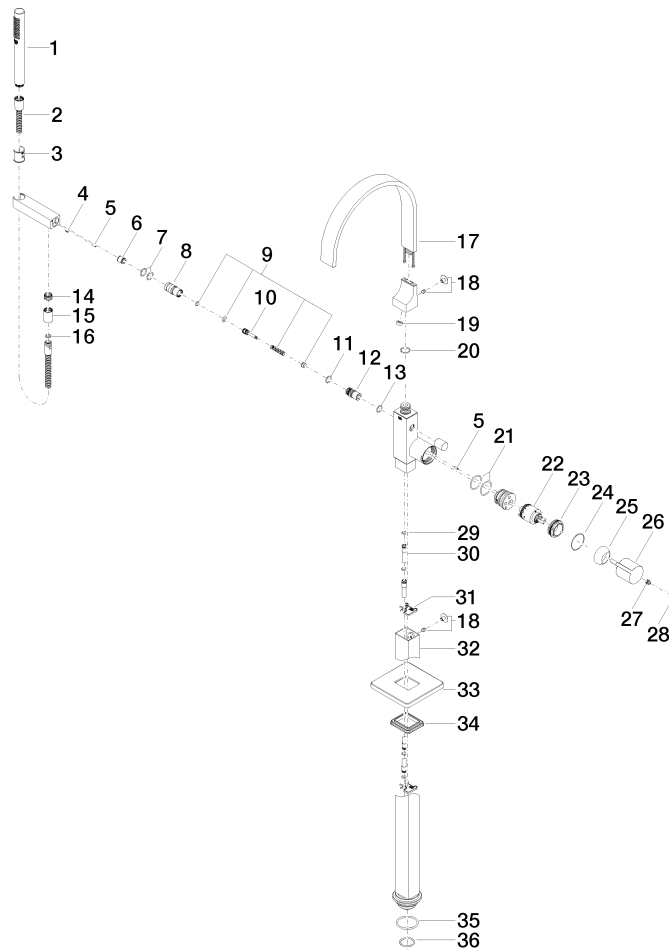
LGA_38

WRAS_240502

MEM Single-lever bath mixer with stand pipe for free-standing assembly with hand shower set - Brushed Champagne (22kt Gold)

MEM

25 863 782





MEM Single-lever bath mixer with stand pipe for free-standing assembly with
hand shower set - Brushed Champagne (22kt Gold)

MEM

25 863 782

Spare parts list

| No. | Item Number | Name | Quantity used | Delivery time |
|-----|--------------------|--------|---------------|---------------|
| | 90 12 11 140 30-46 | shower | 46 | 30 |