

## Shower set without hand shower - Brushed Bronze

26 413 979 Product version from 10/1/2023



- COMPACT RAIN, max. flow rate l/min (at 3 bar)
- \_x000D\_
- gauge 853 mm
- shower hose connector 3/8"
- metal shower hose 1750mm with integrated anti-twist protection
- slide bar
- Pipe diameter 18 mm
- inherently safe from back flow.
- WRAS

This article does not include a hand shower!

	Brushed Bronze	26 413 979-42
	Chrome	26 413 979-00
	Brushed Platinum	26 413 979-06
	Platinum	26 413 979-08
	Dark Chrome	26 413 979-19
	Light Gold	26 413 979-26
	Brushed Light Gold	26 413 979-27
	Brushed Durabronze (23kt Gold)	26 413 979-28
	Matte Black	26 413 979-33
	Brushed Champagne (22kt Gold)	26 413 979-46
	Champagne (22kt Gold)	26 413 979-47
	Brushed Chrome	26 413 979-93
	Brushed Dark Platinum	26 413 979-99

### Recommended miscellaneous

	<b>Concealed wall elbow -</b> • min. recess depth mm • max. recess depth mm	35 085 970 90
--	---	---------------

### Required miscellaneous

	<b>Hand shower - Brushed Bronze</b>	28 016 979-42
--	-------------------------------------	---------------

### Required miscellaneous

	<b>Hand shower - Brushed Bronze</b>	28 018 979-42
--	-------------------------------------	---------------

### Required miscellaneous

	<b>Hand shower FlowReduce - Brushed Bronze</b>	28 016 979-42 0010
--	--	-----------------------

### Required miscellaneous

	<b>Hand shower - Brushed Bronze</b>	28 012 979-42
--	-------------------------------------	---------------

### Required miscellaneous

	<b>Hand shower FlowReduce - Brushed Bronze</b>	28 012 979-42 0010
--	--	-----------------------

### Required miscellaneous

	<b>Hand shower - Brushed Bronze</b>	28 017 979-42
--	-------------------------------------	---------------

### Required miscellaneous

	<b>Hand shower FlowReduce - Brushed Bronze</b>	28 018 979-42 0010
--	--	-----------------------

**Shower set without hand shower - Brushed Bronze**

26 413 979    Product version from 10/1/2023



**Codes & Standards**

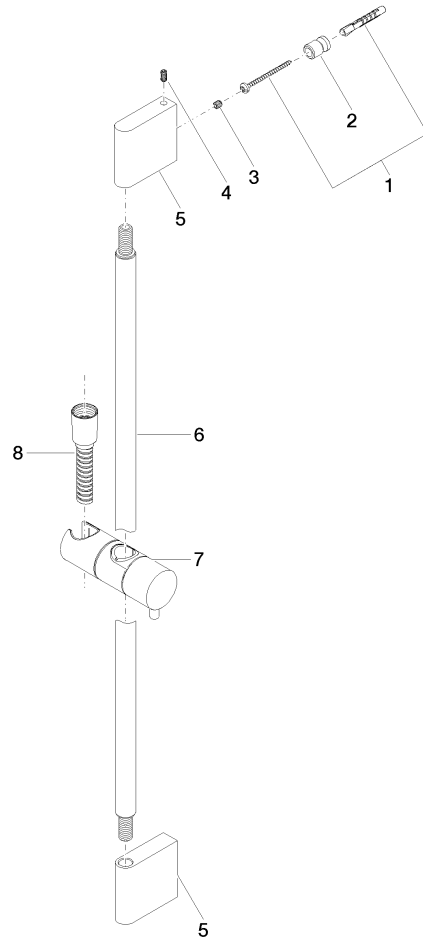
ASME A112.18.1    cUPC

**Certificates**

IAPMO\_4976

**Shower set without hand shower - Brushed Bronze**

26 413 979 Product version from 10/1/2023



**Spare parts list**

No.	Item Number	Name	Quantity used	Delivery time
1	05 17 20 726 02 90	fixing set	2	2
2	08 17 20 726 90	holder	2	2
3	09 31 11 049 90	pin	2	2
4	04 31 11 113 00 90	pin	2	2
5	08 17 97 054-42	holder	2	60
6	90 28 22 597 00-42	holder	1	30
7	12 580 970-42	Slide unit - Brushed Bronze	1	30
8	28 322 970-42	Metal shower hose 1/2" x 3/8" x 1750 mm - Brushed Bronze	1	30