





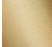
CYO Bath shower set for bath rim or tile edge installation - Brushed Dark Platinum

27 632 811



- 167mm projection
- spout: rectangular normal flow
- max. flow 23.8 l/min at 3 bar flow pressure
- Hand shower: COMPACT RAIN, max. flow rate 6.8 l/min (at 3 bar)
- complete hand shower set with anti-scale system
- automatic bath/shower diverter
- height of mixer 198 mm
- height up to aerator 133 mm
- hole diameter spout 28 mm
- hole diameter for complete hand shower set 32 mm
- rosette for mixer 60 x 60mm
- rosette for complete hand shower set 60 x 60mm
- metal shower hose 1750mm with integrated anti-twist protection
- WRAS

Intrinsic protection against back flow.

| | | |
|---|--------------------------------|---------------|
|  | Brushed Dark Platinum | 27 632 811-99 |
|  | Chrome | 27 632 811-00 |
|  | Brushed Platinum | 27 632 811-06 |
|  | Dark Chrome | 27 632 811-19 |
|  | Brushed Durabronze (23kt Gold) | 27 632 811-28 |

Recommended miscellaneous



Perfecto installation kit -

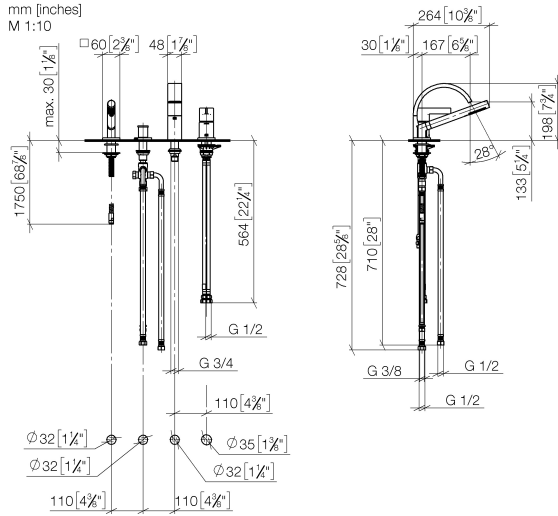
12 614 970 90

CYO Bath shower set for bath rim or tile edge installation - Brushed Dark Platinum

27 632 811

mm [inches]
M 1:10

M 1:10



Flow rate chart



Codes & Standards

| | | | |
|----------------|------------------------|-----------------------------|-----------|
| ASME A112.18.1 | cUPC | DIN 4109 | EN 1717 |
| ISO 3822 | Scottish Water Byelaws | UK Water Supply Regulations | Ü-Zeichen |



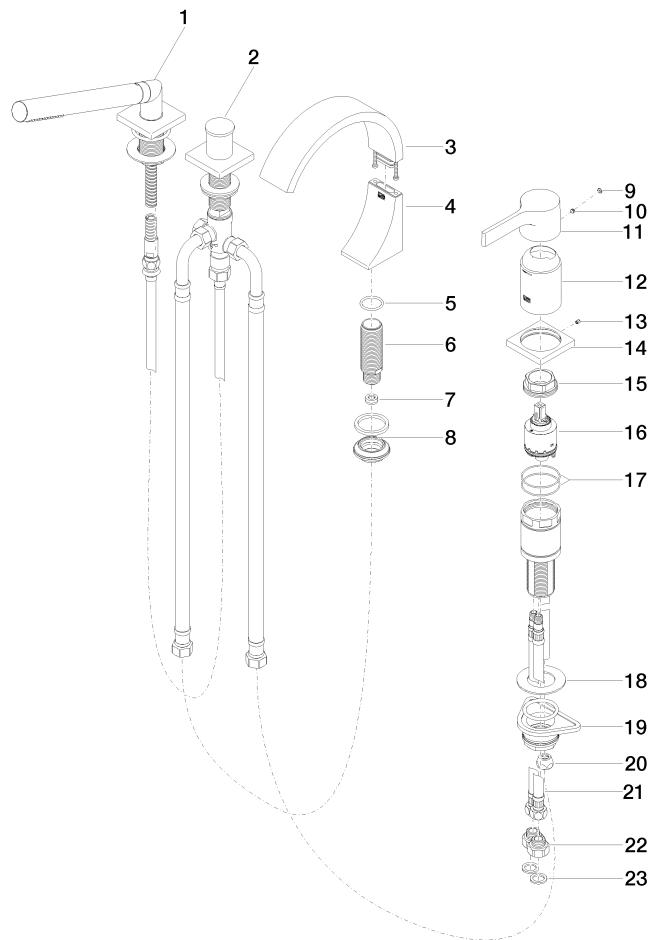
CYO Bath shower set for bath rim or tile edge installation - Brushed Dark
Platinum

27 632 811
Certificates

| | | | |
|--------|------------|-----------|-------------------|
| LGA_38 | IAPMO_4976 | WRAS_2204 | Belgaqua_21-380-2 |
|--------|------------|-----------|-------------------|

**CYO Bath shower set for bath rim or tile edge installation - Brushed Dark
Platinum**

27 632 811





CYO Bath shower set for bath rim or tile edge installation - Brushed Dark Platinum

27 632 811

Spare parts list

| No. | Item Number | Name | Quantity used | Delivery time |
|-----|--------------------|---|---------------|---------------|
| 1 | 27 702 980-99 | Hand shower set for bath rim or tile edge installation - Brushed Dark Platinum | 1 | 20 |
| 2 | 29 140 670-99 | Two-way diverter for bath rim or tile edge installation - Brushed Dark Platinum | 1 | 20 |
| 3 | 90 11 70 013 00-99 | spout | 1 | 20 |
| 4 | 90 19 70 011 00-99 | connection | 1 | 20 |
| 5 | 09 14 10 009 90 | seal | 1 | 2 |
| 6 | 09 30 01 117 90 | connection | 1 | 2 |
| 7 | 09 23 01 057 90 | flow reducer | 1 | 2 |
| 8 | 04 23 10 044 09 90 | fixing set | 1 | 2 |
| 9 | 90 31 20 087 00-99 | plug | 1 | 20 |
| 10 | 90 31 11 063 00 90 | pin | 1 | 2 |
| 11 | 09 20 67 007-99 | handle | 1 | 20 |
| 12 | 09 28 30 037-99 | cover | 1 | 20 |
| 13 | 09 31 11 044 90 | pin | 1 | 2 |
| 14 | 09 27 67 016-99 | rosette | 1 | 20 |
| 15 | 09 24 04 448 90 | nut | 1 | 2 |
| 16 | 90 15 05 039 00 90 | cartridge | 1 | 2 |
| 17 | 09 14 10 201 90 | seal | 2 | 2 |
| 18 | 09 30 11 060 90 | disc | 1 | 2 |
| 19 | 04 23 10 044 02 90 | fixing set | 1 | 2 |
| 20 | 04 23 30 041 00 90 | threaded connector | 1 | 2 |
| 21 | 04 30 04 021 00 90 | hose | 2 | 2 |
| 22 | 09 24 03 185-00 | nipple | 2 | 10 |
| 23 | 09 14 05 004 90 | seal | 2 | 2 |