

## Rinsing spray set - Brushed Chrome

27 731 970



- with round rosette
- spray flow
- automatic spout/shower diverter
- height of mixer 191 mm
- hole diameter rinsing spray 32mm
- fabric braided hose 1500 mm
- sprayface with anti-scaling system
- lead-free

Can only be combined with 32815682, 33826861, 32815861, 33836888, 32816888, 20816892, 33836875, 32815875.

Intrinsic protection against back flow.

Residual water may emerge from the spray after closing.

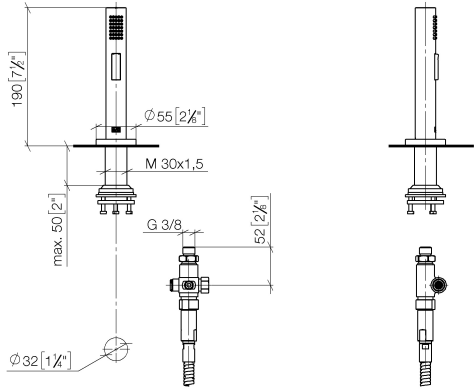
Operating unit can be positioned freely.

|                                                                                      |                               |               |
|--------------------------------------------------------------------------------------|-------------------------------|---------------|
|    | Brushed Chrome                | 27 731 970-93 |
|    | Chrome                        | 27 731 970-00 |
|    | Brushed Platinum              | 27 731 970-06 |
|    | Platinum                      | 27 731 970-08 |
|    | Durabrass (23kt Gold)         | 27 731 970-09 |
|    | Dark Chrome                   | 27 731 970-19 |
|    | Brushed Durabrass (23kt Gold) | 27 731 970-28 |
|    | Matte Black                   | 27 731 970-33 |
|    | Brushed Champagne (22kt Gold) | 27 731 970-46 |
|   | Champagne (22kt Gold)         | 27 731 970-47 |
|  | Brushed Dark Platinum         | 27 731 970-99 |

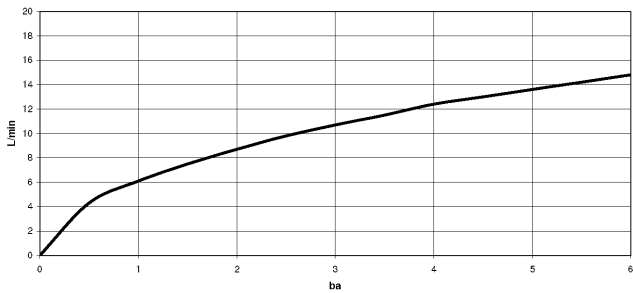
# Rinsing spray set - Brushed Chrome

27 731 970

mm [inches]



## Flow rate chart



## Codes & Standards

|          |         |          |           |
|----------|---------|----------|-----------|
| DIN 4109 | EN 1717 | ISO 3822 | Ü-Zeichen |
|----------|---------|----------|-----------|



## Rinsing spray set - Brushed Chrome

---

27 731 970

### Certificates

---

LGA\_29

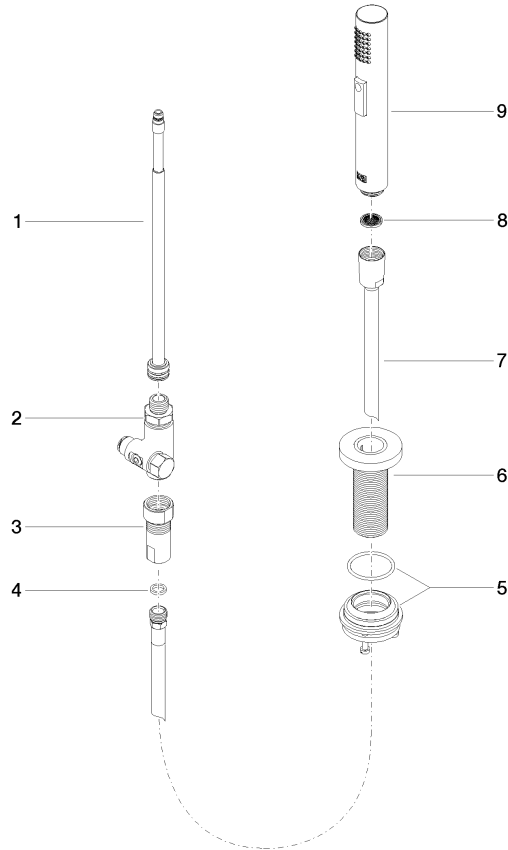
Belgaqua\_24-005-2 LGA\_38

## Rinsing spray set - Brushed Chrome

27 731 970

### Product version from 2/1/2023

Parts for other  
finishes can be found  
here: [Chrome](#)





Rinsing spray set - Brushed Chrome

27 731 970

Spare parts list

Product version from 2/1/2023

| No. | Item Number        | Name       | Quantity used | Delivery time |
|-----|--------------------|------------|---------------|---------------|
|     | 90 28 20 068 00 90 | connection | 9             | 2             |