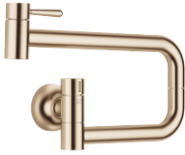


## VAIA POT FILLER Cold-water valve - Brushed Champagne (22kt Gold)

VAIA

30 805 809



- 500mm projection
- pivoting spout
- laminar flow
- cold water only
- max. flow 5.7 l/min at 3 bar flow pressure
- min. recess depth 125 mm
- max. recess depth 80 mm
- lead-free
- This product can help a building meet the requirements of Green Building Rating Systems, e.g. LEED®, BREEAM®, DGNB

	Brushed Champagne (22kt Gold)	30 805 809-46
	Chrome	30 805 809-00
	Brushed Platinum	30 805 809-06
	Platinum	30 805 809-08
	Durabass (23kt Gold)	30 805 809-09
	Dark Chrome	30 805 809-19
	Brushed Durabass (23kt Gold)	30 805 809-28
	Champagne (22kt Gold)	30 805 809-47
	Brushed Chrome	30 805 809-93
	Brushed Dark Platinum	30 805 809-99

### Required miscellaneous



#### **POT FILLER Concealed wall elbow** 35 087 970 90

- max. recess depth 125 mm
- min. recess depth 80 mm

### Flow rate chart



### Codes & Standards

DIN 4109

ISO 3822

Ü-Zeichen



## VAIA POT FILLER Cold-water valve - Brushed Champagne (22kt Gold)

---

VAIA

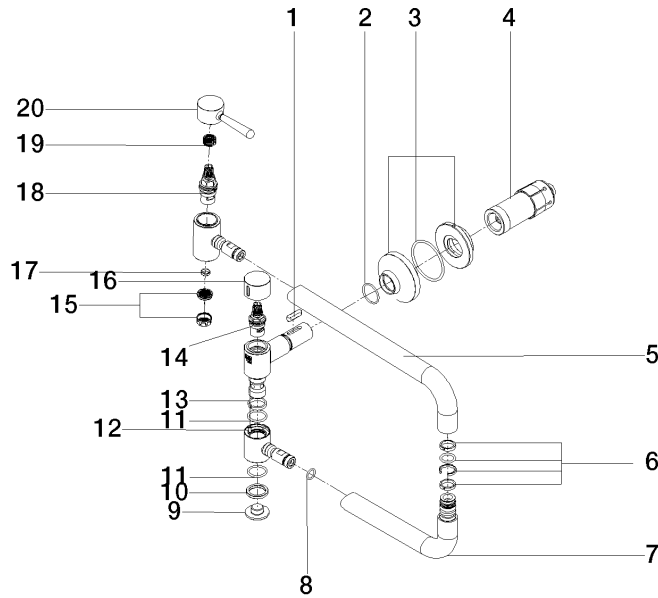
30 805 809

Certificates

---

LGA\_29

**Product version from 7/1/2023**





## VAIA POT FILLER Cold-water valve - Brushed Champagne (22kt Gold)

VAIA

30 805 809

### Spare parts list

#### Product version from 7/1/2023

No.	Item Number	Name	Quantity used	Delivery time
	90 16 04 001 00 90	spring	22	2