

## TARA Wall-mounted bridge mixer with extending spout - Chrome

31 151 892 Product version from 1/1/2025



- 365-545mm projection
- pivoting spout
- laminar flow
- 1/2" connection
- gauge 150 mm - 10 mm
- max. flow 8.3 l/min at 3 bar flow pressure
- lead-free
- This product can help a building meet the requirements of Green Building Rating Systems, e.g. LEED®, BREEAM®, DGNB

	Chrome	31 151 892-00
	Brushed Platinum	31 151 892-06
	Platinum	31 151 892-08
	Durabronze (23kt Gold)	31 151 892-09
	Dark Chrome	31 151 892-19
	Brushed Durabronze (23kt Gold)	31 151 892-28
	Brushed Bronze	31 151 892-42
	Brushed Champagne (22kt Gold)	31 151 892-46
	Champagne (22kt Gold)	31 151 892-47
	Brushed Chrome	31 151 892-93
	Brushed Dark Platinum	31 151 892-99

### Required miscellaneous



**Single holder for 15 mm PEX pipes -**  
• for 15 mm PEX pipes 29 022 970 90

### Required miscellaneous



**Single holder for 16 mm AluPEX pipes -**  
• for 16 mm AluPEX pipes 29 021 970 90

### Required miscellaneous

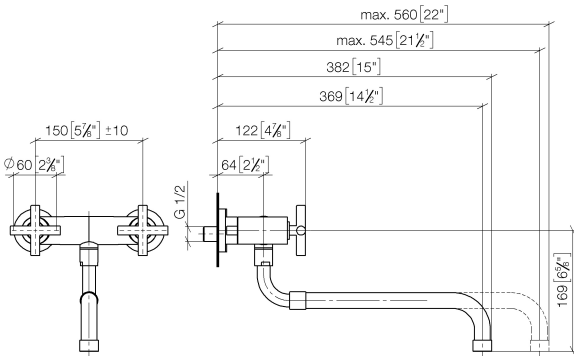


**Single holder for 12 mm and 15 mm copper pipes -**  
• for 12 mm and 15 mm copper pipes 29 020 970 90

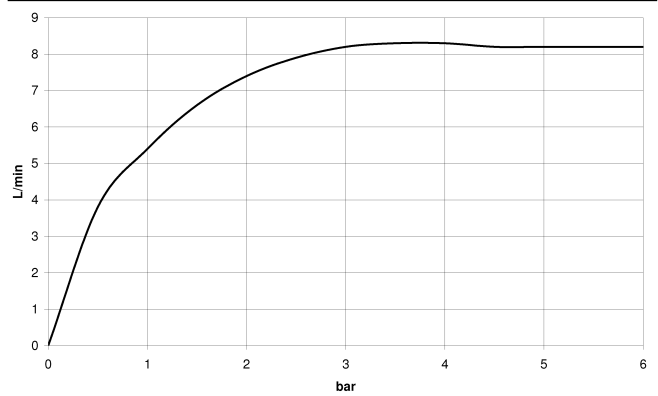
**TARA Wall-mounted bridge mixer with extending spout - Chrome**

31 151 892 Product version from 1/1/2025

mm [inches]



**Flow rate chart**



**Codes & Standards**

DIN 4109                      ISO 3822                      Ü-Zeichen



## TARA Wall-mounted bridge mixer with extending spout - Chrome

---

31 151 892 Product version from 1/1/2025

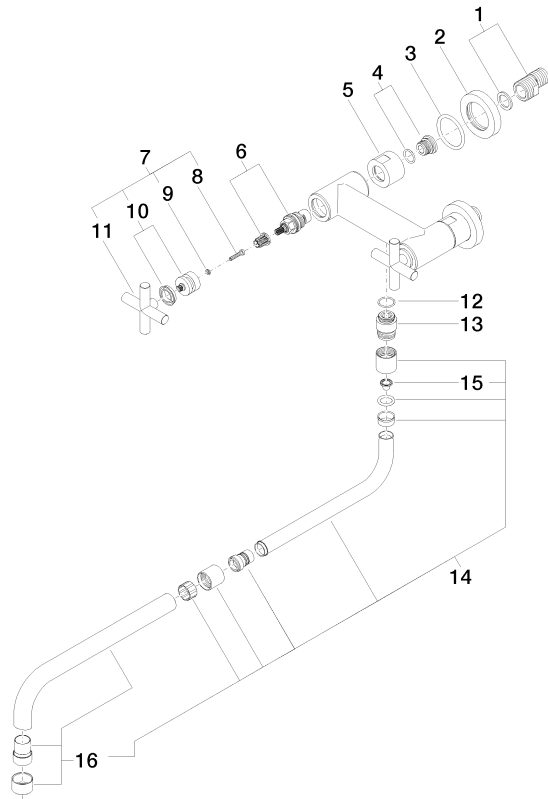
### Certificates

---

LGA\_19

## TARA Wall-mounted bridge mixer with extending spout - Chrome

31 151 892 Product version from 1/1/2025



### Spare parts list

No.	Item Number	Name	Quantity used	Delivery time
1	04 11 04 003 00 90	connection	2	2
2	09 27 89 004-00	rosette	2	10
3	09 14 10 041 90	seal	2	2
4	04 29 05 014 00 90	nipple	2	2
5	09 23 30 012-00	nut	2	10
6	90 90 03 131 00 90	top	2	2
7	90 20 89 010 10-00	handle	2	10
8	90 30 30 075 00 90	screw	2	2
9	90 30 11 029 00 90	disc	2	2
10	90 12 12 007 00-00	base	2	10
11	09 20 89 010-00	handle	2	60
12	90 14 10 032 00 90	seal	1	2
13	09 24 03 093 10-00	nipple	1	10
14	04 28 25 075 00-00	spout	1	30
15	09 29 03 027 90	insert	1	2
16	90 28 25 076 00-00	spout	1	10