

LOT Two-hole mixer with individual rosettes - Chrome

LOT

32 800 680



- 235mm projection
 - pivotable spout 360°
 - air-enriched flow
 - height of mixer 345 mm
 - height up to aerator 319 mm
 - individual rosette 55 x 55 mm
 - hole diameter spout 35 mm
 - single-lever mixer hole diameter 44 mm
 - max. flow 8 l/min at 3 bar flow pressure
 - lead-free
 - WRAS 1909073
 - This product can help a building meet the requirements of Green Building Rating Systems, e.g. LEED®, BREEAM®, DGNB
- Operating unit can be positioned freely.

| | | |
|--|--------------------------------|---------------|
| | Chrome | 32 800 680-00 |
| | Brushed Platinum | 32 800 680-06 |
| | Platinum | 32 800 680-08 |
| | Dark Chrome | 32 800 680-19 |
| | Brushed Durabronze (23kt Gold) | 32 800 680-28 |
| | Brushed Champagne (22kt Gold) | 32 800 680-46 |
| | Champagne (22kt Gold) | 32 800 680-47 |
| | Brushed Dark Platinum | 32 800 680-99 |

Recommended miscellaneous

Strainer waste with control handle 10 711 970-00
- Chrome



Recommended miscellaneous

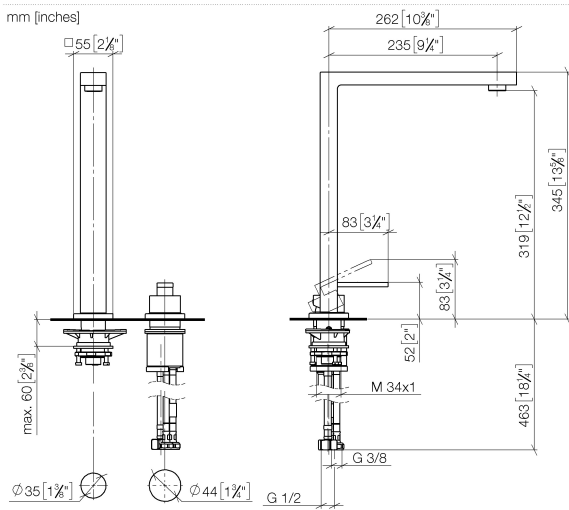
Dispenser with rosette - Chrome 82 439 970-00



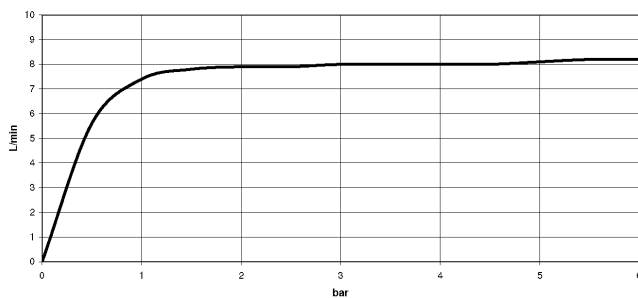
LOT Two-hole mixer with individual rosettes - Chrome

LOT

32 800 680



Flow rate chart



Codes & Standards

| | | | |
|---------------------------|--------------------------------|-----------------------------|------------|
| DIN 4109 | EN 817 | Executive Order no. 1007 | ISO 3822 |
| Scottish Water Byelaws | UK Water Supply Regulations | Ü-Zeichen | VA-Zeichen |



LOT Two-hole mixer with individual rosettes - Chrome

LOT

32 800 680

Certificates

| | | | | |
|--------|-----------|----------|--------|--------|
| LGA_18 | WRAS_1909 | GDV_0400 | LGA_18 | ETA_18 |
|--------|-----------|----------|--------|--------|

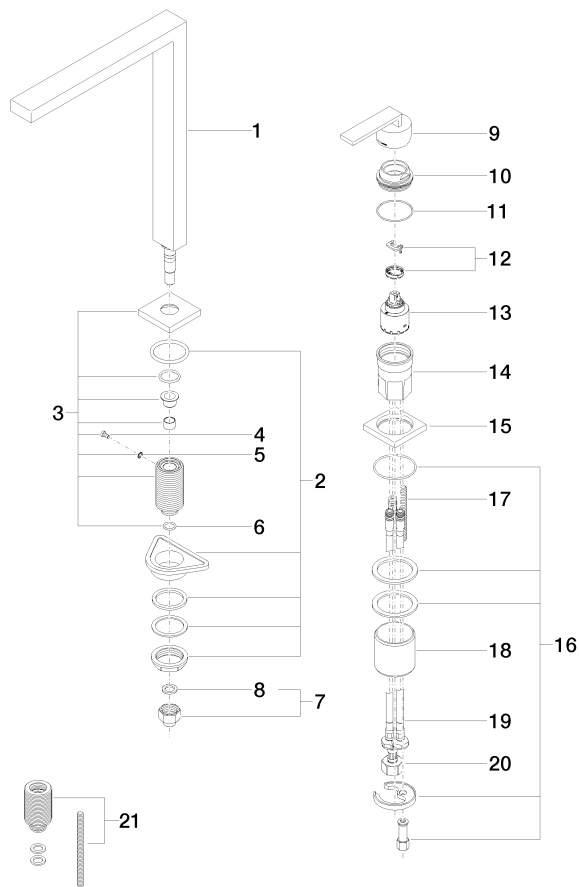
32 800 680

Product version from 5/31/2010 to 3/10/2021

Product version from 3/10/2021 to 5/10/2021

Product version from 5/10/2021

Product version from 6/1/2022





LOT Two-hole mixer with individual rosettes - Chrome

LOT

32 800 680

Spare parts list

Product version from 5/31/2010 to 3/10/2021

Product version from 3/10/2021 to 5/10/2021

Product version from 5/10/2021

Product version from 6/1/2022

| No. | Item Number | Name | Quantity used | Delivery time |
|-----|--------------------|-------|---------------|---------------|
| | 90 11 06 188 06-00 | spout | 22 | 10 |