

TARA ULTRA Two-hole mixer with individual rosettes - Platinum

TARA ULTRA

32 815 875



- 241mm projection
- pivotable spout 360°
- Optional swivel limiter available with swivel limiter set 12 820 970 90
- air-enriched flow
- max. flow 8 l/min at 3 bar flow pressure
- lead-free
- This product can help a building meet the requirements of Green Building Rating Systems, e.g. LEED®, BREEAM®, DGNB
- WRAS 240102014

Operating unit can be positioned freely.

| | | |
|--|--------------------------------|---------------|
| | Platinum | 32 815 875-08 |
| | Chrome | 32 815 875-00 |
| | Brushed Platinum | 32 815 875-06 |
| | Durabronze (23kt Gold) | 32 815 875-09 |
| | Dark Chrome | 32 815 875-19 |
| | Brushed Durabronze (23kt Gold) | 32 815 875-28 |
| | Matte Black | 32 815 875-33 |
| | Brushed Champagne (22kt Gold) | 32 815 875-46 |
| | Champagne (22kt Gold) | 32 815 875-47 |
| | Brushed Chrome | 32 815 875-93 |
| | Brushed Dark Platinum | 32 815 875-99 |

Recommended miscellaneous

Swivel limitation set - 12 820 970 90



Recommended miscellaneous

Dispenser with rosette - Platinum 82 444 970-08



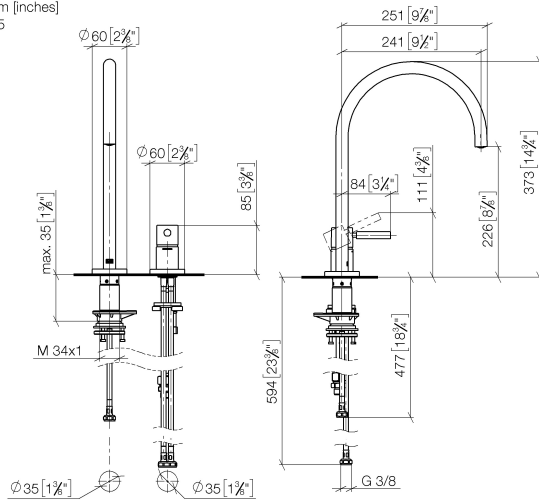
Recommended miscellaneous

Strainer waste with control handle - Platinum 10 710 970-08

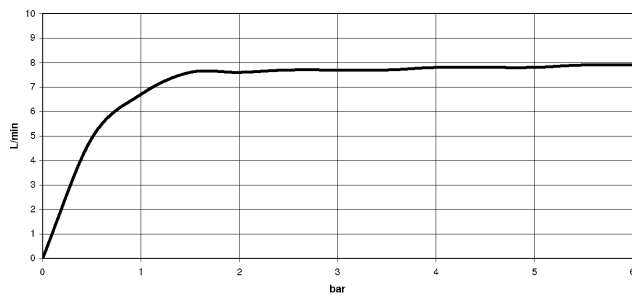


32 815 875

mm [inches]
1:5



Flow rate chart



Codes & Standards

DIN 4109

ISO 3822

Scottish Water Byelaws

UK Water Supply Regulations

Ü-Zeichen



TARA ULTRA Two-hole mixer with individual rosettes - Platinum

TARA ULTRA

32 815 875

Certificates

WRAS_240102 LGA_38





TARA ULTRA Two-hole mixer with individual rosettes - Platinum

TARA ULTRA

32 815 875

Spare parts list

| No. | Item Number | Name | Quantity used | Delivery time |
|-----|--------------------|-------|---------------|---------------|
| | 90 28 22 377 00-08 | spout | 18 | - |

Spare part can no longer be ordered, please order the replacement item