









LISSÉ Single-lever basin mixer with raised base with pop-up waste - Brushed Chrome

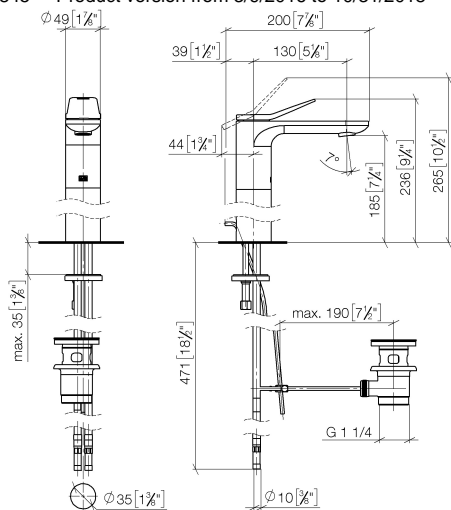
LISSÉ

33 506 845	Product version from 3/9/2016 to 10/31/2018		
	<ul style="list-style-type: none"> <li>• 130mm projection</li> <li>• fixed spout</li> <li>• circular, air-enriched flow</li> <li>• height of mixer 236 mm</li> <li>• height up to aerator 185 mm</li> <li>• hole diameter 35 mm</li> <li>• 2x screw-in M 8 x 1 pressure hose, leak-tested</li> <li>• max. flow 5.7 l/min</li> <li>• lead-free</li> <li>• This product can help a building meet the requirements of Green Building Rating Systems, e.g. LEED®, BREEAM®, DGNB</li> <li>• WRAS</li> </ul>		<div>Brushed Chrome</div> <div>33 506 845-93</div>
			<div>Chrome</div> <div>33 506 845-00</div>
			<div>Brushed Platinum</div> <div>33 506 845-06</div>
			<div>Dark Chrome</div> <div>33 506 845-19</div>
			<div>Brushed Light Gold</div> <div>33 506 845-27</div>
			<div>Matte Black</div> <div>33 506 845-33</div>
			<div>Brushed Dark Platinum</div> <div>33 506 845-99</div>
	Only suitable for basins with an overflow.		

# LISSÉ Single-lever basin mixer with raised base with pop-up waste - Brushed Chrome

LISSÉ

33 506 845 Product version from 3/9/2016 to 10/31/2018  
mm [inches]



Flow rate chart



## Codes & Standards

DIN 4109

Executive Order  
no. 1007

ISO 3822

Scottish Water  
Byelaws

UK Water Supply  
Regulations

Ü-Zeichen



## LISSE Single-lever basin mixer with raised base with pop-up waste - Brushed Chrome

LISSE

---

33 506 845 Product version from 3/9/2016 to 10/31/2018

Certificates and sustainability

---

LGA\_29

GDV\_0400

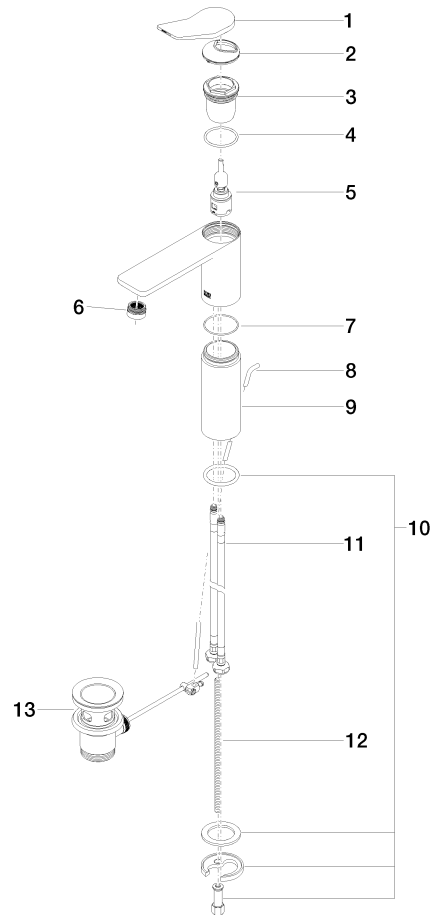
WRAS\_250402

## LISSÉ Single-lever basin mixer with raised base with pop-up waste - Brushed Chrome

LISSÉ

33 506 845 Product version from 3/9/2016 to 10/31/2018

Parts for other  
finishes can be found  
here: [Chrome](#)



### Spare parts list

No.	Item Number	Name	Quantity used	Delivery time
	2 09 28 30 034 90	cover	1.00	2
	9 09 28 22 305-93	sleeve	1.00	20
	6 90 23 01 161 01-93	aerator	1.00	20
	10 04 30 11 038 75 90	fixing set	1.00	2
	8 09 31 09 120-93	pull-rod	1.00	20
	12 09 31 11 000 90	pin	1.00	2
	7 09 14 10 108 90	seal	1.00	2
	5 90 15 05 042 01 90	cartridge	1.00	2
	1 90 20 84 020 00-93	handle	1.00	20
	3 09 23 10 123 90	nut	1.00	2
	11 04 30 04 101 00 90	hose	2.00	2
	4 09 14 10 038 90	seal	1.00	2
	13 90 11 01 001 00-93	pop-up waste	1.00	20