

## MEM Single-lever basin mixer without pop-up waste - Brushed Champagne (22kt Gold)

MEM

33 526 782 Product version from 5/5/2021



- 200mm projection
- fixed spout
- rectangular, air-enriched flow
- height of mixer 340 mm
- height up to aerator 216 mm
- hole diameter 35 mm
- 2x screw-in M 10 x 1 pressure hose, leak-tested
- max. flow 5.7 l/min
- lead-free
- WRAS
- This product can help a building meet the requirements of Green Building Rating Systems, e.g. LEED®, BREEAM®, DGNB

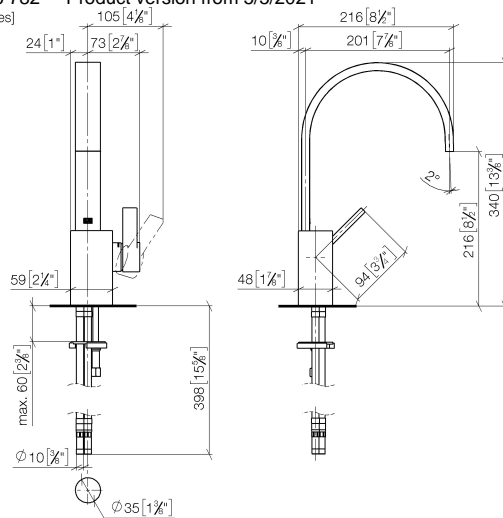
|   |                                |               |
|---|--------------------------------|---------------|
|  | Brushed Champagne (22kt Gold)  | 33 526 782-46 |
|  | Chrome                         | 33 526 782-00 |
|  | Brushed Platinum               | 33 526 782-06 |
|  | Platinum                       | 33 526 782-08 |
|  | Dark Chrome                    | 33 526 782-19 |
|  | Brushed Durabronze (23kt Gold) | 33 526 782-28 |
|  | Champagne (22kt Gold)          | 33 526 782-47 |
|  | Brushed Dark Platinum          | 33 526 782-99 |

# MEM Single-lever basin mixer without pop-up waste - Brushed Champagne (22kt Gold)

MEM

33 526 782 Product version from 5/5/2021

mm [inches]



## Flow rate chart



## Codes & Standards

DIN 4109

EN 817

Executive Order  
no. 1007

ISO 3822

Scottish Water  
Byelaws

UK Water Supply  
Regulations

Ü-Zeichen

VA-Zeichen



MEM Single-lever basin mixer without pop-up waste - Brushed Champagne  
(22kt Gold)

MEM

33 526 782    Product version from 5/5/2021

Certificates and sustainability

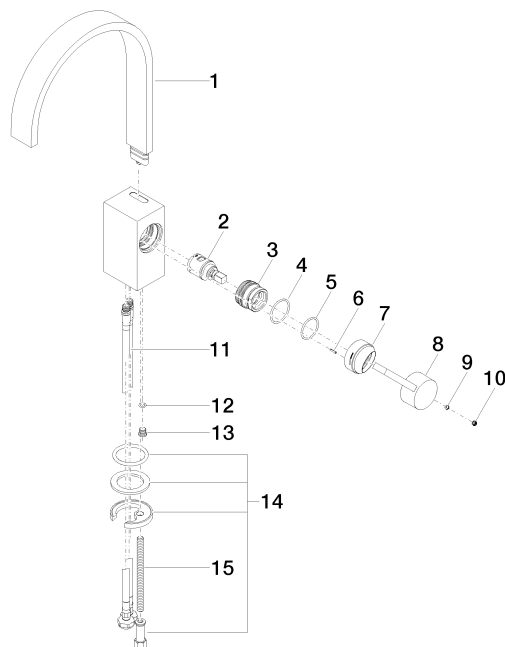
|        |        |          |             |
|--------|--------|----------|-------------|
| ETA_18 | LGA_28 | GDV_0400 | WRAS_240202 |
|--------|--------|----------|-------------|

# MEM Single-lever basin mixer without pop-up waste - Brushed Champagne (22kt Gold)

MEM

33 526 782 Product version from 5/5/2021

Parts for other  
finishes can be found  
here: [Chrome](#)



## Spare parts list

| No. | Item Number        | Name       | Quantity used | Delivery time |
|-----|--------------------|------------|---------------|---------------|
| 14  | 04 30 11 038 75 90 | fixing set | 1.00          | 2             |
| 7   | 09 28 30 028-46    | cover      | 1.00          | 30            |
| 13  | 09 31 20 027 10-00 | plug       | 1.00          | 10            |
| 4   | 09 14 10 137 90    | seal       | 1.00          | 2             |
| 15  | 09 31 11 012 90    | pin        | 1.00          | 2             |
| 11  | 04 30 04 104 00 90 | hose       | 2.00          | 2             |
| 6   | 09 31 11 152 90    | pin        | 1.00          | 2             |
| 8   | 09 20 78 057-46    | handle     | 1.00          | 30            |
| 2   | 90 15 05 042 00 90 | cartridge  | 1.00          | 2             |
| 3   | 09 24 04 288 90    | nut        | 1.00          | 2             |
| 12  | 09 14 10 132 90    | seal       | 1.00          | 2             |
| 1   | 90 28 22 152 01-46 | spout      | 1.00          | 30            |
| 9   | 90 31 11 063 00 90 | pin        | 1.00          | 2             |
| 5   | 90 14 10 063 00 90 | seal       | 1.00          | 2             |
| 10  | 90 31 20 109 00 90 | plug       | 1.00          | 2             |