

ELIO Single-lever mixer Pull-out - Brushed Bronze

ELIO

33 840 790 Product version from 6/1/2022



- 235mm projection
- pivotable spout 360°
- air-enriched flow
- height of mixer 337 mm
- height up to aerator 300 mm
- hole diameter 35 mm
- fabric braided hose 1500 mm
- max. flow 8.8 l/min at 3 bar flow pressure
- lead-free
- This product can help a building meet the requirements of Green Building Rating Systems, e.g. LEED®, BREEAM®, DGNB

Intrinsic protection against back flow.

	Brushed Bronze	33 840 790-42
	Chrome	33 840 790-00
	Brushed Platinum	33 840 790-06
	Platinum	33 840 790-08
	Dark Chrome	33 840 790-19
	Brushed Durabronze (23kt Gold)	33 840 790-28
	Brushed Champagne (22kt Gold)	33 840 790-46
	Champagne (22kt Gold)	33 840 790-47
	Brushed Chrome	33 840 790-93
	Brushed Dark Platinum	33 840 790-99

Recommended miscellaneous

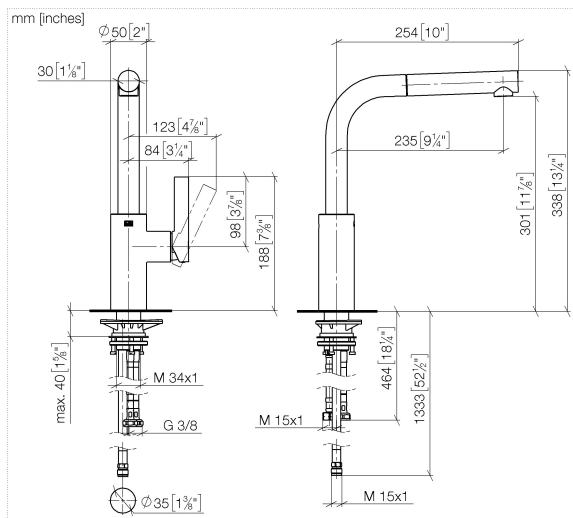
Strainer waste with control handle - Brushed Bronze 10 712 970-42



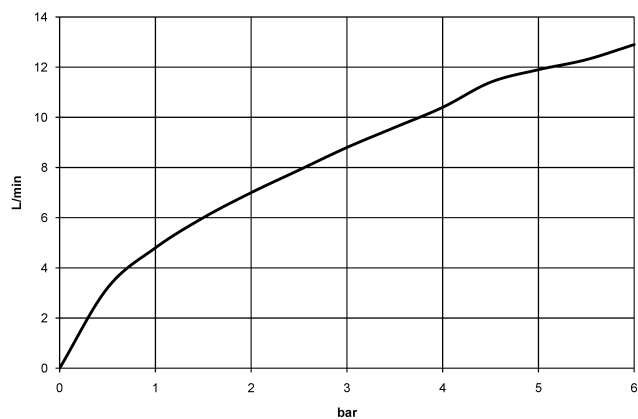
Recommended miscellaneous

Dispenser without rosette - Brushed Bronze 82 424 970-42





Flow rate chart



Codes & Standards

DIN 4109

EN 1717

Executive Order
no. 1007

ISO 3822

Ü-Zeichen



ELIO Single-lever mixer Pull-out - Brushed Bronze

ELIO

33 840 790 Product version from 6/1/2022

Certificates and sustainability

GDV_0400

LGA_19

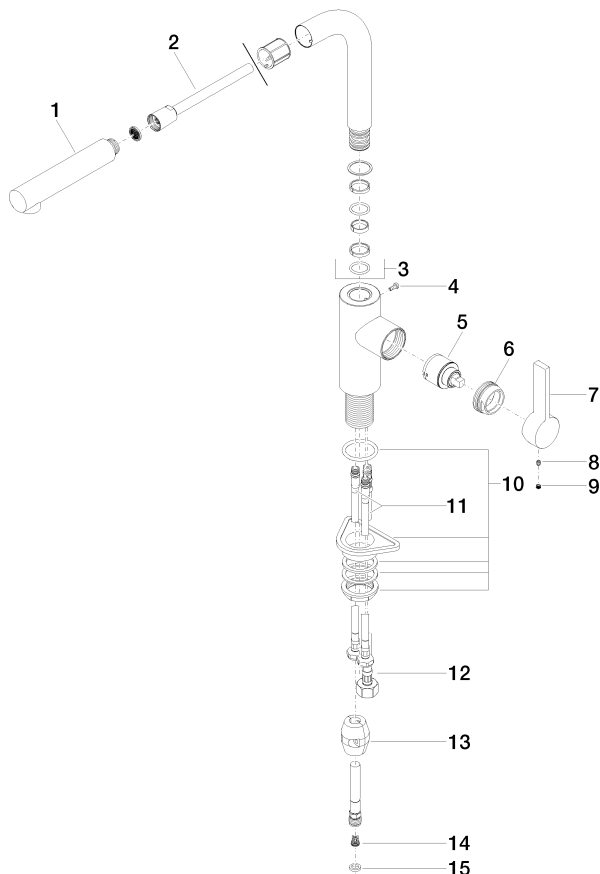
Belgaqua_22_277_2

ELIO Single-lever mixer Pull-out - Brushed Bronze

ELIO

33 840 790 Product version from 6/1/2022

Parts for other finishes can be found here: [Chrome](#)



Spare parts list

No.	Item Number	Name	Quantity used	Delivery time
	14 09 23 01 131 90	back-flow preventer	1.00	2
	10 04 23 10 044 02 90	fixing set	1.00	2
	6 09 24 04 141-42	nut	1.00	60
	7 09 20 79 040-42	handle	1.00	60
	1 04 12 11 106 00-42	shower	1.00	60
	12 04 30 04 029 00 90	hose	1.00	2
	5 90 15 05 045 00 90	cartridge	1.00	2
	3 90 28 22 186 00-42	spout	1.00	30
	2 90 30 02 062 00-42	hose	1.00	30
	15 90 14 20 019 00 90	seal	1.00	2
	13 04 21 50 005 00 90	accessories	1.00	2
	11 04 30 04 104 00 90	hose	2.00	2
	8 90 31 11 030 00 90	pin	1.00	2
	9 90 31 20 109 00 90	plug	1.00	2
	4 09 30 30 054 90	screw	1.00	2