



SERIES SPECIFIC Concealed single-lever mixer -

35 070 970 90



- lead-free, dezincification resistant
- 2x back flow preventer
- 2x female thread 1/2" connections
- 2x female thread 1/2" outlet
- 2x integrated supply stop
- dust cover
- sound and thermal insulation
- gauge 60 mm
- WRAS

Recommended miscellaneous

Extension 25 mm -

12 191 970 90

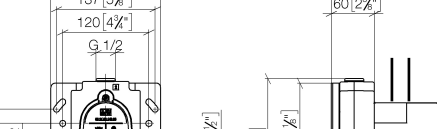


Recommended miscellaneous

Extension 25 mm -

12 190 970 90





Technical drawings of the 1000 Series 1/2" NPT Female, 1/2" NPT Male, and 1/2" NPT Male with 1/2" NPT Female Adapter. The drawings show the front and side views of the components with dimensions in inches and millimeters.

1000 Series 1/2" NPT Female:

- Overall height: 153 [6"]
- Top flange diameter: 137 [5 1/2"]
- Flange thickness: 120 [4 3/4"]
- Thread size: G 1/2"
- Bottom flange diameter: 100 [3 3/4"]
- Bottom flange thickness: 60 [2 1/2"]
- Bottom flange thread: G 1/2"
- Bottom flange to base distance: 38 [1 1/2"]
- Base diameter: 54 [2 1/8"]
- Base thread: G 1/2"
- Base to bottom flange distance: 60 [2 1/2"]

1000 Series 1/2" NPT Male:

- Overall height: 189 [7 1/2"]
- Top flange diameter: 60 [2 1/4"]
- Thread size: 1/2" NPT
- Thread length: 154 [6 1/8"]
- Thread to base distance: 215 [8 5/8"]
- Base diameter: 32 [1 1/8"]
- Base thread: min. 80 [3 1/8"]
- Base to bottom flange distance: max. 105 [4 1/8"]
- Bottom flange diameter: 106 [4 1/8"]

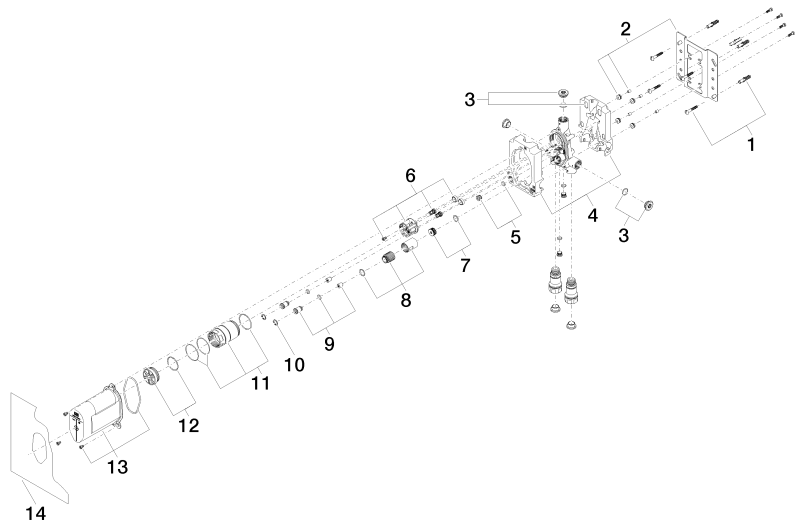
1000 Series 1/2" NPT Male with 1/2" NPT Female Adapter:

- Overall height: 189 [7 1/2"]
- Top flange diameter: 60 [2 1/4"]
- Thread size: 1/2" NPT
- Thread length: 154 [6 1/8"]
- Thread to base distance: 215 [8 5/8"]
- Base diameter: 32 [1 1/8"]
- Base thread: min. 80 [3 1/8"]
- Base to bottom flange distance: max. 105 [4 1/8"]
- Bottom flange diameter: 106 [4 1/8"]

WRAS_2207

SERIES SPECIFIC Concealed single-lever mixer -

35 070 970 90



Spare parts list

No.	Item Number	Name	Quantity used	Delivery time
1	04 30 31 024 01 90	fixing set	2	2
2	04 17 20 128 00 90	holder	1	2
3	04 31 20 006 00 90	plug	2	2
4	09 11 11 058 90	accessories	1	2
5	04 31 20 039 11 90	plug	1	2
6	90 18 40 151 00 90	insert	1	2
7	90 31 20 098 00 90	plug	1	2
8	90 17 01 189 00 90	sleeve	1	2
9	04 24 03 223 00 90	insert	2	2
10	09 16 01 014 90	ring	2	2
11	90 17 01 187 00 90	sleeve	1	2
12	04 31 20 100 00 90	plug	1	2
13	90 21 02 148 00 90	cap	1	2
14	04 14 03 155 00 90	gasket kit	1	2