

Concealed single-lever mixer with integrated shower connection with shower set without hand shower - Brushed Dark Platinum

IMO

36 013 970



Fits: IMO, MEM, CL.1

- cover plate 80 x 80 mm
- metal shower hose 1750mm with integrated anti-twist protection
- slide bar
- Pipe diameter 18 mm
- WRAS 2011027

This article does not include a hand shower!

Intrinsic protection against back flow.

Article cannot be extended, please check the depth of the installation location!

This article does not include a hand shower!

Intrinsic protection against back flow.

Article cannot be extended, please check the depth of the installation location!

	Brushed Dark Platinum	36 013 970-99
	Chrome	36 013 970-00
	Brushed Platinum	36 013 970-06
	Platinum	36 013 970-08
	Dark Chrome	36 013 970-19
	Brushed Durabronze (23kt Gold)	36 013 970-28
	Matte Black	36 013 970-33
	Brushed Champagne (22kt Gold)	36 013 970-46
	Champagne (22kt Gold)	36 013 970-47
	Brushed Chrome	36 013 970-93

Required miscellaneous

- | | | |
|--|---|---------------|
| | Concealed wall mounting -
• max. recess depth 103 mm
• min. recess depth 78 mm | 35 003 970 90 |
|--|---|---------------|

Required miscellaneous

- | | | |
|--|---|-----------------------|
| | Hand shower FlowReduce -
Brushed Dark Platinum | 28 016 979-99
0010 |
|--|---|-----------------------|

Required miscellaneous

- | | | |
|--|---|-----------------------|
| | Hand shower FlowReduce -
Brushed Dark Platinum | 28 012 979-99
0010 |
|--|---|-----------------------|

Required miscellaneous

- | | | |
|--|--|---------------|
| | Hand shower - Brushed Dark
Platinum | 28 017 979-99 |
|--|--|---------------|

Required miscellaneous

- | | | |
|--|--|---------------|
| | Hand shower - Brushed Dark
Platinum | 28 016 979-99 |
|--|--|---------------|

Required miscellaneous

- | | | |
|--|--|---------------|
| | Hand shower - Brushed Dark
Platinum | 28 012 979-99 |
|--|--|---------------|

Required miscellaneous

- | | | |
|--|--|---------------|
| | Hand shower - Brushed Dark
Platinum | 28 018 979-99 |
|--|--|---------------|

Required miscellaneous

- | | | |
|--|---|-----------------------|
| | Hand shower FlowReduce -
Brushed Dark Platinum | 28 018 979-99
0010 |
|--|---|-----------------------|

Required miscellaneous

- | | | |
|--|---|---------------|
| | SERIES-VARIOUS Hand shower -
Brushed Dark Platinum | 28 029 979-99 |
|--|---|---------------|

Required miscellaneous

- | | | |
|--|--|-----------------------|
| | SERIES-VARIOUS Hand shower
FlowReduce - Brushed Dark
Platinum | 28 029 979-99
0010 |
|--|--|-----------------------|

Required miscellaneous

- | | | |
|--|--|-----------------------|
| | SERIES-VARIOUS Hand shower
FlowReduce - Brushed Dark
Platinum | 28 025 979-99
0010 |
|--|--|-----------------------|

Required miscellaneous

- | | | |
|--|--|-----------------------|
| | SERIES-VARIOUS Hand shower
FlowReduce - Brushed Dark
Platinum | 28 027 979-99
0010 |
|--|--|-----------------------|

Concealed single-lever mixer with integrated shower connection with shower set without hand shower - Brushed Dark Platinum

IMO

36 013 970

mm [inches]



Codes & Standards

DIN 4109

EN 1717

ISO 3822

Scottish Water
Byelaws

UK Water Supply
Regulations

Ü-Zeichen

Certificates

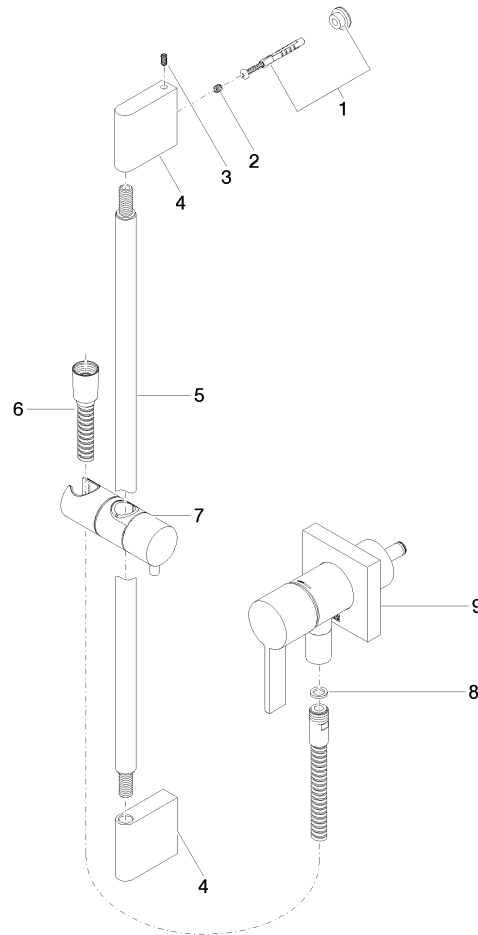
Belgaqua_21-025-2 LGA_29

WRAS_2011

Concealed single-lever mixer with integrated shower connection with shower set without hand shower - Brushed Dark Platinum

IMO

36 013 970





Concealed single-lever mixer with integrated shower connection with shower set without hand shower - Brushed Dark Platinum

IMO

36 013 970

Spare parts list

No.	Item Number	Name	Quantity used	Delivery time
	05 17 20 726 02 90	fixing set	12	2