




xTOOL Concealed thermostat without volume control 1/2" - Brushed Dark Platinum

SERIES SPECIFIC

36 501 979 Product version up to 2/2/2021



- cover plate Ø 124 mm
- temperature control handle with safety limit stop at 38°C
- thermostat cartridge
- WRAS

| | | |
|---|-------------------------------|---------------|
|  | Brushed Dark Platinum | 36 501 979-99 |
|  | Chrome | 36 501 979-00 |
|  | Brushed Platinum | 36 501 979-06 |
|  | Platinum | 36 501 979-08 |
|  | Durabrand (23kt Gold) | 36 501 979-09 |
|  | Dark Chrome | 36 501 979-19 |
|  | Light Gold | 36 501 979-26 |
|  | Brushed Light Gold | 36 501 979-27 |
|  | Brushed Durabrand (23kt Gold) | 36 501 979-28 |
|  | Matte Black | 36 501 979-33 |
|  | Brushed Dark Brass | 36 501 979-39 |
|  | Brushed Bronze | 36 501 979-42 |
|  | Brushed Champagne (22kt Gold) | 36 501 979-46 |
|  | Champagne (22kt Gold) | 36 501 979-47 |
|  | Brushed Chrome | 36 501 979-93 |

Required miscellaneous



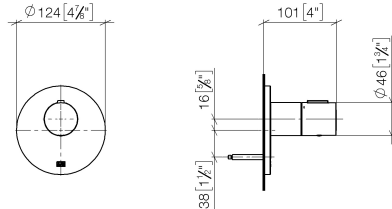
- xTOOL Concealed thermostat module without volume control -**
- max. recess depth 110 mm
 - min. recess depth 85 mm

35 503 970 90

xTOOL Concealed thermostat without volume control 1/2" - Brushed Dark Platinum

SERIES SPECIFIC

36 501 979 Product version up to 2/2/2021
mm [inches]



Flow rate chart



Codes & Standards

DIN 4109

EN 1111

ISO 3822

Scottish Water
Byelaws

UK Water Supply
Regulations

Ü-Zeichen

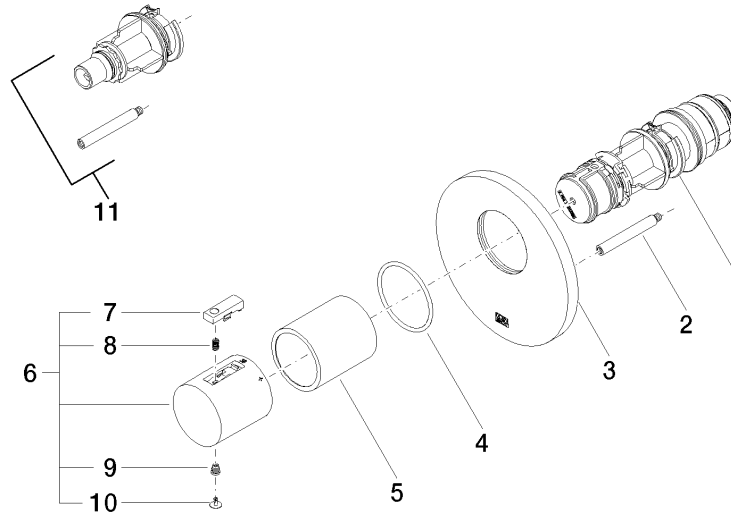


xTOOL Concealed thermostat without volume control 1/2" - Brushed Dark
Platinum

SERIES SPECIFIC

36 501 979 Product version up to 2/2/2021
Certificates and sustainability

| | | | |
|-----------|---------------------|--------|--------|
| WRAS_2011 | DVGW_DW- 6512DN0 | LGA_29 | LGA_29 |
|-----------|---------------------|--------|--------|



Spare parts list

| No. | Item Number | Name | Quantity used | Delivery time |
|-----|--------------------|-------------------|---------------|---------------|
| 3 | 09 11 02 162-99 | cover | 1.00 | 60 |
| 8 | 90 16 02 027 00 90 | spring | 1.00 | 2 |
| 11 | 12 178 970 90 | Extension 46 mm - | 1.00 | 2 |
| 6 | 90 17 33 004 00-99 | handle | 1.00 | 20 |
| 4 | 90 14 10 049 00 90 | seal | 1.00 | 2 |
| 2 | 90 31 09 095 00 90 | bar | 1.00 | 2 |
| 5 | 90 21 02 112 00-99 | sleeve | 1.00 | 20 |
| 9 | 90 30 30 136 00 90 | screw | 1.00 | 2 |
| 10 | 90 31 20 049 00-13 | plug | 1.00 | 30 |
| 7 | 90 21 33 011 00-13 | handle | 1.00 | 2 |
| 1 | 90 15 02 065 00 90 | cartridge | 1.00 | 2 |