

xTOOL Concealed thermostat without volume control 3/4" - Chrome

SERIES SPECIFIC

36 503 979
Product version up to 1/1/2022



- cover plate Ø 124 mm
- temperature control handle with safety limit stop at 38°C
- thermostat cartridge
- WRAS

|   |                               |               |
|---|-------------------------------|---------------|
|    | Chrome                        | 36 503 979-00 |
|    | Brushed Platinum              | 36 503 979-06 |
|    | Platinum                      | 36 503 979-08 |
|    | Durabrand (23kt Gold)         | 36 503 979-09 |
|    | Dark Chrome                   | 36 503 979-19 |
|    | Light Gold                    | 36 503 979-26 |
|    | Brushed Light Gold            | 36 503 979-27 |
|    | Brushed Durabrand (23kt Gold) | 36 503 979-28 |
|    | Matte Black                   | 36 503 979-33 |
|   | Brushed Bronze                | 36 503 979-42 |
|  | Brushed Champagne (22kt Gold) | 36 503 979-46 |
|  | Champagne (22kt Gold)         | 36 503 979-47 |
|  | Brushed Chrome                | 36 503 979-93 |
|  | Brushed Dark Platinum         | 36 503 979-99 |

Required miscellaneous

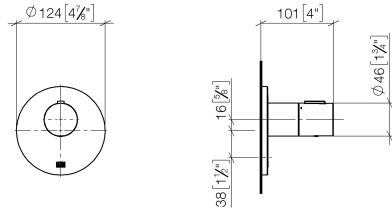


- xTOOL Concealed thermostat module without volume control -**
35 503 970 90

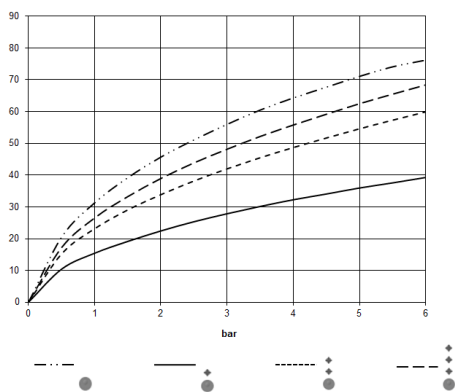
  - max. recess depth 110 mm
  - min. recess depth 85 mm

36 503 979 Product version up to 1/1/2022

mm [inches]



### Flow rate chart



### Codes & Standards

DIN 4109

EN 1111

ISO 3822

Scottish Water  
Byelaws

UK Water Supply  
Regulations

Ü-Zeichen



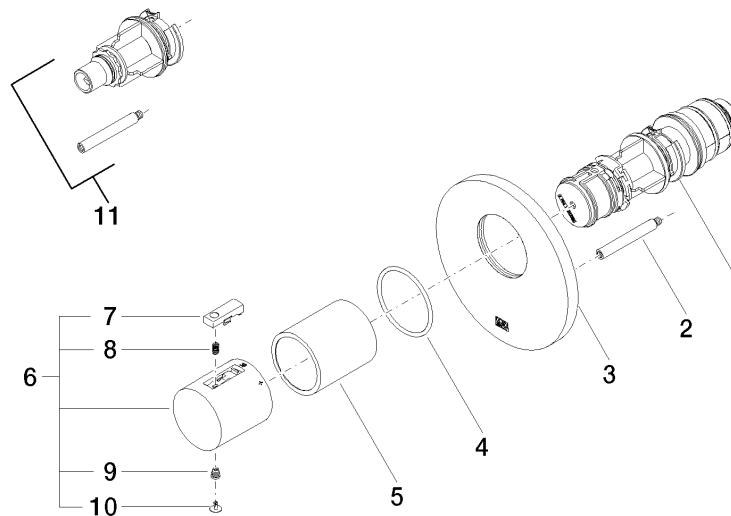
xTOOL Concealed thermostat without volume control 3/4" - Chrome

SERIES SPECIFIC

36 503 979 Product version up to 1/1/2022

Certificates and sustainability

|           |                 |        |        |
|-----------|-----------------|--------|--------|
| WRAS_2011 | DVGW_DW-6512DN0 | LGA_29 | LGA_29 |
|-----------|-----------------|--------|--------|



## Spare parts list

| No. | Item Number        | Name              | Quantity used | Delivery time |
|-----|--------------------|-------------------|---------------|---------------|
| 8   | 90 16 02 027 00 90 | spring            | 1.00          | 2             |
| 3   | 09 11 02 162-00    | cover             | 1.00          | 60            |
| 6   | 90 17 33 004 00-00 | handle            | 1.00          | 10            |
| 11  | 12 178 970 90      | Extension 46 mm - | 1.00          | 2             |
| 2   | 90 31 09 095 00 90 | bar               | 1.00          | 2             |
| 10  | 90 31 20 049 00-00 | plug              | 1.00          | 10            |
| 4   | 90 14 10 049 00 90 | seal              | 1.00          | 2             |
| 5   | 90 21 02 112 00-00 | sleeve            | 1.00          | 10            |
| 9   | 90 30 30 136 00 90 | screw             | 1.00          | 2             |
| 7   | 90 21 33 011 00-13 | handle            | 1.00          | 2             |
| 1   | 90 15 02 063 00 90 | cartridge         | 1.00          | 2             |