

## Wall valve clockwise closing 1/2" - Brushed Champagne (22kt Gold)

SERIES SPECIFIC

36 607 740 Product version from 7/1/2023



- without rosette
- handle Ø 60mm
- without marking
- head part with cut-to-length spindle and sleeve
- WRAS

|   |                                |               |
|---|--------------------------------|---------------|
|    | Brushed Champagne (22kt Gold)  | 36 607 740-46 |
|    | Chrome                         | 36 607 740-00 |
|    | Brushed Platinum               | 36 607 740-06 |
|    | Dark Chrome                    | 36 607 740-19 |
|    | Light Gold                     | 36 607 740-26 |
|    | Brushed Light Gold             | 36 607 740-27 |
|    | Brushed Durabronze (23kt Gold) | 36 607 740-28 |
|    | Matte Black                    | 36 607 740-33 |
|    | Brushed Dark Brass             | 36 607 740-39 |
|   | Brushed Bronze                 | 36 607 740-42 |
|  | Champagne (22kt Gold)          | 36 607 740-47 |
|  | Brushed Chrome                 | 36 607 740-93 |
|  | Brushed Dark Platinum          | 36 607 740-99 |

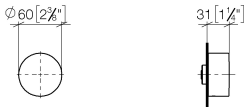


Wall valve clockwise closing 1/2" - Brushed Champagne (22kt Gold)

SERIES SPECIFIC

36 607 740 Product version from 7/1/2023

mm [inches]



Codes & Standards

|                |                        |                             |           |
|----------------|------------------------|-----------------------------|-----------|
| ASME A112.18.1 | cUPC                   | DIN 4109                    | EN 1111   |
| ISO 3822       | Scottish Water Byelaws | UK Water Supply Regulations | Ü-Zeichen |

Certificates and sustainability

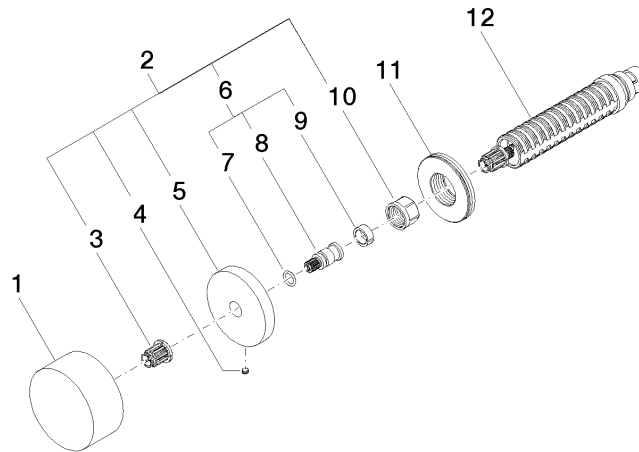
|              |        |        |           |                 |
|--------------|--------|--------|-----------|-----------------|
| WRAS_2011    | LGA_38 | LGA_29 | WRAS_2010 | DVGW_DW-6512DN0 |
| IAPMO_4976 ( |        |        |           |                 |

## Wall valve clockwise closing 1/2" - Brushed Champagne (22kt Gold)

SERIES SPECIFIC

36 607 740 Product version from 7/1/2023

Parts for other  
finishes can be found  
here: [Chrome](#)



### Spare parts list

| No.  | Item Number        | Name       | Quantity used | Delivery time |
|--|--------------------|------------|---------------|---------------|
| 5  | 09 27 74 004-46    | rosette    | 1.00          | 60            |
| 11   | 09 30 01 107 90    | sleeve     | 1.00          | 2             |
| 12   | 90 90 03 143 00 90 | top        | 1.00          | 2             |
| 9  | 90 14 15 020 03 90 | ring       | 1.00          | 2             |
| 7  | 90 14 10 060 00 90 | seal       | 1.00          | 2             |
| 1  | 09 20 74 004-46    | handle     | 1.00          | 60            |
| 6  | 04 29 06 020 00-00 | spindle    | 1.00          | 10            |
| 10   | 90 23 30 023 00 90 | nut        | 1.00          | 2             |
| 3  | 90 12 12 002 00 90 | fixing cap | 1.00          | 2             |
| 4  | 09 31 11 055 90    | pin        | 1.00          | 2             |
| 8  | 09 29 06 020-46    | spindle    | 1.00          | -             |
| Spare part can no longer be ordered, please order the replacement item |                    |            |               |               |
| 2  | 04 27 74 004 00-46 | rosette    | 1.00          | 60            |