

41 620 979



- exposed trim parts
- Rain panel with 3 different flow modes
- AQUACIRCLE RAIN: Circular rain curtain, max. flow rate 12 l/min (at 3 bar)
- TEMPEST RAIN: Natural rain, max. flow rate 10 l/min (at 3 bar)
- Queen's Collar: rounded cascade, max. 24 l/min
- with anti-scale system
- Outer diameter 1240 mm, opening diameter 450 mm

Technical data:

- Weight 22.5 kg
- Matt white cover, RAL 9003

Electric:

Ambient lighting

- LED colour temperature approx. 2700 K
- Bulbs protected against splashing water
- Technology: LED, not dimmable
- Provided by customer: Light switch

Environment

Planning tips:

- Not suitable for use in a steam room.
- Not suitable for outdoor use.
- Not suitable for use in chlorinated or salty environments.
- Comply with the protection zone regulations as defined in DIN VDE 0100, Part 701 (IEC 60364-7-701).

Notes:

- Control elements not included among the items supplied

Rain panel cover for adaptation to ceiling colour available in all RAL colours, price and delivery time on request

Rain panel cover for adaptation to ceiling colour available in all RAL colours, price and delivery time on request

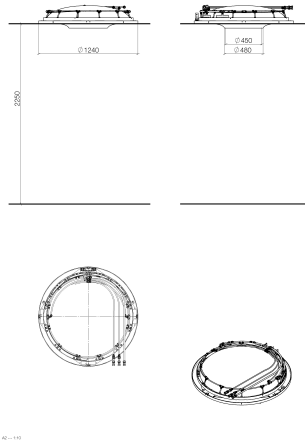
Required miscellaneous



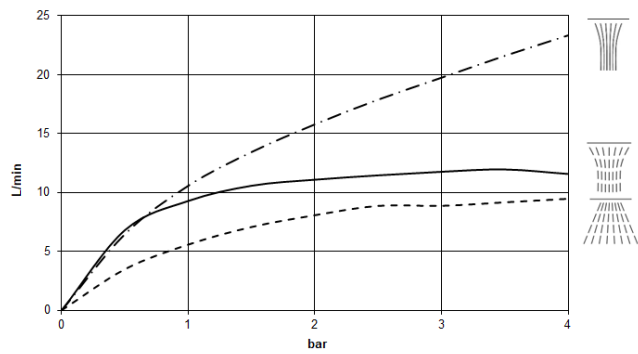
AQUAMOON Concealed ceiling installation box - 35 620 970 90

- Ceiling installation enclosure 1356 x 1356 x 290 mm
- concealed rough parts
- Opening diameter 1252 mm
- min. recess depth 290 mm

41 620 979



Flow rate chart



Codes & Standards

DIN 4109

ISO 3822

Ü-Zeichen



AQUAMOON Rain panel - Matte White

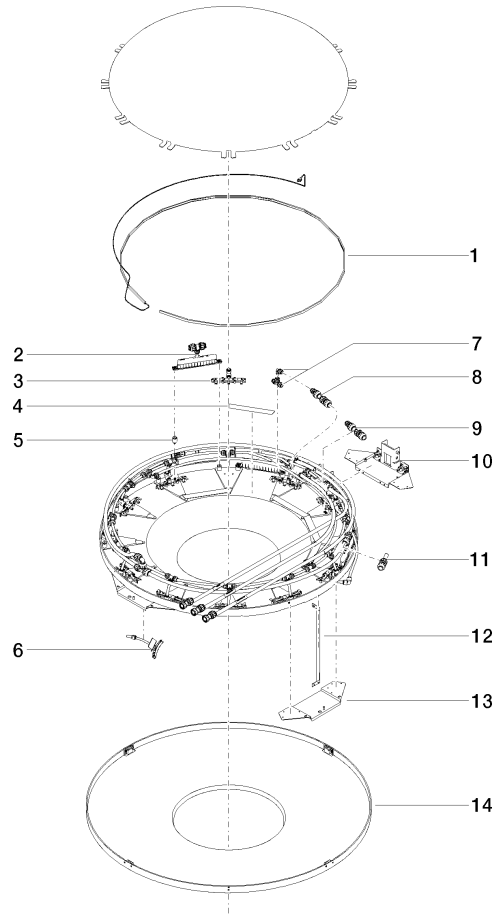
SERIES-VARIOUS

41 620 979

Certificates and sustainability

LGA_29

41 620 979



Spare parts list

No.	Item Number	Name	Quantity used	Delivery time
	13 90 17 20 216 00 90	holder	3.00	2
	7 90 24 04 321 00 90	threaded connector	1.00	2
	1 90 10 01 183 00 90	lamp	1.00	2
	12 90 17 20 217 00 90	holder	4.00	2
	6 90 17 09 057 00 90	jet module	12.00	2
	4 90 17 20 221 00 90	holder	5.00	2
	8 90 24 04 346 00 90	connection AQUACIRCLE	1.00	2
	2 90 17 09 058 00 90	jet module	5.00	2
	14 90 11 02 325 00 90	cover	1.00	2
	10 90 17 20 211 00 90	joint	1.00	2
	3 90 17 09 056 00 90	jet module	12.00	2
	11 90 24 04 314 01 90	connection QUEENSCOLLAR	1.00	2
	5 90 18 40 222 00 90	adaptor	24.00	2
	9 90 24 04 314 00 90	connection TEMPEST	1.00	60