

SERIES-VARIOUS AQUAHALO Rain panel - Brushed Champagne (22kt Gold)

41 750 979 Product version from 4/1/2024



- exposed trim parts
- Rain panel with 3 different flow modes
- AQUACIRCLE RAIN: Circular rain curtain, max. flow rate 14 l/min (at 3 bar)
- TEMPEST RAIN: Natural rain, max. flow rate 9 l/min (at 3 bar)
- DIAMOND RAIN: Ring of rain, max. flow rate 6.8 l/min (at 3 bar)
- Outer diameter: 605 mm, opening diameter: 465 mm
- Weight: 6 kg
- Recommended control element: xTool

Separate LED power supply

Input LED power supply

- Input 100-240V AC 50-60Hz

Output LED power supply

- 350mA (CC)

Output specification LED power supply

- SELV (Safety Extra Low Voltage)
- Class 2

Ceiling module power supply

- 350mA (CC)
- Supply pipe 7 m



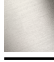


Spot lighting

- LED colour temperature approx. 3000 K
- Bulbs protected against splashing water
- Contains energy efficiency class bulbs
- Technology: LED, not dimmable
- Provided by customer: Light switch

Environment

- Not suitable for outdoor use.
- Not suitable for use in a steam room.
- Not suitable for use in chlorinated or salty environments.
- Comply with the protection zone regulations as defined in DIN VDE 0100, Part 701 (IEC 60364-7-701).

Pre-assembly kit for three-way diverter included

| | | |
|---|-------------------------------|---------------|
|  | Brushed Champagne (22kt Gold) | 41 750 979-46 |
|  | Chrome | 41 750 979-00 |
|  | Brushed Platinum | 41 750 979-06 |
|  | Matte Black | 41 750 979-33 |
|  | Champagne (22kt Gold) | 41 750 979-47 |

Required miscellaneous

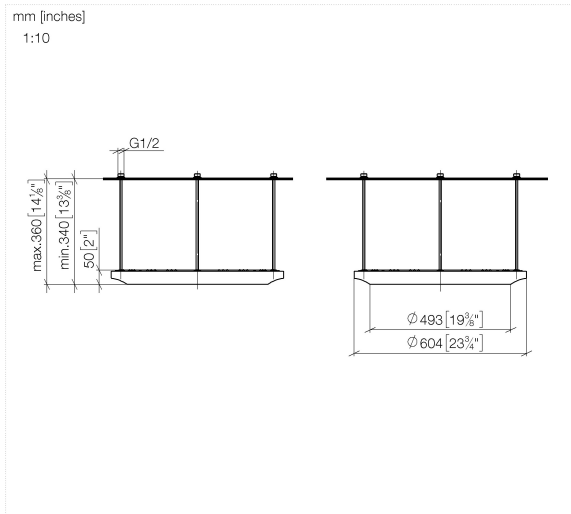


SERIES-VARIOUS AQUAHALO 35 750 970-46 Concealed ceiling installation box - Brushed Champagne (22kt Gold)

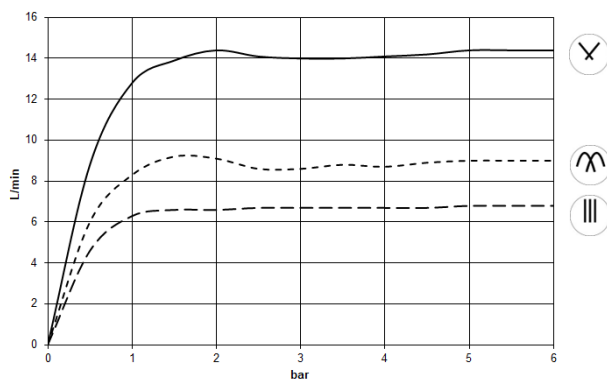
- concealed rough parts
- Ceiling installation enclosure 605 x 605 x 95 mm
- Weight: 10 kg
- min. recess depth mm
- Pre-assembly kit for three-way diverter included

SERIES-VARIOUS AQUAHALO Rain panel - Brushed Champagne (22kt Gold)

41 750 979 Product version from 4/1/2024



Flow rate chart



Codes & Standards

DIN 4109

ISO 3822

Ü-Zeichen



SERIES-VARIOUS AQUAHALO Rain panel - Brushed Champagne (22kt Gold)

41 750 979 Product version from 4/1/2024

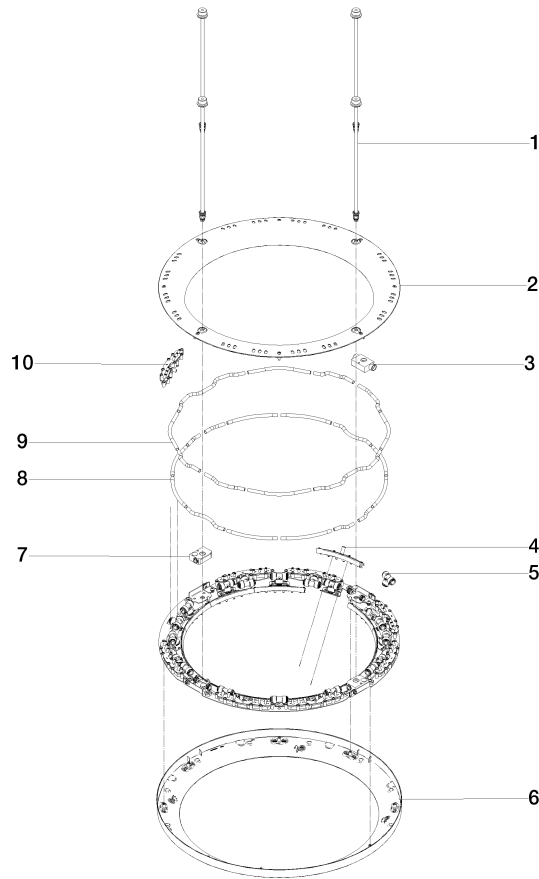
Certificates

LGA_38

SERIES-VARIOUS AQUAHALO Rain panel - Brushed Champagne (22kt Gold)

41 750 979 Product version from 4/1/2024

Parts for other
finishes can be found
here: [Chrome](#)



Spare parts list

| No. | Item Number | Name | Quantity used | Delivery time |
|--|--------------------|--------------------|---------------|---------------|
| 1 | 90 28 22 605 01-46 | distributor | 4 | 30 |
| 2 | 90 12 05 087 00-46 | casing | 1 | 30 |
| 3 | 90 24 03 535 01 90 | distributor | 2 | 10 |
| 4 | 90 17 09 060 01 90 | jet module | 12 | 2 |
| 5 | 90 24 04 384 00 90 | adaptor | 20 | - |
| Spare part can no longer be ordered, please order the replacement item | | | | |
| 6 | 90 12 05 088 00-46 | casing | 1 | 30 |
| 7 | 90 24 03 535 00 90 | distributor | 2 | 2 |
| 8 | 90 30 03 118 00 90 | hose | 1 | - |
| Spare part can no longer be ordered, please order the replacement item | | | | |
| 9 | 90 30 03 117 00 90 | hose | 1 | - |
| Spare part can no longer be ordered, please order the replacement item | | | | |
| 10 | 90 17 09 061 01 90 | jet module TEMPEST | 8 | 2 |