

Tissue holder with cover - Brushed Champagne (22kt Gold)
SERIES SPECIFIC

83 510 979
Product version from 7/1/2023

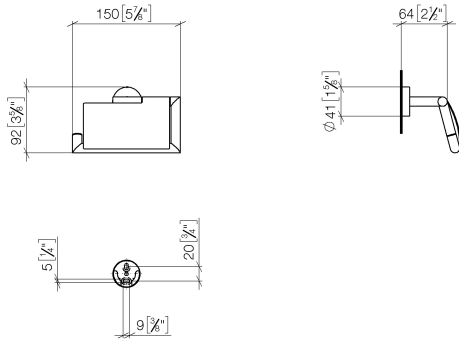


- width 150mm
- height 95 mm
- rosette Ø 40 mm
- 40mm projection

	Brushed Champagne (22kt Gold)	83 510 979-46
	Chrome	83 510 979-00
	Brushed Platinum	83 510 979-06
	Dark Chrome	83 510 979-19
	Light Gold	83 510 979-26
	Brushed Light Gold	83 510 979-27
	Matte Black	83 510 979-33
	Brushed Dark Brass	83 510 979-39
	Brushed Bronze	83 510 979-42
	Champagne (22kt Gold)	83 510 979-47
	Brushed Chrome	83 510 979-93
	Brushed Dark Platinum	83 510 979-99

83 510 979 Product version from 7/1/2023

mm [inches]

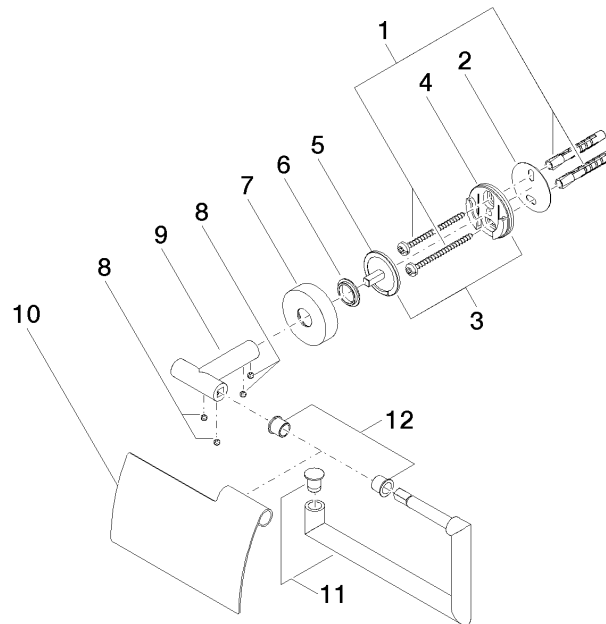


## Tissue holder with cover - Brushed Champagne (22kt Gold)

SERIES SPECIFIC

83 510 979 Product version from 7/1/2023

Parts for other  
finishes can be found  
here: [Chrome](#)



### Spare parts list

No.	Item Number	Name	Quantity used	Delivery time
	2 05 30 11 519 00 90	disc	1.00	2
	10 08 11 02 514-46	lid	1.00	30
	9 05 17 97 562 01-46	holder	1.00	60
	5 08 17 97 559 90	holder	1.00	2
	6 08 30 11 516 90	ring	1.00	2
	7 08 27 97 500-46	rosette	1.00	30
	8 90 31 11 038 00 90	pin	4.00	2
	1 05 30 31 025 00 90	fixing set	1.00	2
	4 08 17 97 501 07	holder	1.00	2
	3 05 17 97 501 01 90	holder	1.00	2
	11 90 28 22 628 00-46	holder	1.00	30
	12 08 18 40 501 90	sleeve	1.00	2