



Neck and back massage - Chrome

ST 050 610 0985

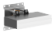






- max. flow 36 l/min at 3 bar flow pressure
- rain flow
- with anti-scale system
- suitable for xGRID (when using installation track + 12 mm recess depth)
- exposed trim parts
- concealed rough parts
- temperature setting via thermostat

	Chrome	ST 050 610 0985-00 0010
	Brushed Platinum	ST 050 610 0985-06 0010

Individual components of this set

You need the following components for this set

	6x	35 206 970 90		1x	35 531 970 90
	1x	12 380 970 90		6x	36 517 979-00
	1x	36 503 985-00		3x	36 607 985-00

Neck and back massage - Chrome

ST 050 610 0985



- female thread 1/2" connection
- dust cover
- anti-water packing
- WRAS 2106011

Neck and back massage - Chrome

ST 050 610 0985

Required miscellaneous



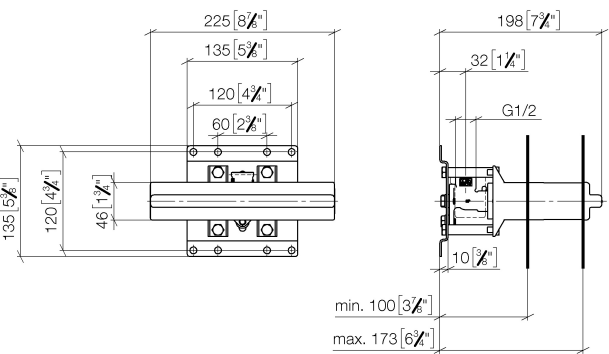
Drybox Concealed thermostat -
●Overflow is part of the scope of delivery.

XS-09 0730

Neck and back massage - Chrome

ST 050 610 0985

mm [inches]



Certificates

LGA_19 WRAS_2106



Neck and back massage - Chrome

ST 050 610 0985

Codes & Standards

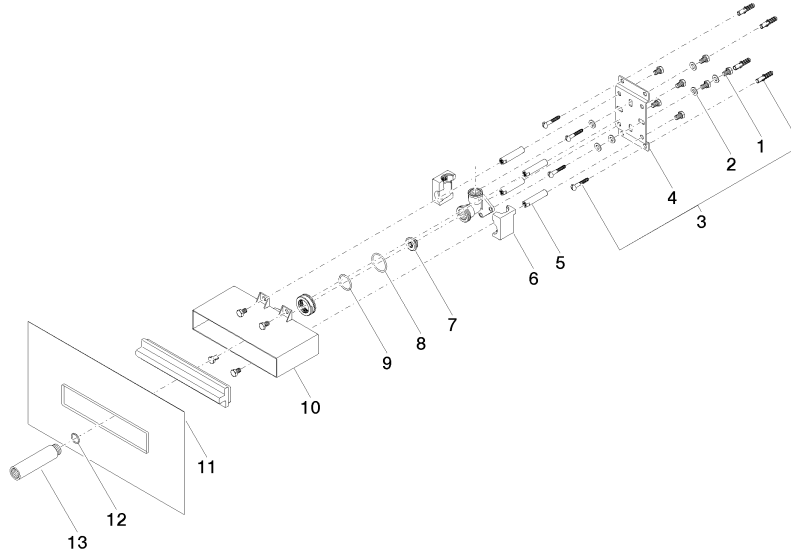
DIN 4109	ISO 3822	Scottish Water Byelaws	UK Water Supply Regulations
----------	----------	---------------------------	--------------------------------

Ü-Zeichen

Neck and back massage - Chrome

ST 050 610 0985

Product version from 3/7/2023





Neck and back massage - Chrome

ST 050 610 0985

Spare parts list

Product version from 3/7/2023

No.	Item Number	Name	Quantity used	Delivery time
	09 30 30 152 90	screw	28	2

Neck and back massage - Chrome

ST 050 610 0985



- red brass, lead-free
- 2x back flow preventer
- 2x female thread 3/4" connections
- 1x female thread 3/4" outlet for additional valves
- 3x female thread 3/4" outlet, right/left alternatively
- 4x dust cover
- 4x anti-water packing
- soundproofing
- gauge 120 mm
- suitable for xGRID (when using installation track + 12 mm recess depth)
- WRAS 2011026

Neck and back massage - Chrome

ST 050 610 0985

Recommended miscellaneous

Extension 28 mm -

12 177 970 90



Recommended miscellaneous

Extension 46 mm -

12 178 970 90



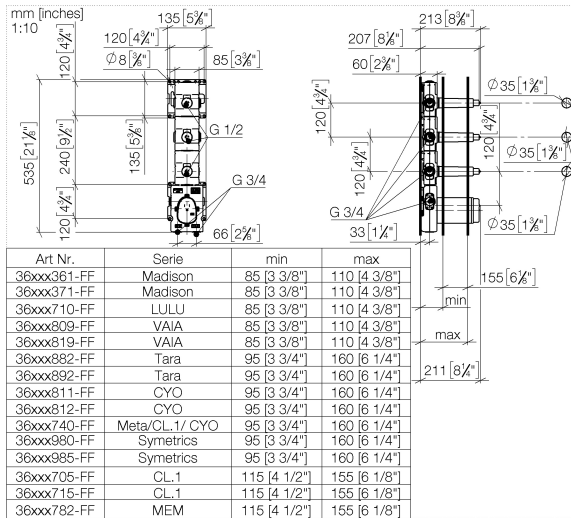
Required miscellaneous



Drybox Thermostat module with 3 valves - 39 531 970 90

Neck and back massage - Chrome

ST 050 610 0985



Certificates

ACS_21 ACC LY Belgaqua_21-031-2 DVGW_DW-6512DN0 WRAS_2011



Neck and back massage - Chrome

ST 050 610 0985

Codes & Standards

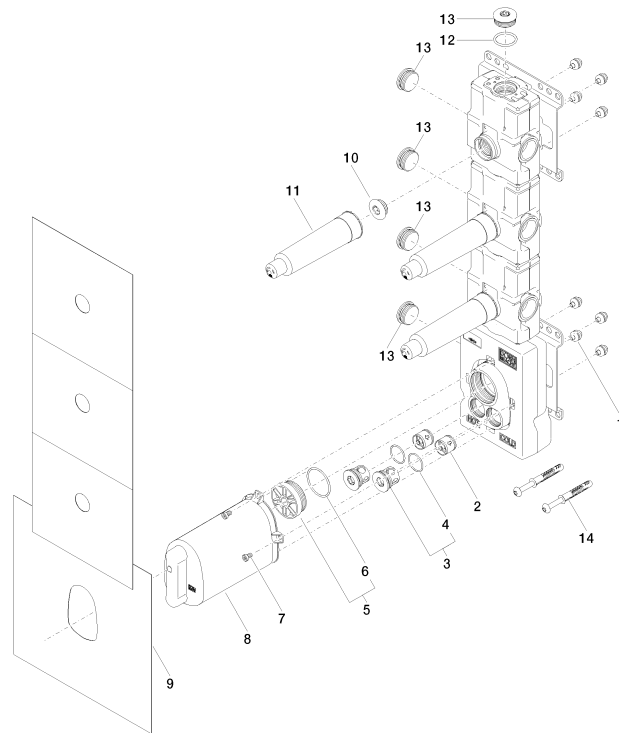
EN 1111	EN 1717	Scottish Water Byelaws	UK Water Supply Regulations
XP P 41-280			

Neck and back massage - Chrome

ST 050 610 0985

Product version up to 11/25/2021

Product version from 1/1/2022





Neck and back massage - Chrome

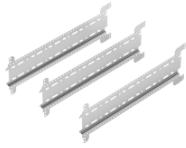
ST 050 610 0985

Spare parts list
Product version up to 11/25/2021
Product version from 1/1/2022

No.	Item Number	Name	Quantity used	Delivery time
	90 23 01 091 00 90	set	36	2

Neck and back massage - Chrome

ST 050 610 0985



Neck and back massage - Chrome

ST 050 610 0985

Neck and back massage - Chrome

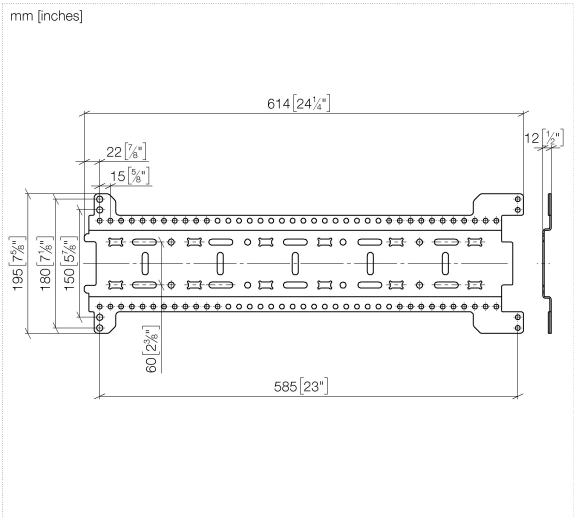
ST 050 610 0985

Neck and back massage - Chrome

ST 050 610 0985

Neck and back massage - Chrome

ST 050 610 0985

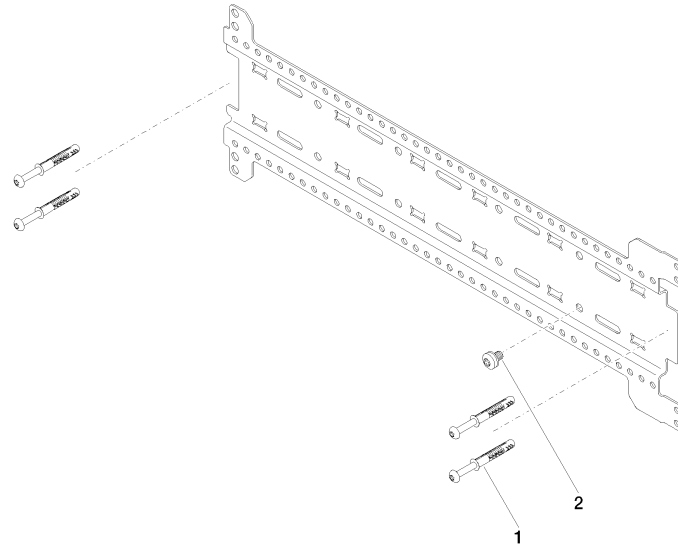


Neck and back massage - Chrome

ST 050 610 0985

Neck and back massage - Chrome

ST 050 610 0985





Neck and back massage - Chrome

ST 050 610 0985

Spare parts list

No.	Item Number	Name	Quantity used	Delivery time
	04 30 31 054 00 90	fixing set	9	2

Neck and back massage - Chrome

ST 050 610 0985



Fits: IMO, LULU, MADISON, MEM, TARA,
CL.1, LISSÉ, VAIA, META, CYO

- HORIZONTAL RAIN, max. flow rate 6 l/min (at 3 bar)
- with anti-scale system
- cover plate 240 x 60 mm
- 1/2" connection
- This product can help a building meet the requirements of Green Building Rating Systems, e.g. LEED®, BREEAM®, DGNB
- WRAS 1304001

	Chrome	36 517 979-0
	Brushed Platinum	36 517 979-0
	Platinum	36 517 979-0
	Dark Chrome	36 517 979-1
	Light Gold	36 517 979-2
	Brushed Light Gold	36 517 979-2
	Brushed Durabronze (23kt Gold)	36 517 979-2
	Matte Black	36 517 979-3
	Brushed Bronze	36 517 979-4
	Brushed Champagne (22kt Gold)	36 517 979-4
	Champagne (22kt Gold)	36 517 979-4
	Brushed Chrome	36 517 979-9
	Brushed Dark Platinum	36 517 979-9

Neck and back massage - Chrome

ST 050 610 0985

0
—
6
—
8
—
9
—
6
—
7
—
8
—
3
—
2
—
6
—
7
—
3
—
9
—

Required miscellaneous

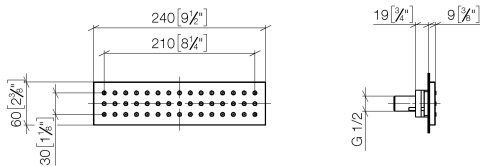


Concealed wall installation box - 35 206 970 90
●max. recess depth 173 mm
●min. recess depth 100 mm

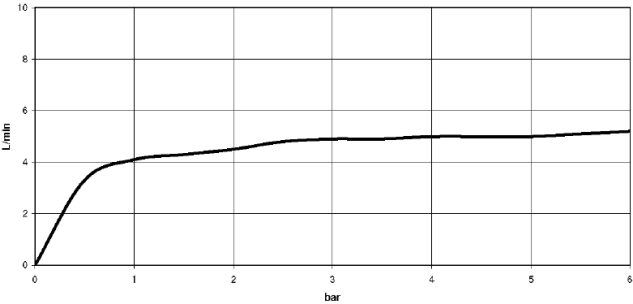
Neck and back massage - Chrome

ST 050 610 0985

mm [inches]



Flow rate chart



Certificates

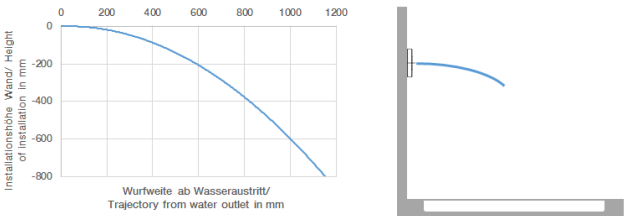
LGA_19

WRAS_1304

Neck and back massage - Chrome

ST 050 610 0985

Trajectory diagram



Codes & Standards

DIN 4109

ISO 3822

Scottish Water
Byelaws

UK Water Supply
Regulations

Ü-Zeichen

Neck and back massage - Chrome

ST 050 610 0985

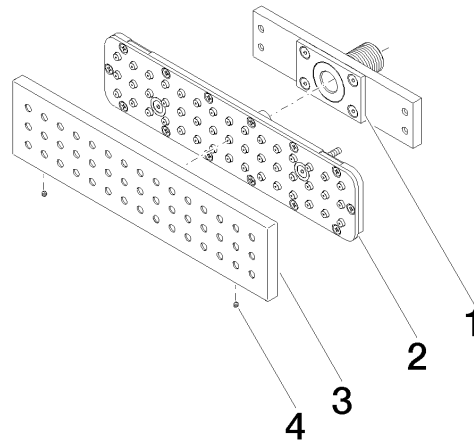
Neck and back massage - Chrome

ST 050 610 0985

Product version up to 5/15/2020

Product version from 5/15/2020 to 5/16/2020

Product version from 5/16/2020





Neck and back massage - Chrome

ST 050 610 0985

Spare parts list

Product version up to 5/15/2020

Product version from 5/15/2020 to 5/16/2020

Product version from 5/16/2020

No.	Item Number	Name	Quantity used	Delivery time
	90 11 02 137 00 90	connection	4	2









Neck and back massage - Chrome

ST 050 610 0985

Error: Subreport could not be shown.



- rosette 60 x 60 mm
- head part with cut-to-length spindle and sleeve
- WRAS 2011026, 2010066


	Chrome	36 607 985-0
	Brushed Platinum	36 607 985-0
	Platinum	36 607 985-0
	Dark Chrome	36 607 985-1
	Brushed Light Gold	36 607 985-2
	Brushed Durabronze (23kt Gold)	36 607 985-2
	Brushed Chrome	36 607 985-9
	Brushed Dark Platinum	36 607 985-9

Neck and back massage - Chrome

ST 050 610 0985

10
—
16
—
18
—
9
—
17
—
18
—
13
—
19
—

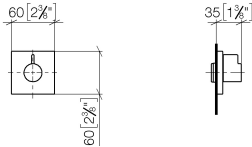
Required miscellaneous

	Wall valve 1/2" - <ul style="list-style-type: none">•max. recess depth 145 mm•min. recess depth 75 mm	35 607 970 90
---	---	---------------

Neck and back massage - Chrome

ST 050 610 0985

mm [inches]



Certificates

IAPMO_4976	DVGW_DW-6501DN0	WRAS_2010	LGA_29	LGA_29
DVGW_DW-6512DN0	WRAS_2011			

Neck and back massage - Chrome

ST 050 610 0985

Codes & Standards

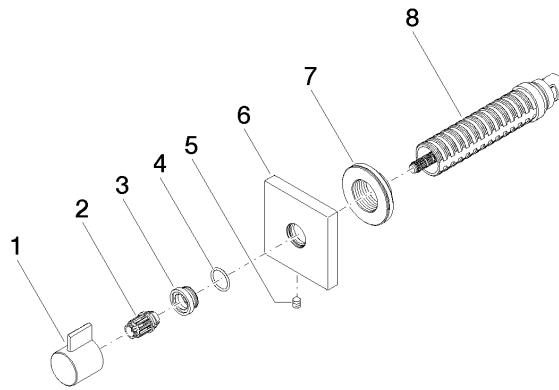
ASME A112.18.1	cUPC	DIN 4109	EN 1111
EN 200	ISO 3822	Scottish Water Byelaws	UK Water Supply Regulations

Ü-Zeichen

Neck and back massage - Chrome

ST 050 610 0985

Product version from 6/1/2024





Neck and back massage - Chrome

ST 050 610 0985

Spare parts list

Product version from 6/1/2024

No.	Item Number	Name	Quantity used	Delivery time
	09 20 98 002-00	handle	8	10