




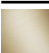


**CL.1 Deck-mounted basin spout without pop-up waste - Chrome**

CL.1

13 714 705

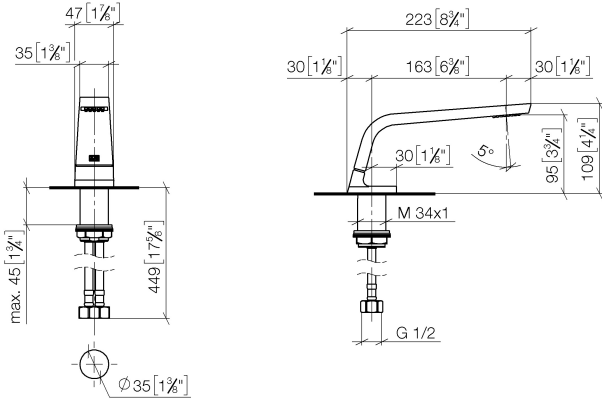


- 160mm projection
- fixed spout
- rectangular spray pattern with 40 individual jets
- height of mixer 108 mm
- height up to aerator 94 mm
- hole diameter 35 mm
- 2x screw-in M 10 x 1 pressure hose, leak-tested
- 1/2" connection
- max. flow 4 l/min
- lead-free
- This product can help a building meet the requirements of Green Building Rating Systems, e.g. LEED®, BREEAM®, DGNB
- WRAS 1512011

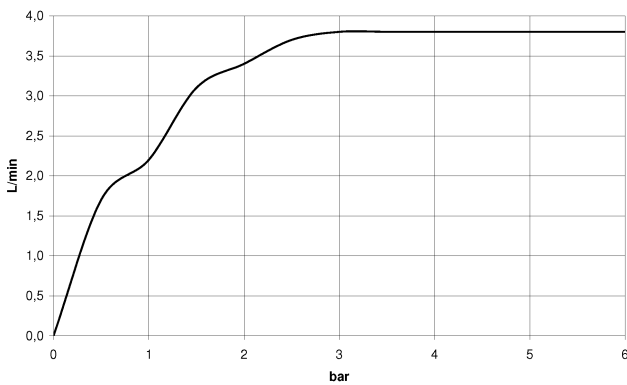
|  |                               |               |
|--|-------------------------------|---------------|
|  | Chrome                        | 13 714 705-00 |
|  | Brushed Platinum              | 13 714 705-06 |
|  | Dark Chrome                   | 13 714 705-19 |
|  | Brushed Champagne (22kt Gold) | 13 714 705-46 |
|  | Champagne (22kt Gold)         | 13 714 705-47 |
|  | Brushed Dark Platinum         | 13 714 705-99 |

13 714 705


mm [inches]



**Flow rate chart**



**Codes & Standards**

|                          |                             |           |  |
|--------------------------|-----------------------------|-----------|--|
| ASME A112.18.1           | cUPC                        | DIN 4109  | EPA WaterSense   |
| Executive Order no. 1007 | ISO 3822                    | NSF372    | NSF61  |
| Scottish Water Byelaws   | UK Water Supply Regulations | Ü-Zeichen | WaterSense  |



CL.1 Deck-mounted basin spout without pop-up waste - Chrome

CL.1

13 714 705

Certificates

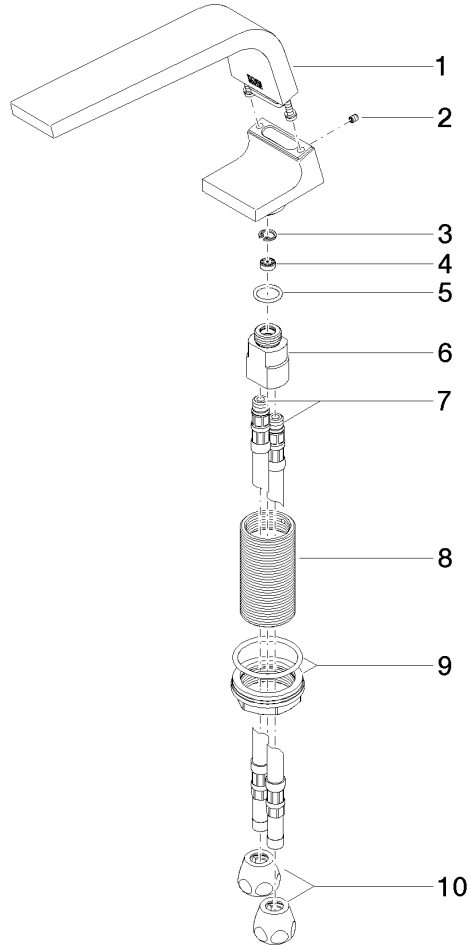
---

|            |           |           |            |         |
|------------|-----------|-----------|------------|---------|
| LGA_28     | GDV_0400  | IAPMO_N-4 | IAPMO_8834 | IAPMO_6 |
| IAPMO_4976 | WRAS_1512 |           |            |         |

13 714 705

Product version from 6/15/2021

**Product version from 7/1/2021 to 6/15/2021**





## CL.1 Deck-mounted basin spout without pop-up waste - Chrome

CL.1

13 714 705

### Spare parts list

Product version from 6/15/2021

#### **Product version from 7/1/2021 to 6/15/2021**

| No. | Item Number        | Name  | Quantity used | Delivery time |
|-----|--------------------|-------|---------------|---------------|
|     | 90 11 70 002 00-00 | spout | 12            | 10            |