



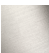
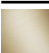


**CL.1 Deck-mounted basin spout without pop-up waste - Dark Chrome**

CL.1

13 715 705

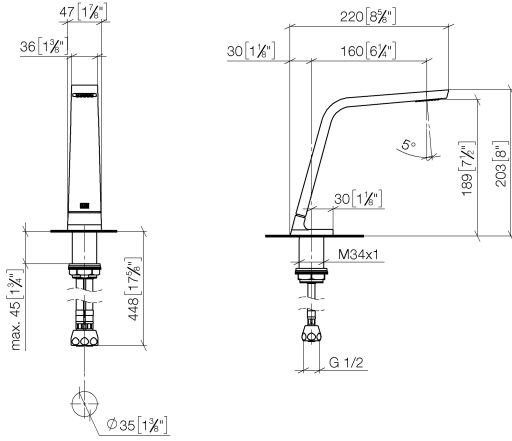


- 160mm projection
- fixed spout
- rectangular spray pattern with 40 individual jets
- height of mixer 204 mm
- height up to aerator 190 mm
- hole diameter 35 mm
- 2x screw-in M 10 x 1 pressure hose, leak-tested
- 1/2" connection
- max. flow 4 l/min
- lead-free
- This product can help a building meet the requirements of Green Building Rating Systems, e.g. LEED®, BREEAM®, DGNB
- WRAS 1512011

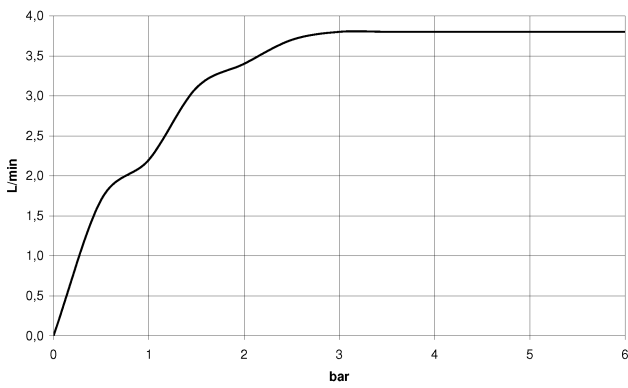
	Dark Chrome	13 715 705-19
	Chrome	13 715 705-00
	Brushed Platinum	13 715 705-06
	Brushed Champagne (22kt Gold)	13 715 705-46
	Champagne (22kt Gold)	13 715 705-47
	Brushed Dark Platinum	13 715 705-99

13 715 705

mm [inches]



**Flow rate chart**



**Codes & Standards**

Executive Order  
no. 1007

NSF372

NSF61



CL.1 Deck-mounted basin spout without pop-up waste - Dark Chrome

---

CL.1

13 715 705

Certificates

---

GDV\_0400

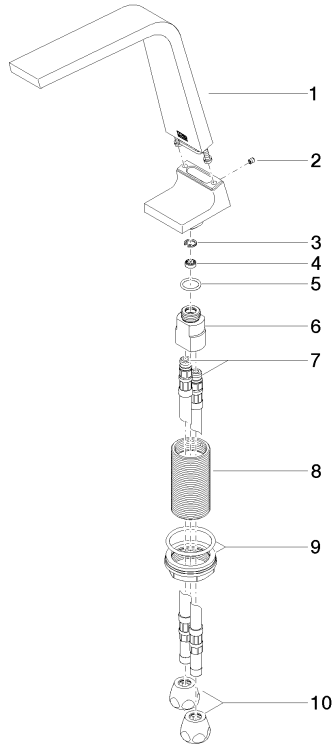
IAPMO\_N-4

IAPMO\_6

13 715 705

**Product version from 7/1/2021**

Parts for other finishes can be found here: [Chrome](#)





## CL.1 Deck-mounted basin spout without pop-up waste - Dark Chrome

---

CL.1

13 715 705

### **Spare parts list**

**Product version from 7/1/2021**