



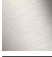


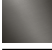
**CL.1 Bath spout for wall mounting - Brushed Champagne (22kt Gold)**

CL.1

13 801 705    Product version from 3/9/2015



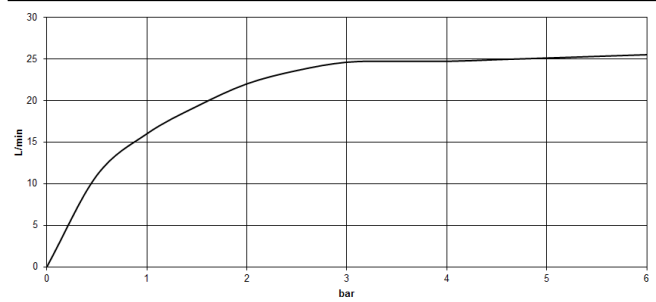
- 205mm projection
- rectangular spray pattern with 55 individual jets
- hole diameter 37 mm
- 1/2" connection
- plug-link mounting
- max. flow 24.6 l/min at 3 bar flow pressure
- WRAS

	Brushed Champagne (22kt Gold)	13 801 705-46
	Chrome	13 801 705-00
	Brushed Platinum	13 801 705-06
	Dark Chrome	13 801 705-19
	Champagne (22kt Gold)	13 801 705-47
	Brushed Dark Platinum	13 801 705-99

mm [inches]



**Flow rate chart**



**Codes & Standards**

ASME A112.18.1	cUPC	DIN 4109	ISO 3822
----------------	------	----------	----------

**Ü-Zeichen**



## CL.1 Bath spout for wall mounting - Brushed Champagne (22kt Gold)

---

CL.1

13 801 705 Product version from 3/9/2015

### Certificates and sustainability

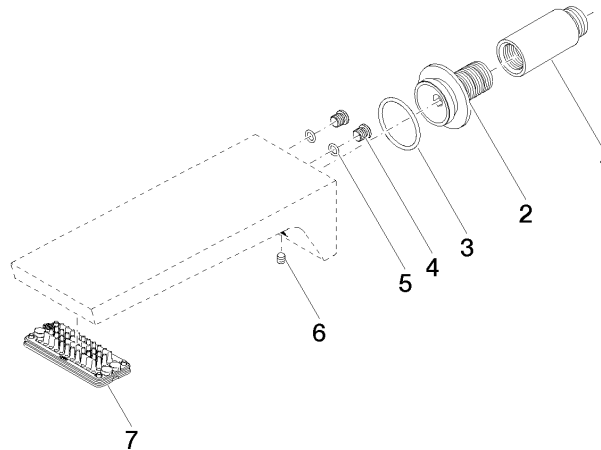
---

IAPMO\_4976

LGA\_28

13 801 705 Product version from 3/9/2015

Parts for other  
finishes can be found  
here: [Chrome](#)



## Spare parts list

No.	Item Number	Name	Quantity used	Delivery time
7	90 11 02 299 00 90	aerator	1.00	2
3	09 14 10 119 90	seal	1.00	2
5	09 14 10 132 90	seal	2.00	2
2	09 24 03 180 90	nipple	1.00	2
1	09 24 03 081 10 90	extension	1.00	2
4	09 31 20 027 10-00	plug	2.00	10
6	90 31 11 004 00 90	pin	1.00	2