







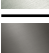
LISSÉ Bath spout for wall mounting - Chrome

LISSÉ

13 801 845



- 210mm projection
- circular normal flow
- hole diameter 37 mm
- 1/2" connection
- plug-link mounting
- max. flow 21.5 l/min at 3 bar flow pressure
- WRAS 2207003

| | | |
|--|-----------------------|---------------|
|  | Chrome | 13 801 845-00 |
|  | Brushed Platinum | 13 801 845-06 |
|  | Dark Chrome | 13 801 845-19 |
|  | Brushed Light Gold | 13 801 845-27 |
|  | Matte Black | 13 801 845-33 |
|  | Brushed Chrome | 13 801 845-93 |
|  | Brushed Dark Platinum | 13 801 845-99 |

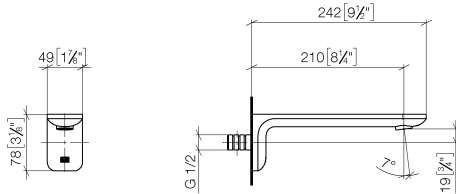
Recommended miscellaneous



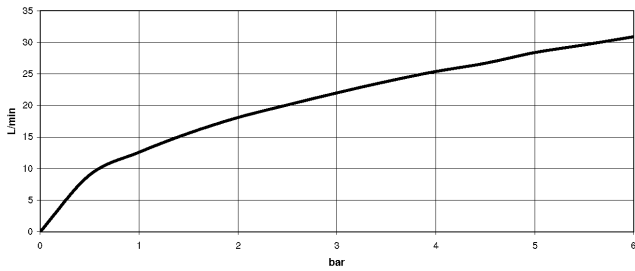
- Concealed wall elbow -** 35 085 970 90
- max. recess depth 163 mm
 - min. recess depth 90 mm

13 801 845

mm [inches]



Flow rate chart



Codes & Standards

ASME A112.18.1

cUPC

DIN 4109

ISO 3822

Scottish Water
Byelaws

UK Water Supply
Regulations

Ü-Zeichen



LISSÉ Bath spout for wall mounting - Chrome

LISSÉ

13 801 845

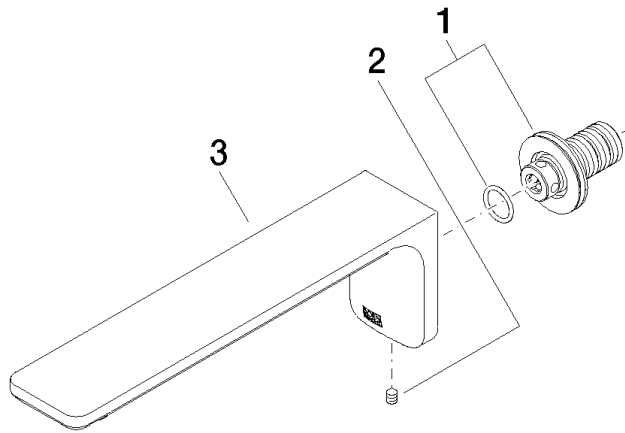
Certificates

LGA_29

IAPMO_4976

WRAS_2207

Product version from 3/9/2016





LISSÉ Bath spout for wall mounting - Chrome

LISSÉ

13 801 845

Spare parts list

Product version from 3/9/2016

| No. | Item Number | Name | Quantity used | Delivery time |
|-----|--------------------|------------|---------------|---------------|
| | 90 24 03 108 00 90 | nipple set | 3 | 2 |