

**TARA Bath spout for wall mounting - Platinum**

TARA

13 801 892



- 200mm projection
- circular normal flow
- rosette Ø 55 mm
- hole diameter 37 mm
- 1/2" connection
- max. flow 29 l/min at 3 bar flow pressure
- WRAS 1811020

	Platinum	13 801 892-08
	Chrome	13 801 892-00
	Brushed Platinum	13 801 892-06
	Dark Chrome	13 801 892-19
	Brushed Durabronze (23kt Gold)	13 801 892-28
	Matte Black	13 801 892-33
	Brushed Bronze	13 801 892-42
	Brushed Champagne (22kt Gold)	13 801 892-46
	Champagne (22kt Gold)	13 801 892-47
	Brushed Chrome	13 801 892-93
	Brushed Dark Platinum	13 801 892-99

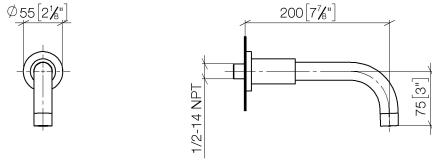
**Recommended miscellaneous**



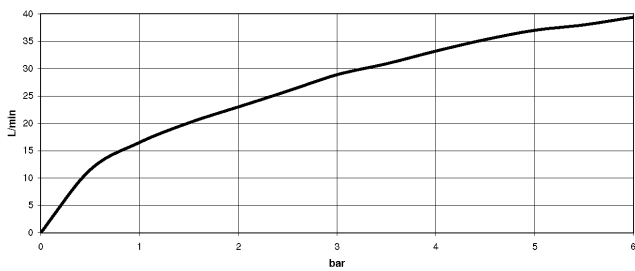
- Concealed wall elbow -** 35 085 970 90
- max. recess depth 163 mm
  - min. recess depth 90 mm

13 801 892

mm [inches]



Flow rate chart



Codes & Standards

ASME A112.18.1

cUPC

DIN 4109

ISO 3822

Scottish Water  
Byelaws

UK Water Supply  
Regulations

Ü-Zeichen



## TARA Bath spout for wall mounting - Platinum

---

TARA

13 801 892

### Certificates

---

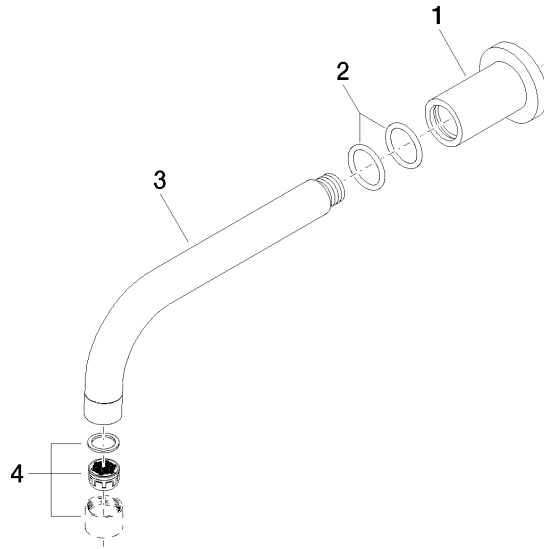
WRAS\_1811

LGA\_18

IAPMO\_4976

WRAS\_240602

**Product version from 4/1/2024**





# TARA Bath spout for wall mounting - Platinum

TARA

13 801 892

## Spare parts list

### Product version from 4/1/2024

No.	Item Number	Name	Quantity used	Delivery time
	09 27 89 009-08	rosette	5	40