

MADISON Three-hole basin mixer with pop-up waste - Platinum



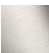



MADISON

20 700 360



- 135mm projection
- fixed spout
- circular, air-enriched flow
- height of mixer 72 mm
- height up to aerator 40 mm
- hole diameter valve 32 mm
- hole diameter spout 35 mm
- without rosette
- 2x 1/2" x 1/2" high pressure hose
- max. flow 7 l/min
- lead-free
- This product can help a building meet the requirements of Green Building Rating Systems, e.g. LEED®, BREEAM®, DGNB
- WRAS 1512009

Only suitable for basins with an overflow.

| | | |
|--|-------------------------------|---------------|
|  | Platinum | 20 700 360-08 |
|  | Chrome | 20 700 360-00 |
|  | Brushed Platinum | 20 700 360-06 |
|  | Durabress (23kt Gold) | 20 700 360-09 |
|  | Brushed Durabress (23kt Gold) | 20 700 360-28 |
|  | Brushed Dark Platinum | 20 700 360-99 |

Recommended miscellaneous

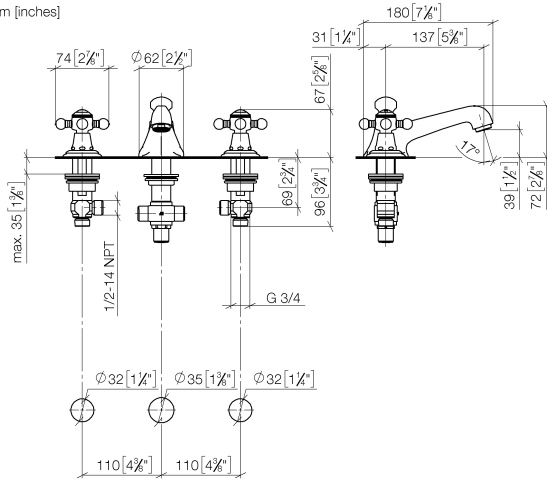


- High pressure hoses -**
- 2x 3/8" x 1/2" x 500mm high pressure hose

12 506 970 90

20 700 360

mm [inches]



Flow rate chart



Codes & Standards

DIN 4109

EN 200

Executive Order
no. 1007

ISO 3822

Scottish Water
Byelaws

UK Water Supply
Regulations

Ü-Zeichen

VA-Zeichen



MADISON Three-hole basin mixer with pop-up waste - Platinum

MADISON

20 700 360

Certificates

ETA_17

WRAS_1512

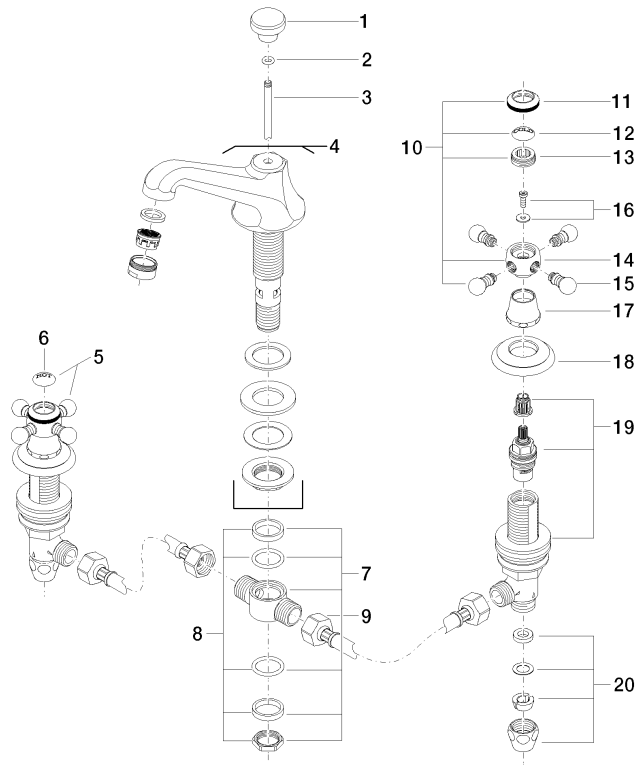
GDV_0400

LGA_8

WRAS_240602

20 700 360

Product version from 7/31/2009



21 ————— Ablaufgarnitur 04.11.01.001.00.FF



MADISON Three-hole basin mixer with pop-up waste - Platinum

MADISON

20 700 360

Spare parts list

Product version from 7/31/2009

| No. | Item Number | Name | Quantity used | Delivery time |
|-----|-----------------|--------|---------------|---------------|
| | 09 20 36 030-08 | handle | 37 | 40 |