

MADISON Bath mixer for wall mounting with hand shower set - Chrome

MADISON


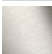
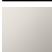



25 023 360



- 160mm projection
- Hand shower: COMPACT RAIN, max. flow rate 9 l/min (at 3 bar)
- spout: rectangular normal flow
- wall bracket
- rotary diverter for bath/shower
- rosette Ø 70 mm
- 1/2" connection
- gauge 153 mm
- metal shower hose 1250mm with integrated anti-twist protection
- max. spout flow rate 26 l/min
- WRAS

**Intrinsic protection against back flow.**

Intrinsic protection against back flow.

	Chrome	25 023 360-00
	Brushed Platinum	25 023 360-06
	Platinum	25 023 360-08
	Durabrand (23kt Gold)	25 023 360-09
	Brushed Durabrand (23kt Gold)	25 023 360-28
	Brushed Dark Platinum	25 023 360-99

Required miscellaneous



**Single holder for 15 mm PEX pipes -**
29 022 970 90

•for 15 mm PEX pipes

Required miscellaneous



**Single holder for 16 mm AluPEX pipes -**
29 021 970 90

•for 16 mm AluPEX pipes

Required miscellaneous

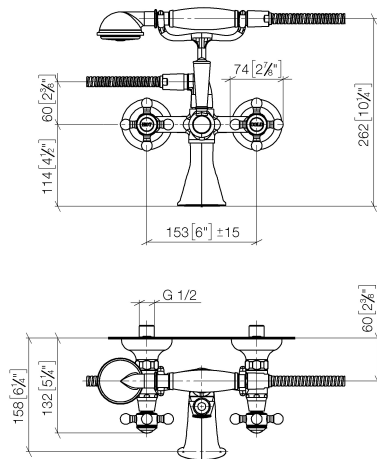


**Single holder for 12 mm and 15 mm copper pipes -**
29 020 970 90

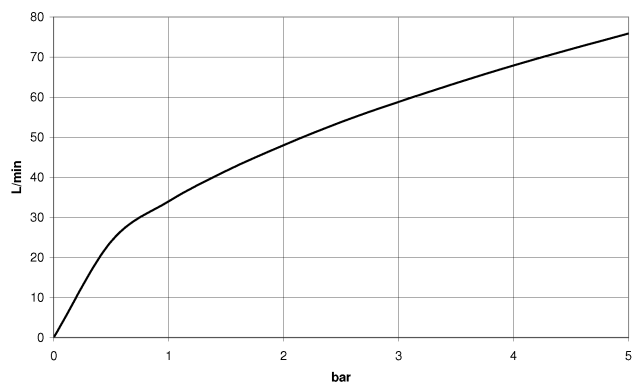
•for 12 mm and 15 mm copper pipes

25 023 360

mm [inches]



### Flow rate chart



### Codes & Standards

EN 1717

Scottish Water  
Byelaws

UK Water Supply  
Regulations



## MADISON Bath mixer for wall mounting with hand shower set - Chrome

---

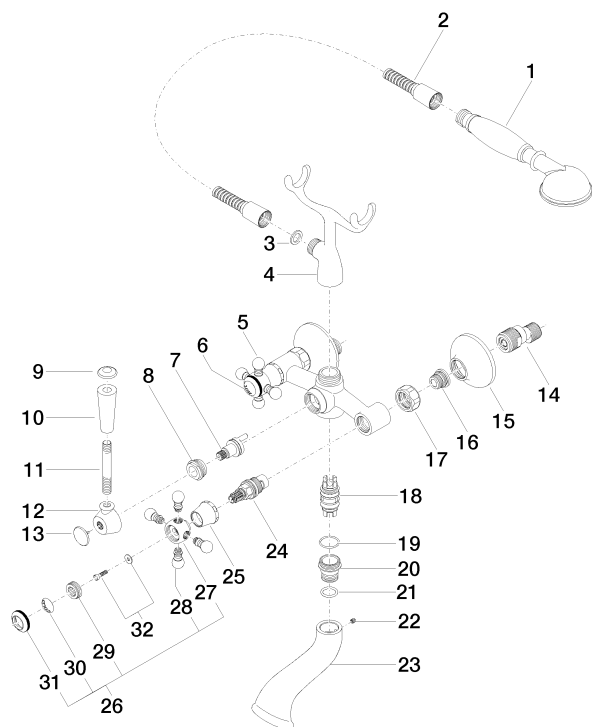
MADISON

25 023 360

Certificates and sustainability

---

Belgaqua\_21-378-2 WRAS\_240702



25 023 360

## Spare parts list

No.	Item Number	Name	Quantity used	Delivery time
12	09 18 20 011-00	base	1.00	10
29	09 20 83 006 90	handle	2.00	2
23	09 11 06 033 20-00	spout	1.00	10
1	28 002 970-00	MADISON Metal hand shower with porcelain insert (white) - Chrome	1.00	10
9	09 30 30 062-00	screw	1.00	10
2	28 104 970-00	Metal shower hose 1/2" x 1/2" x 1250 mm - Chrome	1.00	2
6	09 26 01 011 90	accessories	1.00	2
4	04 17 20 010 00-00	holder	1.00	10
30	09 26 01 010 90	accessories	1.00	2
20	09 24 03 123 20 90	nipple	1.00	2
26	04 20 36 002 06-00	handle ( cold )	1.00	10
31	09 20 36 005-00	handle	2.00	10
5	04 20 36 002 07-00	handle ( hot )	1.00	10
11	09 28 22 013 90	pipe	1.00	2
10	11 170 370-00	MADISON Lever insert - Chrome	1.00	10
32	04 30 30 029 00 90	fixing set	2.00	2
24	90 90 03 131 00 90	top	2.00	2
27	09 20 36 002-00	handle	2.00	10
14	04 11 04 030 00 90	connection	2.00	2
13	09 30 30 064-00	screw	1.00	10
21	09 14 10 022 90	seal	1.00	2
25	09 21 02 055-00	cover	2.00	10
17	09 23 30 010-00	nut	2.00	10
15	09 27 39 010-00	rosette	2.00	10
8	09 23 10 007 90	nut	1.00	2
28	09 20 36 004-00	handle	8.00	10
16	04 29 05 014 00 90	nipple	2.00	2
19	90 14 10 056 00 90	seal	1.00	2
18	90 21 10 010 00 90	insert	1.00	2
3	90 14 20 002 00 90	seal	1.00	2
7	90 15 01 001 00 90	diverter	1.00	2
22	90 31 11 030 00 90	pin	1.00	2